

Melodic Engagement: Unveiling Interactions Dynamics in Deaf Content on Tiktok with @jennifernatalie_

Santi Setyaningsih¹ Prahastiwi Utari² Ign. Agung Satyawan³

¹Master of Communication Science Program, Sebelas Maret University Surakarta

²Master of Communication Science Program, Sebelas Maret University Surakarta

³Master of Communication Science Program, Sebelas Maret University Surakarta

Article Info

Article history:

Received Sept 12th, 2016

Accepted Nov 26th, 2017

Published Jan 15th, 2017

Keyword:

Keywords: Interpersonal Communication, Engagement, Deaf content analysis, social media influencers, and TikTok.

Abstract

Social media has evolved into an inclusive communication instrument, enabling individuals with disabilities to distribute various messages to the general public. The @jennifernatalie account is among the Social Media Influencers (SMIs) for deaf people who disseminate diverse sign language-related educational content via the TikTok social media platform. Despite experiencing challenges with verbal communication, @jennifernatalie_ manages to cultivate a respectable level of engagement with her followers. This study aims to assess the effectiveness of @jennifernatalie_'s sign language instructional material in fostering engagement among her followers along five dimensions that facilitate engagement in the conducted communication. SMI. This study makes use of qualitative content analysis as its methodology. Analyzing brief video content on TikTok (as curated by Jennifernatalie) provided the data for this study, which was supplemented by literature reviews from various sources pertinent to the subject. The research findings indicate that by incorporating five dimensions of SMI communication into her educational content on TikTok, @jennifernatalie was able to generate engagement. @jennifernatalie_ provides frequently applicable guidance on communicating with impaired individuals via sign language. In the interim, Jennifer Natalie responded to a range of comments left by her followers as a means of engaging in conversation. It is not unusual for Jennifer Natalie to express a wide range of emotions via her content. Additionally, @jennifernatalie_ content is a source of encouragement and invitations for a broad audience. Additionally, Jennifer Natalie stated that she is an integral part of society. The results of this study indicate that disability does not impede SMI's ability to generate engagement; instead, it must be supplemented with the capacity to create engaging content.

Copyright © 2018 Interaksi: Jurnal Ilmu Komunikasi. All rights reserved.

Corresponding Author: Santi Setyaningsih

Master of Communication Science Program, Sebelas Maret University, Indonesia

Jl. Ir. Sutami No. 36, Kentingan, Jebres, Surakarta

Email: santisetyaningsih@student.uns.ac.id

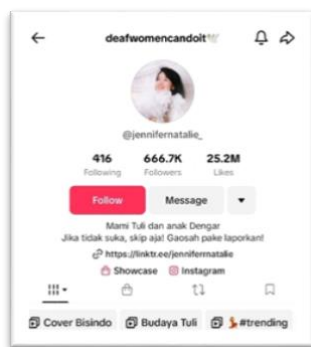
Introduction

Serving as a medium of communication, social media platforms can facilitate the dissemination of diverse forms of educational content to their users. According to data from Gitnux (2023), approximately 1.25 billion monthly users utilize Facebook to access academic content. A separate survey of one thousand students from various countries conducted by Intelligent (2023) revealed that 51% of students used TikTok as a resource to aid in completing their academic assignments. Social media platforms host a wealth of educational content that transcends the confines of the academic sphere. However, its reach extends to health education (Bintang et al., 2022), financial literacy (Hidayat et al., 2023), and digital literacy (Rahardaya & Irwansyah, 2021). Social media platforms have the potential to serve as a valuable educational tool due to their provision of visual content and diverse study materials (Sharma & Sharma, 2021). Diverse entities must optimize social media's pedagogical capacity to ensure that media audiences efficiently acquire valuable information quickly.

Any user can disseminate educational content across social media platforms, including social media influencers (SMI). Hartina (2023) examines how Instagram influencers Victoria and Riya Agrawal disseminate knowledge regarding vitiligo disease, employing three distinct categories of content: information dissemination, emotional support, and experience sharing. In contrast, the Instagram account of influencer @dr.tirta frequently disseminates diverse forms of educational content on healthy lifestyles, including guidance on exercise and dietary selection (Bintang et al., 2022). It is believed that the audience can understand the importance of leading a healthy lifestyle through the education offered by @dr.tirta (Bintang et al., 2022). In order to aid government programs in managing the COVID-19 pandemic, influencers including @rachelvennya, @awkarin, @dr.tirta, and @dr.erche_idrus disseminated information regarding personal hygiene and social distancing (Annisa et al., 2021). Based on this evidence, SMI must also disseminate educational and product endorsement content to the public.

The content they share on social media is regarded as a means by which social media influencers (SMI) can inform and raise the consciousness of their audiences regarding a particular issue. SMI can execute effective health education campaigns by utilizing easily shareable content on social media platforms (Kostygina et al., 2020). In the meantime, according to the findings of Okuah et al. (2019), SMI's social media opinions may contribute to the education of pro-environmental behavior and consciousness. Financial sector influencers (influencers) can educate Generation Z on consumption patterns and financial literacy through the TikTok social media platform, employing the hashtag #investing (Zhou et al., 2023). Additionally, Chee et al. (2023) explained that SMI, associated with parenthood and family, can provide young mothers with education and motivation regarding childrearing. The function of SMI is deemed essential for disseminating information regarding various topics that the mainstream media have yet to cover extensively.

The communication conducted by SMI is regarded as an efficacious method of transmitting a message due to its capacity to generate interaction with media audiences. The concept of engagement in the context of social media encompasses any form of communication or interaction on these networking sites. This includes responses to tweets, retweets, likes, and replies on Twitter, as well as reactions to shares, comments, impressions, hashtags, and more (Wisessathorn et al., 2022). Social media engagement can influence the audience's cognitive and affective faculties in a way that motivates them to undertake specific actions (Gross & von Wangenheim, 2022). Ngai et al. (2020) also described how SMI-generated engagement can generate social connections between SMI and its audiences and elicit emotional responses—engagement results from SMI and media audiences engaging in two-way communication (Ngai et al., 2020). Ultimately, SMI must be capable of developing communication patterns that facilitate interaction between the organization and its social media audiences.



Picture 1. Profil TikTok @ jennifernatalie_
Source: jennifernatalie_ (2024)

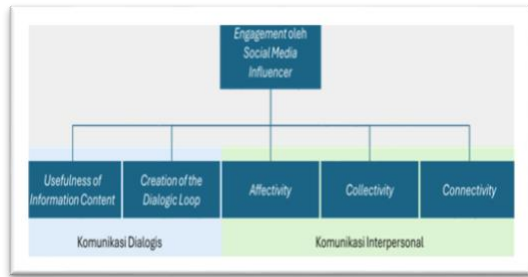
Picture 1 Profil Tiktik @jennifernatalie_ is a social media user whose TikTok account frequently shares informative content concerning deaf-related topics, including sign language, cultural practices, and conventions. According to Jennifer (2020), the account amassed an estimated 666,000 followers and 25 million likes as of March 22nd, 2024. According to the SMI classification proposed by Ruiz-Gomez (2019), @jennifernatalie falls within the MacroInfluencers category due to its substantial follower base, which ranges from 500,000 to 1,000,000. Regarding the nature of her notoriety, @jennifernatalie_ can be categorized as a social media celebrity whose TikTok content garners more audience interest than her mainstream media recognition. To achieve social media celebrity status, an SMI must possess the capacity to generate engaging and innovative digital content.

When disseminating knowledge regarding aural disabilities, @jennifernatalie_ frequently presents a variety of disability-related content. According to the data presented in Figure 1, the account organizes its content into segments that correspond to specific themes, including sign language communication education, deaf culture, and motivation for deaf individuals (Jennifernatalie, 2024). Additionally, numerous content formats were developed. Dancing content, sign language practice, and interaction with those closest to you are some examples (jennifernatalie2024). Jennifer Natalie, an authoritative figure in content creation, was invited to deliver a presentation at the Inclusive Party event (Inclusive Indonesia Connection, 2023). This initially indicates that @jennifernatalie_ is capable of

creatively and effectively creating and managing social media content.

The utilization of social media content is a critical component in SMI's efforts to engage and communicate with media audiences. In regards to attaining social media celebrity status, @jennifernatalie_'s notoriety is primarily predicated on the ingenuity of the content she produces; thus, her content must engage the audience and attract attention to the greatest extent possible (Ruiz-Gomez, 2019). Jennifer Natalie is a content creator for SMI. To maintain SMI's reputation in the field of auditory disabilities, she must consistently incorporate a social identity into each of her pieces of content (Ruiz-Gomez, 2019). SMI can increase constituent participation in voicing an issue by developing straightforward content to distribute on social media (Kostygina et al., 2020). According to Okuah et al. (2019), content curation capabilities are essential for SMI to facilitate the management of content that pertains to a specific theme—given the significance of content in the SMI communication process, examining how the content produced by @jennifernatalie_ can fosters social media engagement is imperative.

The @jennifernatalie_ account is distinctive in this instance due to the fact that its proprietor is deaf and, therefore, has difficulty communicating orally. The user's deafness is additionally acknowledged in the biography section of her TikTok profile by the notation MamaTuli (jennifernatalie_, 2024). This presents an inherent difficulty for Jennifer Natalie, as she needs to effectively communicate verbally and occasionally resorts to sign language, which may only be comprehensible to specific audiences. According to the SMI engagement framework developed by Ngai et al. (2020), effective engagement on social media requires influencers to possess strong interpersonal and two-way communication abilities. However, upon initial examination, @jennifernatalie_ appears to have a comparatively high level of social media engagement, as evidenced by a sign language instructional video that garnered as much as 16.1 million views (jennifernatalie_, 2024). The inconsistency between the communication capabilities of SMI and @jennifernatalie's interaction with audiences on social media platforms is an intriguing contradiction.



Picture 2. Engagement framework by SMI
Source: Ngai et al. (2020)

Literature Review

Further analysis is warranted regarding the capacity of @jennifernatalie to generate engagement via TikTok content, given her status as a deaf SMI. Ngai et al. (2020) posit that engagement resulting from SMI necessitates the application of two theoretical frameworks: interpersonal communication and dialogical communication. Figure 2 illustrates the dimensions that SMI should possess to stimulate engagement effectively. Ngai et al. (2020) postulate that social media engagement results from establishing relationships between influencers and their audiences in which reciprocal communication is done to the greatest extent possible. Five dimensions are required to generate engagement according to this framework: the utility of the information content, establishing a dialogic loop, affectivity, collectivity, and connectivity. The

conceptualization of each dimension is displayed in Table 1. This framework will be utilized to assess the extent to which the social media content of @jennifernatalie_can satisfy the requirements for generating engagement.

Theoretical Framework

Theoretical background contains previous theories as the basis of research and the temporary hypothesis. The theory can be in the form of scientific articles, articles in journals, textbooks, or other sources of scientific writing. This theory will be used to provide state of the art of your manuscript from research problems that have been proposed. The theory that should be used primarily is the theory related to communications. Other theories that are still needed to solve the problem of research to support theories that are delivered after the theory of communication is discussed.

Table 1. Dimensional conceptualization for social media engagement construction

No.	Dimensional	Conceptualization
1	Usefulness of Information Content	Publicly disseminating beneficial information to facilitate the exchange of ideas and perspectives.
2	Creation of the Dialogic Loop	By utilizing SMI, attendees are able to submit inquiries and remarks.
3	Affectivity	Communicating personal sentiments, humor, and emotional expressions through SMI content to foster relationships.
4	Collectivity	Implementing interactive techniques such as quoting other users' posts, posing queries to the audience, or offering commendation to the audience.
5	Connectivity	A communication strategy that fosters a sense of interconnectedness with the outside world in order to establish a rapport with the community.

Source: Ngai et al. (2020)

Dialogic communication is one of the theories incorporated into the model. According to Ngai et al. (2020), the crucial element in establishing discourse is information that is informative and engaging for the audience. Helpful information is

regarded as such within the domain of social media if it motivates an individual to share, like, or comment (Ngai et al., 2020). In the meantime, Pang et al. (2018) assert that social media-mediated communication can still foster intimacy through the transmission of texts. On

social media, dialectical communication can still occur. The fundamental concept underlying dialogical communication in fostering engagement is that SMI remains receptive to messages transmitted by media audiences.

The framework of Ngai et al. (2020), interpersonal communication theory attempts to analyze establishing rapport between an SMI and his audience. Interpersonal communication is an integral component of interpersonal relationships, serving the dual purpose of fostering and sustaining connections and comprehending the emotions of each individual (Ngai et al., 2020). Despite being regarded as having certain drawbacks compared to in-person communication, social media remains a viable means of fostering relationships by utilizing digital information at one's disposal (Candrasari, 2020). According to Neubaum and Kramer (2017), disseminating social media content can be considered a type of mass interpersonal communication. By leveraging the principles of interpersonal communication theory, SMI should strive to establish meaningful connections with its social media audiences through its content.

This study examines the effectiveness of the educational content promoted by the TikTok account @jennifernatalie_ in cultivating audience engagement with deaf disabilities. Although Jennifernatalie has verbal communication limitations due to her status as an SMI, her engagement on social media is significant. This research will concentrate on the engagement-building potential of the content produced by @jennifernatalie_, given that this account is regarded capable of generating engaging and practical material. This research will answer the question: How does SMI @jennifernatalie_s content engage the audience while educating deaf individuals?

Material and Methodology

A content analysis methodology and a qualitative descriptive approach are utilized in this study. The investigation detailed in this study employs this methodology to analyze using a narrative that depicts actuality (Neuman, 2013). A qualitative approach to content analysis is a method of data analysis that seeks to discern the overt and hidden

components of a text or communication's content by considering hermeneutical traditions to decipher its message (Kassem, 2023). Regarding the approach to content analysis, this study will employ deductive/directed social analysis (directed content analysis) to interpret media content to derive a comprehensive meaning consistent with the research framework (Monggillo, 2020).

In addition to pertinent literature studies, the primary research data source was obtained from the TikTok account page @jennifernatalie_. This approach offered a more comprehensive understanding of social media communication for individuals with visual impairments. The content under analysis comprises material featured on the Sign Language, Education, Deaf Culture, and Bisindo Covers playlists. On March 23, 2024, the four playlists comprise a mere 189 videos. The present study was conducted from March 18 to March 26, 2024—the playlist selection process aimed to direct the analysis towards educational materials that pertained to deaf disabilities.

The methodology employed for data analysis is Miles & A. Huberman's (1994) qualitative data analysis, which includes data reduction, data presentation, and conclusion drawing. This research will gather data in the form of text remark data and screenshots of brief video content from three predetermined compilations using this methodology. This information will be condensed and presented using semantics corresponding to social media engagement dimensions. The data is presented in narrative format, accompanied by screenshot evidence sourced from @jennifernatalie_'s TikTok content and pertinent prior research. By employing data source triangulation techniques, this study aims to substantiate the presented findings' validity (Rahardjo, 2010).

Result and Discussion

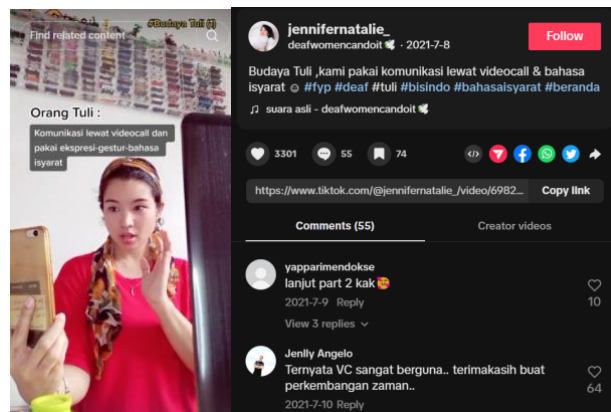
The results and research data on SMI engagement formation on social media will be offered. Additional discourse or discourse will be provided regarding each of the aspects above. Additionally, prior research will be incorporated into the discussion of research findings to elaborate on the result.

Usefulness of Information Content

This dimension describes how SMI ultimately influences the opinions of its audience by disseminating beneficial information via social media. On deaf culture playlists, one can frequently discover helpful information. Throughout this playlist, @jennifernatalie_ attempts to illustrate how deaf individuals experience daily life. @jennifernatalie juxtaposes videos in the

playlist concerning customs or cultural practices typically observed by deaf individuals with those that non-deaf individuals practice, highlighting the distinctions between the two groups. One can acquire more lucid illustrations and information from the content, enabling an individual without deafness to comprehend the appropriate treatment of deaf individuals.

Picture 3. Content introduces deaf culture to audiences

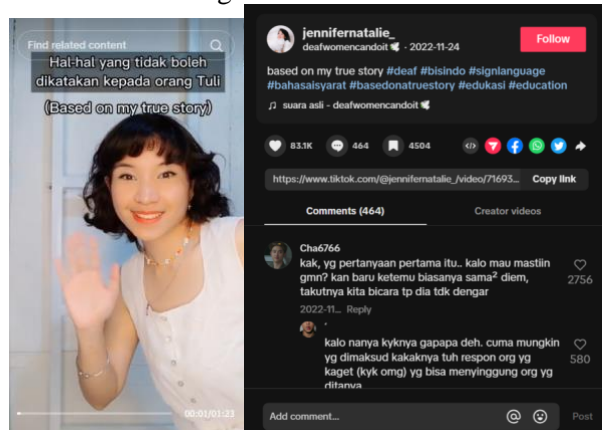


Source: jennifernatalie_ (2024)

An instance of content that presents an overview of the customs or culture observed by individuals who are deaf is depicted in Figure 3. People with disabilities utilize cellphone vibrations to indicate incoming calls and employ the video call function to convey sign language to the other party, according to this content (Jennifernatalie). Additionally, @jennifernatalie incorporates supplementary

text into her video to furnish context and support the information she intends to communicate. By utilizing this material, @jennifernatalie is deemed proficient in using social media functionalities to effectively disseminate information regarding deaf culture, notwithstanding her verbal communication limitations.

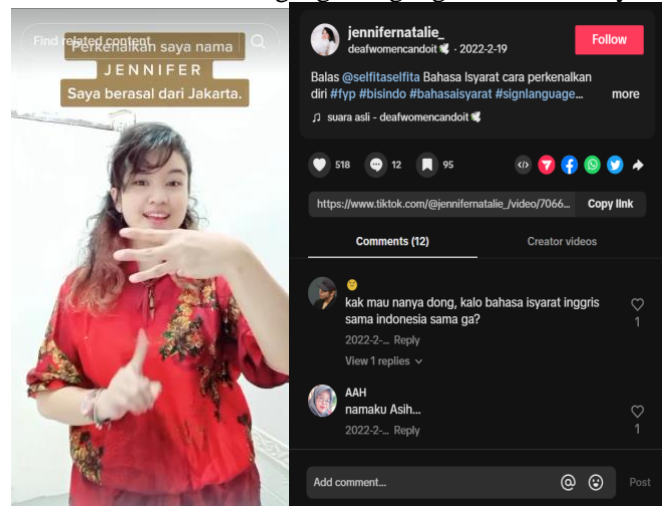
Picture 4. Content introduces things that should not be said to the visually impaired



Source: jennifernatalie_ (2024)

Additional valuable information was also presented on the educational playlist by @jennifernatalie_. An instance of the information communicated pertains to matters that ought not to be communicated to individuals who are blind. Within this context, @jennifernatalie poses several inappropriate sentences and queries, including one that calls into question the intelligibility of spoken

Picture 5. Content of using sign language to introduce yourself



Source: jennifernatalie_ (2024)

Furthermore, @jennifernatalie_ provided information regarding the utilization of sign language during specific instances. The content presented by Jennifer Natalietacie is depicted in Figure 5. The content demonstrates the process of introducing oneself using sign language. Jennifer Natalie describes in this content how to become acquainted with one another and say one's name using sign language. Concerning supplementary information, @jennifernatalie_ incorporates supplementary text into her video to facilitate the viewer's comprehension of the sign language that she is honing.

An observation that can be made regarding informative content is the incorporation of supplementary text in videos that have been shared by @jennifernatalie_. Additional text used to elucidate the meaning of a video for people who are deaf or hard of hearing is called closed caption (CC) in the multimedia domain. By utilizing this functionality, individuals who are deaf and unable to hear video sound can surmount their obstacles and gain a more comprehensive comprehension of a video's content. However, certain facets of communication remain exclusively auditory (Li et al., 2022).

language and one that requests deaf individuals to read the lips of non-deaf individuals. Additionally, this content garnered substantial user engagement, as evidenced by the 83,000 likes and 464 comments from other users. Additionally, it was revealed that Jennifer Natalie incorporated supplementary text into her video to convey information or details.

According to Ngai et al. (2020), if SMI can utilize social media features effectively, they can improve the appearance of all communications created, leading to increased engagement in the form of likes and comments. Mack et al. (2020) further elaborated that the development of technology to generate CC automatically is essentially underway so that deaf individuals can automatically receive CC in all social media content. Considered capable of facilitating the inclusive dissemination of information are a number of the features of social media that have been developed recently.

Jennifer Natalie, in her capacity as SMI, has utilized social media to disseminate various beneficial information regarding the routines of individuals with disabilities, according to the findings mentioned above. Building engagement is achieved when the audience perceives the content as valuable information. Through providing remarks and likes (Ngai et al., 2020). SMIs typically possess expertise or profound knowledge in a particular domain; therefore, disseminating valuable information serves as a strategy to foster engagement with their audience (Chee et al., 2023). Additionally, the utility of the information they offer influences the

credibility of an SMI (Ruiz-Gomez, 2019). Suppressibly, an SMI must be capable of delivering advantages to its audience by providing diverse, high-information-value content to elicit engagement as feedback.

Creation of the Dialogic Loop

This dimension elucidates how SMI can enable its audiences to furnish mechanisms through which they can communicate with one another. Specifically,

Picture 6. Content responds to requests from the audience

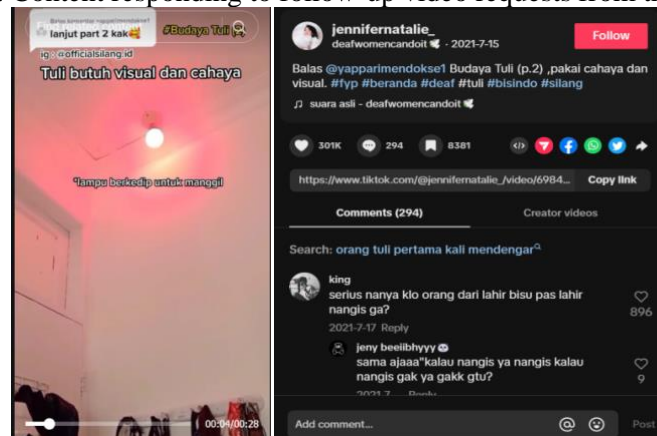


Source: jennifernatalie_ (2024)

A portion of the content that @jennifernatalie_ uploads is in response to audience requests. Following the directives provided by the account @rahmaocavianafads.psi, Jennifer Natalie produced visual content (Figure 6) showcasing sign language applied to song covers. In this instance, the account @rahmaocavianafads.psi disclosed that he enjoyed @jennifernatalie_'s

content concerning song adaptations. In response to the remarks made by @rahmaocavianafads.psi, @jennifernatalie_ uploaded a rendition of the song Aku Yang Salah. Furthermore, the exchange continued as @rahmaocavianafads.psi conveyed gratitude to @jennifernatalie_ in the remarks section, to which @jennifernatalie_ replied with emoticons.

Picture 7. Content responding to follow-up video requests from the audience



Source: jennifernatalie_ (2024)

Natalie provided additional information concerning the responses individuals with disabilities give to inquiries from the exterior of their residences. Unlike the situation depicted in Figure 6, @yapparimendokse1 did not respond in this instance. Nevertheless, this demonstrates that Jennifer Natalie activated the conversation column function to facilitate interaction with her audience.

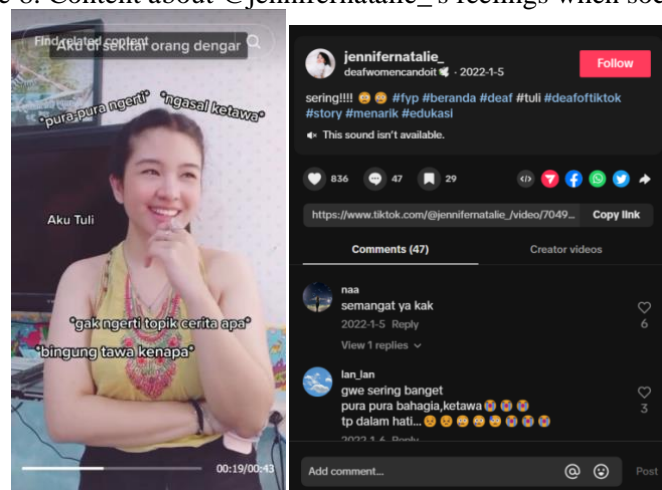
Engaging content and functionalities on social media platforms facilitate user interaction. According to Gell et al. (2023), using social media influencers in campaign execution results in greater levels of engagement, including interaction and sharing, than conventional methods. SMI-uploaded engaging content can encourage audience participation through likes, comments, or further sharing (Wariski & Jumiati, 2023). Currently, social media platforms include a live-streaming functionality that enables users

to communicate directly with SMI (Alam, 2020). In order to foster ongoing positive relationships and facilitate interactive communication, SMI ought to optimize every aspect of social media (Ngai et al., 2020).

Affectivity Dimensions

The affectivity dimension elucidates the mode of communication employed by SMI members, which consists of expressing their emotions or sentiments. Specifically, @jennifernatalie_shared various content on the feelings she encountered while deaf. Jenny-Natalie frequently encounters instances where she cannot comprehend the verbal communication of those in her vicinity due to her hearing impairment. Using this aspect, the audience is able to understand the emotions that deaf individuals experience when interacting with hearing and verbally literate individuals.

Picture 8. Content about @jennifernatalie_'s feelings when socializing

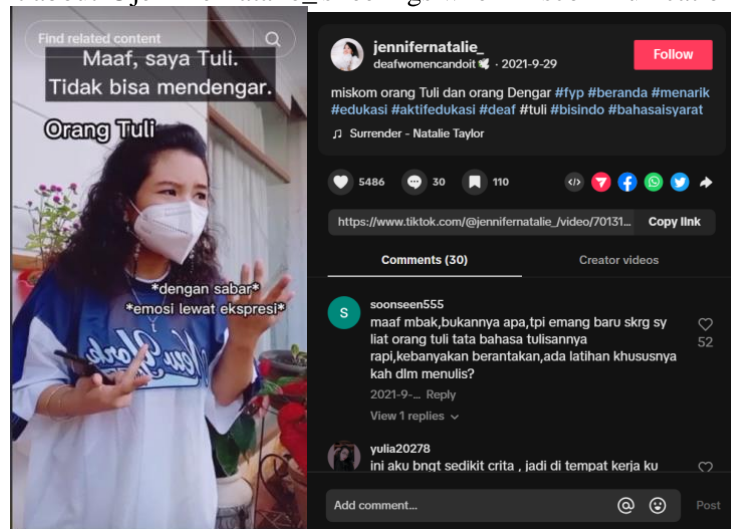


Source: jennifernatalie_ (2024)

The content depicted in Figure 8 is extracted from an educational playlist and illustrates the emotions that @jennifernatalie experiences when interacting with individuals who rely on verbal communication. Jennifer Natalie, being deaf, is undoubtedly unable to adequately process the messages communicated by the person she is conversing with. As a result, she needs clarification

regarding the appropriate facial expression to employ. Even @jennifernatalie_ stated in the content's caption that she frequently experiences this condition. Audiences can discover how individuals with disabilities, particularly Jennifer Natalie, feel when interacting with others or communicating verbally through this material.

Image 9. Content about @jennifernatalie_'s feelings when miscommunication occurs



Source: jennifernatalie_ (2024)

The depicted content in Figure 9 illustrates a moment when specific individuals lacked comprehension regarding the disability that Jennifer Natalie encountered. Within this material, @jennifernatalie_ recounts an incident in which she encountered difficulty comprehending a verbal exchange involving an interlocutor. The interlocutor's response indicated a lack of recognition on her part regarding @jennifernatalie_'s status as an individual with a disability. The interlocutor's response indicates that he requested @jennifernatalie_ to conceal her disguise once more when she attempted to respond verbally to the conversation. This was deemed to have offended @jennifernatalie_, who, despite having previously used sign language, did not comprehend the interlocutor's message in this instance. Through this material, viewers are encouraged to develop an understanding of the plight of individuals with special hearing requirements and to recognize that sign language signifies the presence of a person with a disability.

Audiovisual content has enabled a more precise depiction of an individual's emotions. Incorporating visual and auditory elements into social media content can enhance the clarity of an illustration or provide additional context to the intended message. Social media platforms have the capability to transmit content in the form of emoticons, which enhances the emotional impact of the message sender's expression beyond the confines of text-only communication (Ge & Gretzel, 2018). Additionally, Agustina (2020)

explains that social media content can convey emotions due to its support for various message formats, including humor, adverse actions, etc. Additionally, social media content may inspire an individual to attempt the products or services it promotes by evoking feelings of pride or enjoyment concerning the subject (Santiyuda et al., 2023). Social media content can enhance the portrayal of the emotions experienced by deaf individuals, particularly @jennifernatalie_, thus contributing to the clarity and significance of the message she intends to communicate.

Based on an accumulation of research about the affectivity dimension, it can be concluded that @jennifernatalie_ has expressed her feelings as an individual with a disability via social media. SMI can increase engagement by candidly sharing her personal experiences on social media (Gross & von Wangenheim, 2022). Audiences will seek and appreciate the genuineness and authenticity of SMI, according to Balaban and Szambolics (2022), because this fosters emotional attachment. According to Rehman et al. (2023), SMI strives to exhibit itself authentically to enable social media audiences to gain insight into its self-concept and establish social connections. An SMI can establish a relationship known as parasocial interaction using communications that apply to real-life situations (Permana & Astuti, 2023). Ultimately, examining this aspect indicates that SMI must possess the ability to genuinely convey their emotions on social media to evoke a response from the audience.

Collectivity Dimension

SMI facilitates a variety of forms of audience participation through collectivity to inspire collective action. In this aspect, SMI can foster audience engagement by quoting the work of others, posing inquiries, and offering compliments (Ngai et al., 2020). SMI may

utilize this dimension to engage with a broader audience or the group. By leveraging this aspect, SMI can communicate a message of passion that encourages the wider audience to engage in collaborative efforts. This is inextricably linked to social media, which effectively facilitates mass communication.

Image 10. Content where @jennifernatalie_ asks for audience opinion

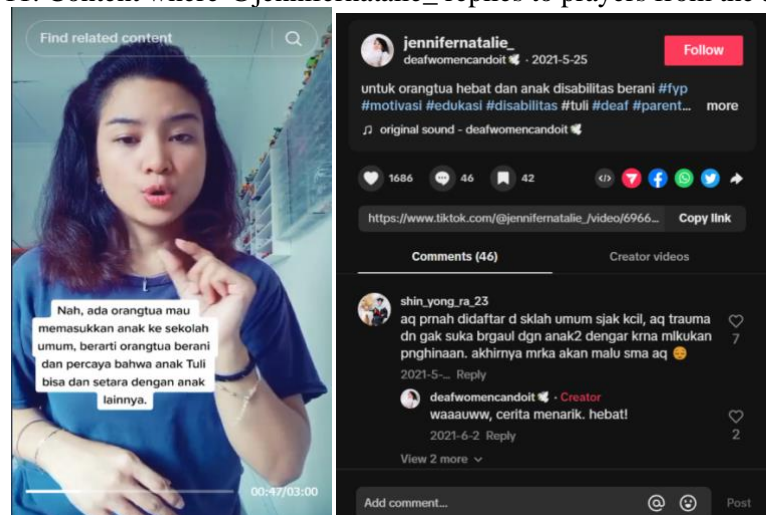


Source: jennifernatalie_ (2024)

Image 10 illustrates the content in which @jennifernatalie_ solicited audience feedback concerning a scenario where a parent publicly discloses a dishonor or critiques their child's shortcomings. Additionally, @jennifernatalie_ includes CC in this content concerning the verbal message she imparts. Furthermore, @jennifernatalie_ requested audience feedback in the caption appended to this

posting. By engaging in this activity, Jennifer Natalie actively participated in audience interaction. This content was commented on by 21 TikTok users and garnered 253 likes. The audience's active participation in offering feedback on the viewpoints conveyed by @jennifernatalie_ further demonstrates her ability to cultivate audience engagement effectively.

Image 11. Content where @jennifernatalie_ replies to prayers from the audience

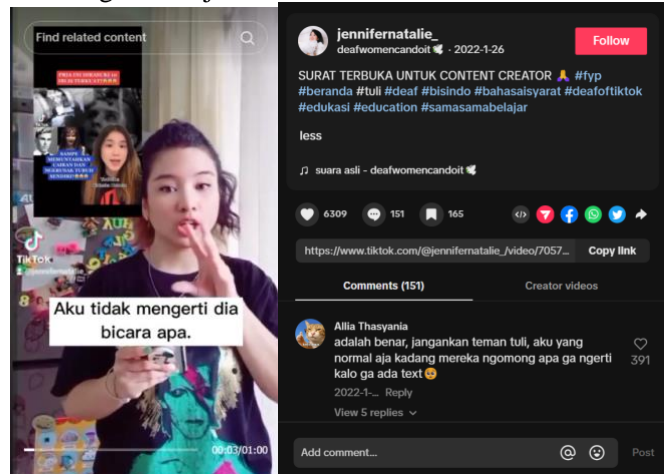


Source: jennifernatalie_ (2024)

Through collective communication, the information in Figure 11 demonstrates that Jennifer Natalie inspires parents to enroll their deaf children in public institutions, although they have special requirements. He informs parents that children with disabilities are entitled to the same privileges as their non-disabled counterparts. In this instance, @jennifernatalie_ also advised parents to

continue fostering their children's motivation, confidence, and enthusiasm for school attendance. The audience also expressed various opinions and remarks in response to the material, including personal experiences with bullying at school. Additionally, Jennifer Natalie responded to numerous comments, providing encouragement and gratitude and fostering user interaction.

Image 12. @jennifernatalie_'s reaction to content



Source: jennifernatalie_ (2024)

Content creators frequently publish reaction content in response to other content or issues. Jennifer Natalie also expressed this notion in her content, displayed in Figure 12. Jennifernatalie explained in this piece of content that certain digital content was produced without text/CC, which prevented her from comprehending the intended message. Regarding engaging content, @jennifernatalie_ cannot fathom why an individual would find it amusing without a CC to substantiate it. Conversely, @jennifernatalie_ expresses her emotions through a message in which she uses CC to the greatest extent to ensure that the media audience can comprehend her message. Furthermore, @jennifernatalie_ alludes to several materials with CC embeddings, facilitating comprehension of the message by presenting them as videos that other content creators may emulate. Additionally, 151 users commented on this content, with some expressing agreement with what @jennifernatalie_ stated.

Social media has evolved into a communication instrument regarded as productive in achieving results related to mass or collective communication. Social media is a platform that facilitates mass self-

communication, enabling self-mediants (SMIs) to deliver their messages directly to a sizable audience and generate collective feedback (Anjani & Irwansyah, 2020). The designation "SMI" essentially signifies that an individual must possess a minimum number of followers to qualify as an influencer (Ruiz-Gomez, 2019). An increase in the number of individuals who accept an invitation from an influencer is directly proportional to the magnitude of their follower base (Ki et al., 2020). SMI requires the capacity to conduct persuasive mass communication via social media to influence a broad spectrum of audiences.

The dimension of collectivity can be broadly characterized as a collective appeal extended by Jennifer Natalie to her audience. If taken literally, SMI can be defined as an influencer, which refers to an individual whose communications exert the most significant possible influence on the audience by utilizing invitations or requests for action (Ruiz-Gomez, 2019). SMI is regarded as having the ability to influence media audiences due to their expertise or experience in a particular field (Ngai et al., 2020). The more persuasive the messages disseminated through social media, the more influence SMI has over those

messages (Balaban & Szambolics, 2022). SMI will furnish a multitude of justifications for an invitation in order to effectively communicate a persuasive message (Okuah et al., 2019). As a trusted communicator to the media audience, SMI must optimize its function of effectively transmitting messages precisely, enabling the audience to comprehend the extended invitation profoundly.

Connectivity Dimensions

The dimension of collectivity can be broadly characterized as a collective appeal extended by Jennifer Natalie to her audience. If taken literally, SMI can be defined as an influencer, which refers to an individual whose communications exert the most significant

possible influence on the audience using invitations or requests for action (Ruiz-Gomez, 2019). SMI is regarded as having the ability to influence media audiences due to their expertise or experience in a particular field (Ngai et al., 2020). The more persuasive the messages disseminated through social media, the more influence SMI has over those messages (Balaban & Szambolics, 2022). SMI will furnish a multitude of justifications for an invitation in order to effectively communicate a persuasive message (Okuah et al., 2019). As a trusted communicator to the media audience, SMI must optimize its function of effectively transmitting messages precisely, enabling the audience to comprehend the extended invitation profoundly.

Figure 13. The blind can drive like the general public

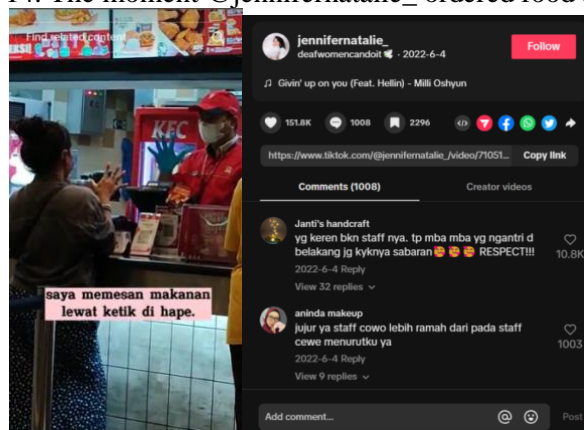


Source: jennifernatalie_ (2024)

Using one of the tracks on the deaf culture playlist, @jennifernatalie_ hopes to demonstrate that deaf individuals can perform tasks typically performed by those without that disability. @jennifernatalie_ demonstrates in picture 13 that individuals with disabilities can operate automobiles normally. Employing this material, @jennifernatalie_ demonstrates that her disabled spouse can operate a motor

vehicle. In addition, Jennifer Natalie advised individuals with disabilities who wish to operate a motor vehicle to exercise greater caution and maintain a safe distance. The engagement levels generated by this content are comparatively high, with 1319 users leaving comments and 353 thousand people expressing likes.

Image 14. The moment @jennifernatalie_ ordered food as usual



Source: jennifernatalie_ (2024)

The behavior of @jennifernatalie and that of society at large is also visually represented in Figure 14. Jennifer Natalie orders sustenance from a fast food restaurant in this content. Regarding her interaction with the restaurant attendant, Jennifer Natalie employs sign language. Additionally, the interlocutor employs various responsive communication strategies to comprehend the

menu item that Jennifer Natalie ordered. It is also possible to convey through this material that individuals with disabilities can perform the same tasks as those without disabilities. This content elicited active participation from the audience, as evidenced by the 1008 comments and 151 favorites. This content demonstrates that Jennifer Natalie is actively participating in society.

Image 15. Jentizen's use of nicknames



Source: jennifernatalie_ (2024)

An attribute within the connectivity dimension pertains to using nicknames by an SMI concerning their followers. In this particular instance, @jennifernatalie_ designates her followers as Jentizens. This demonstrates that @jennifernatalie_ desires to strengthen her connection with her followers as an SMI. By adopting this strategy, the community of @jennifernatalie_'s adherents is elevated to the status of a distinct group. The audience's interaction with SMI is integral to the engagement-building procedure.

Although social media serves as a communication instrument, it primarily aims to foster connections among individuals by sharing compelling content. Social media is regarded as a mechanism for creating social capital, in which individuals who participate in an online community establish connections via its discourse (Aksar et al., 2020). Social capital is fostered through the diverse emotional and social supports offered by SMI; consequently, the audience network develops a sense of belonging (Vitak et al., 2011). To establish a social capital relationship with its audience, SMI must demonstrate its authenticity again (Riemer & Hovorka, 2015). It is essential to strengthen the content so that

the audience feels a social connection to SMI despite explicitly needing to recognize it in the real world.

Based on an accumulation of research concerning the connectivity dimension, the capacity to recognize and integrate into society is a fundamental capability that SMI must possess. Ki et al. (2020) explained that an SMI will develop stronger emotional connections with his social media audiences the more frequently he presents himself as a community member. SMI who can present themselves as integrated members of society, encompassing both conduct and customs, generally need more support in influencing media audiences (Permana & Astuti, 2023). Establishing a sense of intimacy with his followers serves as a means for SMI to strengthen his brand while fostering profound emotional connections (Ki et al., 2020). Since social media communication is mediated, SMI must maintain its presence in society.

Conclusions

According to the findings of this study, @jennifernatalie_ is capable of illustrating five dimensions of social media engagement via various social media content.

As an SMI, Jennifer Natalie has effectively delivered valuable information, engaged in audience participation, expressed sentiments and emotions, extended collective invitations, and established herself as an integral component of society. In the interim, Jennifernatalie has found solace in social media functionalities, which support her verbal communication limitations. Aside from that, it is believed that @jennifernatalie_ has presented herself in an authentic manner as an individual with a disability in order to cultivate social connections with social media audiences. Ultimately, the disability of @jennifernatalie does not impede her ability to disseminate educational messages regarding the deaf disability, as she effectively utilizes social media as a means of communication and cultivates interaction with audiences on social media. Individuals with disabilities may employ this approach to utilize social media for expression and advocacy. Additional research may examine the social media content strategies employed by other individuals with disabilities to increase understanding of how disabled communities interact.

References

- Agustina, L. (2020). Viralitas Konten Di Media Sosial. *Majalah Semi Ilmiah Populer Komunikasi Massa*, 1(2), 149–160. <https://www.researchgate.net/publication/348296842>
- Alam, S. (2020). The Role Of Influencer As Persuasive Communication For Covid-19 Prevention. *Jurnal Spektrum Komunikasi*, 8(2).
- Ali Aksar, I., Danaee, M., Maqsood, H., & Firdaus, A. (2020). Women's social media needs and online social capital: Bonding and bridging social capital in Pakistan. *Journal of Human Behavior in the Social Environment*, 30(8), 989–1012. <https://doi.org/10.1080/10911359.2020.1790461>
- Anjani, S., & Irwansyah, I. (2020). Peranan Influencer Dalam Mengkomunikasikan Pesan Di Media Sosial Instagram. *Polyglot: Jurnal Ilmiah*, 16(2), 203. <https://doi.org/10.19166/pji.v16i2.1929>
- Annisa, F., Unde, A. A., & Farid, M. (2021). The Role of Influencers During the Covid-19 Pandemic on Social Media Instagram: a Study from Indonesia. *International Journal of Entrepreneurship and Sustainability Studies*, 1(1), 59–70. <https://doi.org/10.31098/ijeass.v1i1.606>
- Balaban, D. C., & Szabolcs, J. (2022). A Proposed Model of Self-Perceived Authenticity of Social Media Influencers. *Media and Communication*, 10(1), 235–246. <https://doi.org/10.17645/mac.v10i1.4765>
- Bintang, R., Farrel, M., Roland, D., & Satya, A. (2022). Pengaruh Isi Konten Edukasi Kesehatan di Instagram dr.Tirta (@dr.tirta) Terhadap Kesadaran Hidup Sehat Masyarakat. *JIKES: Jurnal Ilmu Kesehatan*, 1(1).
- Candrasari, Y. (2020). *Mediated Interpersonal Communication: A New Way of Social Interaction in the Digital Age*.
- Chee, R. M., Capper, T. S., & Muurlink, O. T. (2023). The impact of social media influencers on pregnancy, birth, and early parenting experiences: A systematic review. In *Midwifery* (Vol. 120). Churchill Livingstone. <https://doi.org/10.1016/j.midw.2023.10362>
- Ge, J., & Gretzel, U. (2018). Emoji rhetoric: a social media influencer perspective. *Journal of Marketing Management*, 34(15–16), 1272–1295. <https://doi.org/10.1080/0267257X.2018.1483960>
- Gell, S., Engel, E., Heiss, R., & Karsay, K. (2023). Social media influencers and adolescents' health: A scoping review of the research field. *Social Science & Medicine*, 116387. <https://doi.org/10.1016/j.socscimed.2023.116387>
- Gitnux. (2023). *Social Media In The Classroom Statistics [Fresh Research]*. <https://gitnux.org/social-media-in-the-classroom-statistics/>
- Gross, J., & von Wangenheim, F. (2022). Influencer Marketing on Instagram: Empirical Research on Social Media Engagement with Sponsored Posts. *Journal of Interactive Advertising*, 22(3), 289–310. <https://doi.org/10.1080/15252019.2022.2123724>
- Hartina, S. (2023). Edukasi Digital Influencers Kepada Masyarakat Tentang Penyakit Vitiligo Melalui Media Sosial. *J-Innovative*, 3(6), 9957–9969.
- Hidayat, A., Rifai, A., & Musi, S. (2023). Analisis Resepsi Edukasi Keuangan dalam Akun Tik Tok @Raymondchins (Studi pada Mahasiswa Sulawesi Selatan di Yogyakarta). *TRANSLITERA*, 12(1), 2088–2432. <https://doi.org/10.35457/translitera.v12i1.2676>
- Intelligent. (2023). *Half Of College Students Use Tiktok For Homework Help*.

- <https://www.intelligent.com/half-of-college-students-use-tiktok-for-homework-help/>
jennifernatalie_. (2024). *Profil TikTok @jennifernatalie_*.
https://www.tiktok.com/@jennifernatalie_
- Kassem, C. (2023). Qualitative content analysis: methods, practice and software, second edition. *International Journal of Research & Method in Education*, 46(5), 552–553.
<https://doi.org/10.1080/1743727X.2023.2244777>
- Ki, C. W. 'Chloe,' Cuevas, L. M., Chong, S. M., & Lim, H. (2020). Influencer marketing: Social media influencers as human brands attaching to followers and yielding positive marketing results by fulfilling needs. *Journal of Retailing and Consumer Services*, 55.
<https://doi.org/10.1016/j.jretconser.2020.102133>
- Koneksi Indonesia Inklusif. (2023). *Welcoming Jennifer Natalie dalam Pesta Inklusif 2023* ★★ [Photograph]. Instagram.
https://www.instagram.com/p/C0TxiPrvTW/?utm_source=ig_web_copy_link&igsh=MzRIODBiNWFIZA==
- Kostygina, G., Tran, H., Binns, S., Szczypka, G., Emery, S., Vallone, D., & Hair, E. (2020). Boosting Health Campaign Reach and Engagement Through Use of Social Media Influencers and Memes. *Social Media and Society*, 6(2).
<https://doi.org/10.1177/2056305120912475>
- Li, F. M., Lu, C., Lu, Z., Carrington, P., & Truong, K. N. (2022). An Exploration of Captioning Practices and Challenges of Individual Content Creators on YouTube for People with Hearing Impairments. *Proceedings of the ACM on Human-Computer Interaction*, 6(CSCW1).
<https://doi.org/10.1145/3512922>
- Mack, K., Bragg, D., Morris, M. R., Bos, M. W., Albi, I., & Monroy-Hernández, A. (2020). Social App Accessibility for Deaf Signers. *Proceedings of the ACM on Human-Computer Interaction*, 4(CSCW2).
<https://doi.org/10.1145/3415196>
- Miles, M. B., & A. Huberman, M. (1994). *Matthew B. Miles, Michael Huberman - Qualitative Data Analysis_ An expanded Sourcebook 2nd Edition (1994).pdf* (Second Edi). SAGE Publications Inc.
- Monggilo, Z. M. Z. (2020). Analisis Konten Kualitatif Hoaks Dan Literasi Digital Dalam @Komikfunday. *Jurnal Ilmu Komunikasi*, 9(1), 1–18.
- Neubaum, G., & Krämer, N. C. (2017). Opinion Climates in Social Media: Blending Mass and Interpersonal Communication. *Human Communication Research*, 43(4), 464–476.
<https://doi.org/10.1111/hcre.12118>
- Neuman, W. L. (2013). *Social Research Methods: Qualitative and Quantitative Approaches* (Seventh Ed). Pearson Education Limited.
- Ngai, C. S. B., Singh, R. G., & Lu, W. (2020). Exploring drivers for public engagement in social media communication with medical social influencers in China. *PLoS ONE*, 15(10) October).
<https://doi.org/10.1371/journal.pone.0240303>
- Okuah, O., Scholtz, B. M., & Snow, B. (2019, September 17). A grounded theory analysis of the techniques used by social media influencers and their potential for influencing the public regarding environmental awareness. *ACM International Conference Proceeding Series*.
<https://doi.org/10.1145/3351108.3351145>
- Pang, A., Shin, W., Lew, Z., & Walther, J. B. (2018). Building relationships through dialogic communication: Organizations, stakeholders, and computer-mediated communication. *Journal of Marketing Communications*, 24(1), 68–82.
<https://doi.org/10.1080/13527266.2016.1269019>
- Permana, A. R. M., & Astuti, B. (2023). Pengaruh Review Beauty Influencer Terhadap Niat Beli Produk Pada Media Sosial YouTube. *INOBIS: Jurnal Inovasi Bisnis Dan Manajemen Indonesia*, 6(3), 290–304.
- Rahardaya, A. K., & Irwansyah, I. (2021). Studi Literatur Penggunaan Media Sosial Tiktok Sebagai Sarana Literasi Digital Pada Masa Pandemi Covid-19. *Jurnal Teknologi Dan Sistem Informasi Bisnis*, 3(2), 308–319.
<https://doi.org/10.47233/jteksis.v3i2.248>
- Rahardjo, M. (2010). Triangulasi Dalam Penelitian Kualitatif. *Jurnal Research*, 5, 64–65.
- Rehman, H. I. ur, Parvaiz, S., Shakeel, M. A., Iqbal, H. K., & Zainab, U. (2023). Impact of Social Media Influencer Interactivity and Authenticity on Impulsive Buying Behaviour: Mediating Role of Attitude and Brand Attachment. *Journal of Policy Research*, 9(1), 538–551.
<https://doi.org/10.5281/zenodo.8224350>
- Riemer, K., & Hovorka, D. S. (2015). *Bridging or Bonding: Do Individuals gain Social Capital from Participation in Enterprise Social Networks? SEE PROFILE*.
<https://www.researchgate.net/publication/304452143>
- Ruiz-Gomez, A. (2019). Digital Fame and Fortune in the age of Social Media: A Classification of social media influencers. *ADResearch ESIC International Journal of*

- Communication Research*, 19(19), 08–29.
<https://doi.org/10.7263/adresic-019-01>
- Santiyuda, P. C., Luh, N., Purnawan, R., Ras, N. M., Gelgel, A., & Komunikasi, P. I. (2023). Kampanye #Berkaingembira Dalam Membangun Kesadaran Generasi Z Akan Budaya Berkain. In *Jurnal Communio : Jurnal Ilmu Komunikasi* (Vol. 12, Issue 1).
- Sharma, T., & Sharma, S. (2021). A study of YouTube as an effective educational tool. *Journal of Contemporary Issues in Business and Government*, 27(1).
<https://cibg.org.au/2686>
- Vitak, J., Ellison, N. B., & Steinfield, C. (2011). *The Ties That Bond: Re-Examining the Relationship between Facebook Use and Bonding Social Capital*.
- Wariski, I., & Jumiati, J. (2023). Strategi Pemanfaatan Media Sosial dan Influencer oleh Dinas Pariwisata Provinsi Sumatera Barat dalam Mempromosikan Pariwisata di Sumatera Barat. *Jurnal Manajemen Dan Ilmu Administrasi Publik (JMIAP)*, 5(3), 353–323.
<https://doi.org/10.24036/jmiap.v5i3.844>
- Wisessathorn, M., Pramepluem, N., & Kaewwongsa, S. (2022). Factor structure and interpretation on the Thai-Social Media Engagement Scale (T-SMES). *Heliyon*, 8(7).
<https://doi.org/10.1016/j.heliyon.2022.e09985>
- Zhou, Y., Molina, S., Toumazatos, A., Tanbakju, A., & Arteaga, D. (2023). Targeting Gen Z's Media Consumption Habits in Financial Literacy Programs. *Opinion Snapshot*.