

# Pollution Level of the Downstream Area of Paguyaman River, Gorontalo, Indonesia: A Study Based on the Microalgae Distribution and Saprobic Index

*by Sitty Ainsyah Habibie*

---

**Submission date:** 26-May-2025 08:25AM (UTC+0700)

**Submission ID:** 2684792835

**File name:** Sitty\_Ainsyah\_Habibie.docx (371.59K)

**Word count:** 5737

**Character count:** 35651

## Pollution Level of the Downstream Area of Paguyaman River, Gorontalo, Indonesia: A Study Based on the Microalgae Distribution and Saprobic Index

Sitty Ainsyah Habibie<sup>1\*</sup>, Miftahul Khair Kadim<sup>1</sup>, Femy M. Sahami<sup>2</sup>

<sup>1</sup> Aquatic Resources Management Department, Faculty of Marine and Fisheries Technology, Universitas Negeri Gorontalo, Gorontalo, Indonesia

<sup>2</sup> Marine Science Department, Faculty of Marine and Fisheries Technology, Universitas Negeri Gorontalo, Gorontalo, Indonesia

\*Corresponding author: ainsyahabibie@ung.ac.id

Info Artikel: Diterima 24 November 2024; Direvisi 25 April 2025; Disetujui 26 April 2025  
Tersedia online: 19 Mei 2025; Diterbitkan secara teratur: Juni 2025

**Cara sitasi:** Habibie SA, Kadim MK, Sahami FM. Pollution Level of the Downstream Area of Paguyaman River, Gorontalo, Indonesia: A Study Based on the Microalgae Distribution and Saprobic Index. *Jurnal Kesehatan Lingkungan Indonesia* [Online]. 2025 May;24(2). <https://doi.org/10.14710/jkli.68391>.

### ABSTRAK

**Judul :** Level Kualitas Perairan Bagian Hilir Sungai Paguyaman, Gorontalo, Indonesia: Suatu Kajian Berdasarkan Distribusi Mikroalga dan Indeks Saprobik

**Latar Belakang:** Sungai Paguyaman membentang sepanjang 136,25 km dan merupakan daerah aliran sungai terbesar kedua di Provinsi Gorontalo. Bagian hilir sungai ini bermuara di Teluk Tomini dan berada di perbatasan antara Desa Girisa Kecamatan Paguyaman Kabupaten Boalemo dan Desa Bilato Kecamatan Boliyohuto Kabupaten Gorontalo. Bagian hilir sungai ini menjadi sumber penghidupan bagi masyarakat di sekitarnya, namun kualitas perairannya terancam akibat pencemaran organik yang berasal dari aktivitas domestik dan pertanian. Tujuan dari penelitian ini adalah untuk mengidentifikasi jenis dan distribusi mikroalga, dan menilai kualitas perairan menggunakan indeks saprobik di wilayah hilir Sungai Paguyaman, Gorontalo.

**Metode:** Pengambilan sampel dilakukan pada empat stasiun dengan masing-masing tiga ulangan, dimulai dari stasiun 1 tepat di bibir muara sungai, kemudian disusul stasiun 2 hingga 4 dengan jarak antar stasiun 3-4 km. Mikroalga yang diamati mencakup mikroalga planktonik (fitoplankton) dan mikroalga yang melekat pada substrat batu (perifiton). Sementara parameter fisik perairan mencakup kedalaman air, suhu, kecepatan arus, kecerahan, dan substrat dasar, serta parameter kimia perairan mencakup pH, oksigen terlarut (DO), dan salinitas.

**Hasil:** Hasil penelitian menunjukkan bahwa mikroalga yang ditemukan di wilayah hilir Sungai Paguyaman berasal dari 10 kelas yang terdiri dari 101 spesies dan 45 genus. Komposisi terbanyak berasal dari kelas Bacillariophyceae.

**Simpulan:** Berdasarkan nilai indeks keanekaragaman ( $H'$ ), indeks dominansi dan indeks keseragaman mikroalga, perairan secara umum berada dalam kategori komunitas stabil dengan keberadaan atau kepadatan biota yang merata. Nilai indeks saprobik (SI) 1,64 dan nilai indeks keadaan trofik (TSI) 0,65 menunjukkan bahwa tingkat saprobitas wilayah hilir Sungai Paguyaman saat ini berada pada tingkat Oligo/β-mesosaprobik yaitu termasuk pada kategori tercemar ringan. Temuan ini mengindikasikan bahwa perairan di hilir sungai mengalami penurunan kualitas yang dapat berdampak pada kesehatan ekosistem dan masyarakat.

**Kata kunci:** Fitoplankton; Indeks dominansi; Indeks keanekaragaman; Indeks keseragaman; Perifiton

Commented [Rev1]: Nama Authors dan judul artikel sudah disesuaikan

Commented [ad2]: Silahkan di isikan judul dan Abstrak dalam bahasa Indonesia

Commented [Rev3R2]: Terima kasih. Sudah ditambahkan.

Commented [Rev4]: Sudah dilengkapi dan ditambahkan

**ABSTRACT**

**Background:** Paguyaman River stretches for 136.25 km and represents the second largest drainage basin in Gorontalo Province. Its downstream area of the river empties into Tomini Bay and is located on the border between Girisa Village, Paguyaman Subdistrict, Boalemo Regency, and Bilato Village, Boliyohuto Subdistrict, Gorontalo Regency. This region constitutes a vital source of livelihood for the local community. However, organic pollution from domestic and agricultural activities threatens the quality of its waters. The objective of this study is to identify the types and distribution of microalgae and assess water quality using saprobic index in the downstream area of Paguyaman River, Gorontalo.

**Method:** Sampling was conducted at four stations with three replications per station. The sampling began at station 1, located at the river mouth, and continued to stations 2 through 4, with a distance of 3-4 km between stations. Microalgae observed included planktonic microalgae (phytoplankton) and microalgae attached to rock substrates (periphyton). The physical parameters included water depth, temperature, current velocity, brightness, and bottom substrate, while the chemical parameters included pH, dissolved oxygen (DO), and salinity.

**Result:** The findings revealed that microalgae in the downstream area of the Paguyaman River came from 10 classes of 101 species and 45 genera. The most significant composition comes from the Bacillariophyceae class.

**Conclusion:** According to the diversity index (*H'*), dominance index, and uniformity index of microalgae, the waters are generally classified as stable communities, characterized by the presence or density of biota that are evenly distributed. The Saprobic Index (SI) value of 1.64 and the Trophic Status Index (TSI) value of 0.65 indicate that the saprobic level of the downstream area of the Paguyaman River is currently at the Oligo/mesosaprobic level, which is included in the lightly polluted category. This finding indicates that the river downstream is experiencing degrading, potentially affecting the health of the ecosystem and the surrounding community.

**Keywords:** Dominance index; Diversity index; Periphyton; Phytoplankton; Uniformity index

**INTRODUCTION**

Water quality is a critical factor that impacts the sustainability of aquatic ecosystems as well as human health. Rivers are essential for various human needs, such as drinking water, irrigation, and industrial activities, but they are very vulnerable to pollution. Water pollution caused by human activities, including the disposal of domestic, industrial, and agricultural waste, can damage the balance of the ecosystem and threaten the health of people who depend on rivers as a water source. One effective method to assess water quality is by utilizing aquatic organisms, particularly microalgae, as biological indicators.

Microalgae are aquatic photosynthetic microorganisms that can be planktonic, epiphytic, and benthic<sup>1-4</sup>, and can thrive in a wide range of salinity levels, from freshwater and brackish water to marine environments<sup>5</sup>. Microalgae are essential in aquatic ecosystems as primary producers, providing oxygen and being a food source for various aquatic organisms<sup>5-7</sup>. Some of them exhibit sensitivity or tolerance to pollutants that make them valuable bioindicators for assessing the health of aquatic ecosystems<sup>1,8-11</sup>. Ecologically, the presence of microalgae in a water body is strongly influenced by physical and chemical factors, such as temperature, pH, salinity, nutrient concentration, and light intensity, biological parameters (predators and mortality), and the water cycle<sup>6,12</sup>.

Downstream areas often serve as the accumulation of various wastes and organic matter that can affect the composition and quantity of microalgae. These areas are particularly vulnerable to significant water pollution due to the accumulative impact of water quality carried over from upstream and midstream areas<sup>13,14</sup>. Conversely, this area holds significant potential for economic utilization. Additionally, it is also directly related to the estuary, which plays a crucial ecological role, by serving as a source of organic matter carried by tidal currents and providing habitat for various species.

Paguyaman Watershed is the second largest watershed in Gorontalo Province, which stretches along 136.25 km from the upstream located at Mount Dapi, the border between Karya Baru Village, Dengilo Subdistrict, Gorontalo Regency and Hulawa Village, Buntulia Subdistrict, Pohuwato Regency. The downstream part of the river empties into Tomini Bay and is located on the border between Girisa Village, Paguyaman Subdistrict, Boalemo Regency, and Bilato Village, Boliyohuto Subdistrict, Gorontalo Regency. The Paguyaman River has significant potential to support biodiversity, including microalgae.

The distribution of microalgae in the downstream area of the Paguyaman River is potentially influenced by organic and inorganic waste entering the river ecosystem. According to Ogbonna<sup>15</sup>, the accumulation of organic material can trigger the growth of certain microalgae. However, it can also decrease species diversity due to the dominance of certain types. The surrounding community utilizes the Paguyaman River to meet their needs, irrigate agricultural land, fisheries, industry, and even gold mining activities<sup>16</sup>. This utilization by the community can cause an increase in the amount of discharge and pollutants and damage to the environment<sup>17,18</sup>. Household waste, industrial waste, and waste from gold mining activities that are often still discharged in water bodies further exacerbate the decline in water quality and productivity.

Saprobity refers to the water quality affected by introducing organic matter into an aquatic environment. Saprobity assessment is generally done by observing organisms' numbers and species composition<sup>19</sup>. The level of saprobity can describe the extent of pollution in these waters, which will be reflected in the presence of microorganisms as pollution indicators<sup>4</sup>. Microorganisms, including various types of microalgae, have specific characteristics that allow them to live in certain environmental conditions. The types and abundance of organisms that reflect the saprobic conditions in a water body play a key role in determining its water quality and overall ecological well-being<sup>20</sup>.

Several studies have been carried out on the distribution of microalgae in various aquatic ecosystems throughout Indonesia. However, research focusing on the distribution of microalgae in downstream areas and their application as bioindicators of water pollution, particularly in the Gorontalo Province, remains limited. The objective of this study is to (1) determine the types and distribution of microalgae and (2) evaluate water quality using the saprobic index in the downstream area of the Paguyaman River, Gorontalo. The findings of this research are expected to foster the more efficient and sustainable utilization of water resources, ensuring that communities especially those reliant on water resources for daily consumption, agriculture, and fisheries, can maintain both their health and ecosystem balance. By contributing to improved water quality, this study supports environmental health and strengthens community resilience in addressing environmental changes and water pollution.

## MATERIALS AND METHODS

### Location and time of research

This study was carried out in the downstream area of the Paguyaman River in Gorontalo from June to July 2024. Four sampling stations start from downstream right at the mouth of the river, such as Station 1 (N 00°31'16.6"; E 122°38'52.00"), followed by station 2 (N 00°33'00.7"; E 122°38'02.50"), station 3 (N 00°33'59.1"; E 122°38'20.50"), and station 4 (N 00°36'11.0"; E 122°36'52.20"), with a distance of 3-4 km between stations (Figure 1).



Figure 1. Sampling locations in the Downstream area of Paguyaman River, Gorontalo

### Data collection procedures

Microalgae observed in this study included planktonic microalgae (phytoplankton) and microalgae attached to the rock substrate (periphyton). Phytoplankton and periphyton sampling was conducted at each station for three replicates. Plankton samples were obtained by filtering 5 L of water through a 25  $\mu$ m mesh plankton net. The filtered 8 ml samples were then preserved in a 4% formalin solution. Meanwhile, periphyton samples were taken on rock substrates in river waters by scraping the rock surface using a fine brush with a scraping surface area of

4x4 cm<sup>2</sup><sup>21</sup>. The scraping results were put into a sample bottle filled with distilled water and then preserved using a 1% Lugol solution. Sample observation was conducted at the Hydrobioecology and Biometrics Laboratory, Faculty of Marine and Fisheries Technology, Universitas Negeri Gorontalo. Plankton enumeration was carried out on 0.04 ml of plankton samples using a glass object. The number of plankton was observed using the whole observation method (census) for three replicates. The identification process was conducted using a Zeiss binocular microscope with 40 times magnification. Plankton and periphyton were identified using a microalgae identification key book from the National Marine Fisheries Service<sup>22,23</sup>.

Physical and chemical water parameters were measured at each station for three replicates. Physical parameters included temperature, current velocity, brightness, and bottom substrate. Otherwise, chemical parameters include pH, dissolved oxygen (DO), and salinity.

#### Data analysis

The plankton and periphyton parameters observed include diversity index, uniformity index, dominance index, saprobic index, and trophic saprobic index. The calculation were performed using the following formulas:

##### Diversity Index

The diversity index is used to assess the variety of plankton or periphyton species in the water and is calculated using the Shanon-Wiener equation Magurran<sup>24</sup> as follows:

$$H' = - \sum_{i=1}^s P_i \times \ln p_i$$

Descriptions:

H' = Shanon-Wiener diversity index

s = Number of species

P<sub>i</sub> = n<sub>i</sub> / N

n<sub>i</sub> = Number of individuals of the species

N = Total number of plankton or periphyton

Where the criteria for the value of H' according to Odum<sup>25</sup> as follows: 0 < H' < 2,303 low diversity; 2,303 < H' < 6,907 moderate diversity; dan H' > 6,907 high diversity.

##### Uniformity Index

The uniformity index is determined using the formula according to Arinardi et al.<sup>26</sup>:

$$e = \frac{H'}{H^{maks}}$$

Descriptions:

e = Uniformity index

H' = Shanon-Wiener diversity index

H<sup>maks</sup> = Ln of number of species

##### Dominance Index

Simpson's dominance index is used to assess the dominance of specific plankton or periphyton in the water and is calculated using the equation Odum<sup>25</sup> as follows:

$$D = - \sum_{i=1}^s \left( \frac{n_i}{N} \right)^2$$

Descriptions:

D = Dominance index

S = Number of species

N<sub>i</sub> = Number of individuals of the species

N = Total number of plankton

##### Saprobic Index

The saprobic index is used to determine the level of savings with the equation Dresscher dan Van Der Mark<sup>27</sup>:

$$SI = \frac{1C + 3D - 1B - 3A}{1A + 1B + 1C + 1D}$$

Descriptions:

SI = Saprobic index (-3 s.d. +3)

7

A = Species count of the polysaprobic group  
B = Species count of the  $\alpha$ -mesosaprobic group  
C = Species count of the  $\beta$ -mesosaprobic group  
D = Species count of the oligosaprobic group

42

According to Siregar et al.<sup>28</sup>, saprobic is a water quality condition caused by the addition of organic matter into a body of water. Arsad et al.<sup>4</sup> categorize oligosaprobic as unpolluted water conditions,  $\beta$ -mesosaprobic as mild to moderate pollution conditions,  $\alpha$ -mesosaprobic as moderate to severe pollution conditions, and polysaprobic as severe pollution conditions.

Trophic Saprobic Index

6

$$TSI = \frac{(nC) + 3(nD) - 1(nB) - 3(nA)}{1(nA) + 3(nB) + 1(nC) + 1(nD)} \times \frac{nA + nB - nC - nE}{nA + nB + nC + nD}$$

Descriptions:

TSI = Trophic Saprobic Index

nA = Individuals belonging to the Polysaprobic group

nB = Individuals belonging to the  $\alpha$ -mesosaprobic group

nC = Individuals belonging to the  $\beta$ -mesosaprobic group

nD = Individuals belonging to the Oligosaprobic group

nE = Individuals belonging to organisms outside groups A, B, C, and D

Table 1. Relationship between water pollution level and saprobic index<sup>27</sup>

Index SI and TSI	Saprobic Level	Fertilize	Pollute
(-3.0) s/d (-2.0)	Polysaprobic	Difficult to utilize fertility	Very heavy
(-2.0) s/d (-1.5)	Poly/ $\alpha$ -mesosaprobic		
(-1.5) s/d (-1.0)	$\alpha$ -meso/polysaprobic		Heavy
(-1.0) s/d (-0.5)	$\alpha$ -mesosaprobic		
(-0.5) s/d (0.0)	$\alpha/\beta$ (mesosaprobic)	Fertility is possible to use	Moderate
(0.0) s/d (+0.5)	$\beta/\alpha$ (mesosaprobic)		Delicate
(+0.5) s/d (+1.0)	$\beta$ (mesosaprobic)		
(+1.0) s/d (+1.5)	$\beta$ (meso/oligosaprobic)		
(+1.5) s/d (+2.0)	Oligo/ $\beta$ (mesosaprobic)	Fertility is possible to use	Very delicate
(+2.0) s/d (+3.0)	Oligo saprobic		

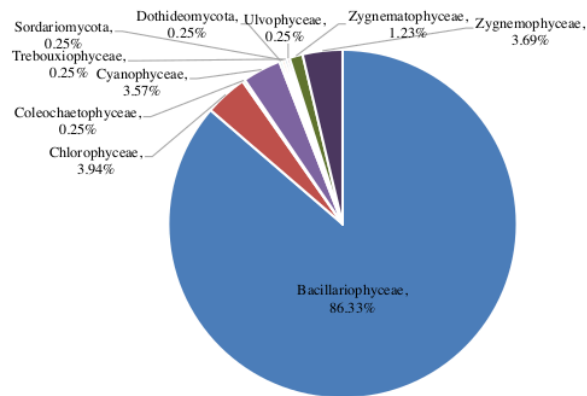
## RESULTS AND DISCUSSION

9

### Microalgae Community Structure in the Downstream Area of the Paguyaman River

The observed biological parameters were represented by the diversity, uniformity, and dominance value of microalgae, including both phytoplankton and periphyton. Plankton is a crucial element of the trophic structure, contributing to the formation of food webs that are vital for maintaining the balance of aquatic ecosystems<sup>29</sup>. Phytoplankton serves as a primary source of organic production, forming the foundation of the food chain and playing a key role in determining the health of aquatic ecosystems<sup>30</sup>, while periphyton is an animal or plant that lives attached to rocks, twigs, or other substrates whose existence is relatively sedentary or attached<sup>31</sup>. Physico-chemical factors of the water strongly influence the growth of plankton and periphyton. Baek et al.<sup>32</sup> explained that environmental parameters strongly influence phytoplankton's survival and replication success. In response to changes in environmental parameters, the relative abundance of each type of microalgal community constituent will also vary<sup>33</sup>. Thus, its existence can describe the basic information of water quality status.

Microalgae in the downstream area of the Paguyaman River were identified from 10 classes, consisting of 101 species and 45 genera. The 10 classes identified were Bacillariophyceae, Chlorophyceae, Coleochaetophyceae, Cyanophyceae, Dothideomycota, Sordariomycota, Trebouxiophyceae, Ulvophyceae, Zygnematomycophyceae, and Zygnemomycophyceae. Dothideomycota and Trebouxiophyceae were only found as plankton constituent classes, while Coleochaetophyceae and Ulvophyceae were only found in the periphyton. Microalgae composition in the downstream area of Paguyaman River, Gorontalo, is shown in Figure 2.



**Figure 2.** Composition of microalgae in the downstream area of Paguyaman River Gorontalo

The results of the microalgae sample identification revealed that the most abundant genus found in this study was *Navicula*, followed by *Nitzschia* from the Bacillariophyceae class. Both genera can live and adjust well to environmental changes, even in poor conditions. Zakiah and Mulyanto<sup>34</sup> reported that the genus *Navicula* is adaptable to mildly to moderately polluted environmental conditions. Christiani et al.<sup>35</sup> stated that *Navicula* has a slimy stalk used as a solid attachment to the substrate to live in turbulent waters. This is also described by Harmoko et al.<sup>36</sup>, who states that this genus can attach to the substrate. Likewise, *Nitzschia* has high survival and adaptation to various water conditions, including extreme conditions<sup>37</sup>.

Furthermore, the Bacillariophyceae class with the most significant composition in phytoplankton and periphyton is in the composition of 70.06% and 50.10%, respectively. According to Aryani et al.<sup>38</sup>, Bacillariophyceae area abundant in many waters due to their adaptability, resilience to extreme conditions, are cosmopolite, and have high reproductive capacity. A high composition of Bacillariophyceae class in Gorontalo waters has also been reported in epilithic microalgae in Bulango River, Gorontalo<sup>39</sup>, in Gorontalo Bay<sup>40</sup>, and Bone River, Gorontalo<sup>41</sup>. Moreover, Chrysophyta, as a phylum member of the Bacillariophyceae class, also dominates phytoplankton in Gorontalo Bay, Indonesia<sup>42</sup>.

The diversity index ( $H'$ ), dominance index ( $D$ ), and uniformity index ( $e$ ) of microalgae found in the downstream area of the Paguyaman River have varying values at each station. Microalgae diversity index ( $H'$ ) ranged from 3.079-4.932, the dominance index ( $D$ ) ranged from 0.053-0.325, and the uniformity index ( $e$ ) ranged from 0.772-1.261, as shown in Table 2.

Table 2. Diversity index, dominance index, and uniformity index of microalgae in the downstream area of Paguyaman River

Stations	Diversity Index ( $H'$ )	Dominance Index ( $D$ )	Uniformity Index ( $e$ )
S1	4.932	0.053	1.261
S2	4.433	0.071	1.194
S3	3.079	0.325	0.772
S4	4.550	0.073	1.125

Diversity is a mathematical description that can facilitate the analysis of information about the types and numbers of organisms. A value of  $H' > 3$  indicates the stability of the community is in prime condition (stable). As Iswanto et al.<sup>43</sup> also stated, the value of  $H' > 3$  indicates high community stability. Based on the microalgal diversity index ( $H'$ ) value, the waters in the downstream area of the Paguyaman River are a good place for microalgae to live. Microalgal diversity functions in the balance of aquatic ecosystems as well as natural food for aquatic ichthyofauna.



Furthermore, dominance index reflects competition or competition in resource utilization that leads to unbalanced or stressed environmental conditions<sup>40</sup>. The dominance index value of microalgae obtained at the research site is relatively low, which implies that no species are found with a density that is too high in the waters of the downstream area of the Paguyaman River. According to Odum<sup>25</sup>, Pirzan and Pong-Masak<sup>44</sup>, and Akmal et al.<sup>45</sup>, a dominance value close to 0 suggests that no single species heavily dominates others within the community structure.

Based on the value of the uniformity index (e) of microalgae (Table 2), the waters in the downstream area of the Paguyaman River show an even presence or density of biota. These value indicate that the waters are stable and capable of sustaining productive and long-term fisheries. The analysis results from all stations show that the microalgae Diversity Index falls within the high species uniformity category. A higher uniformity index value indicates a balanced distribution of individuals across each genus, with no genus dominating<sup>46</sup>.

#### Water Quality

The results of measurements of the physical and chemical water parameters are presented in Table 3.

Table 3. Water quality data in the downstream area of Paguyaman River, Gorontalo

3. Water quality data in the downstream area of Paguyaman River, Obontano					
No	Parameters	Stations			
		S1	S2	S3	S4
A. PHYSICS					
1	Temperature (°C)	29.73	29.53	29.13	29.27
2	Current velocity (m/s)	0.09	0.60	0.56	0.59
3	Brightness (cm)	17.67	17.67	15.67	16.33
4	Bottom Substrate	Muddy sand	Rocks	Sandy mud	Muddy sand
B. CHEMISTRY					
1	pH	7.12	7.50	7.53	7.60
2	DO (mg/L)	7.52	7.67	8.22	8.80
3	Salinity (ppt)	0.08	0.00	0.00	0.00

Various factors influence the presence of microalgae in waters, the main one being water quality. Generally, the water quality parameters in the downstream area of the Paguyaman River are in good condition and comply with class II water quality standards according to Government Regulation No. 22 of 2021 concerning the Implementation of Environmental Protection and Management. This is by the primary designation of the downstream area of the Paguyaman River, which has been used for irrigating agricultural and fishery land.

Temperature is a water quality parameter that plays a vital role in microalgae composition, abundance, and distribution<sup>47</sup>. The results of water temperature measurements were in the range of 29.13-29.73 °C and did not show significant differences between observation stations. This value is included in the standard and optimum water temperature category to support microalgae growth. Nybakken<sup>48</sup> explains that average sea surface temperatures generally range from 20-30 °C. Hartanto<sup>49</sup> explains that the optimum temperature range that supports microalgae growth in waters ranges from 20-30 °C.

According to Umiatun et al.<sup>50</sup>, current velocity can be categorized into very slow (<0.10 ms<sup>-1</sup>), slow (0.10-0.25 ms<sup>-1</sup>), medium (0.25-0.50 ms<sup>-1</sup>), fast (0.50-1 ms<sup>-1</sup>), and very fast (more than 1 ms<sup>-1</sup>). Current velocity plays an essential role in the spread of microalgae. Based on the current velocity category, the current velocity value at station 1 (0.09 ms<sup>-1</sup>) is included in the very slow current category. This is due to the location of station 1, which is right at the mouth of the river. Stations 2-4 have a current velocity of 0.60; 0.56; dan 0.59 ms<sup>-1</sup>, respectively, in the fast category. The conditions also support this during sampling, which coincides with the rain.

Brightness is the level of water transparency that can indicate whether or not there are many suspended particles in the water. Rominohtarto and Juwana<sup>51</sup> stated that brightness is the penetrating power of sunlight into a body of water. The results showed that the average brightness value of the downstream area of the Paguyaman River was in the optimal range for the growth of microalgae and river ichthyofauna. The lowest brightness value was found at station 3 because sampling at this station coincided with rainfall.

The degree of acidity (pH) is also an important water quality parameter for the growth and distribution of microalgae. The pH value is the negative logarithm of the concentration of hydrogen ions released in a body of water. Based on the measurement results, the average pH value obtained at each observation station (7.12-7.60) remains in the ideal range for microalgae life. Agustin et al.<sup>52</sup> suggested that the pH range of 6-8.1 is the optimum temperature for microalgae life.

Dissolved oxygen (DO) is the amount of oxygen dissolved in water and plays a vital role in the metabolic process, growth, and development of microalgae and ichthyofauna in river waters. In addition, oxygen is also needed in the aerobic process of oxidizing organic and inorganic materials. Arsad et al.<sup>4</sup> explained that microalgae abundance is positively correlated with DO. While salinity influences growth rate, food intake, food conversion efficiency, and survival.



Saprobic Index

Based on the microalgal community found at the research site, 50 species were recorded as saprobic groups, while 51 species were classified as non-saprobic groups. Saprobic constituent groups in the downstream area of the Paguyaman River are presented in Table 4.

Table 4. Saprobic constituent groups in the downstream area of the Paguyaman River

Saprobic Groups	Number of Species	Number of Individuals
Polysaprobic (A)	0	0
$\alpha$ -Mesosaprobic (B)	32	486
$\beta$ -Mesosaprobic (C)	2	4
Oligosaprobic (D)	16	57
Non-Saprobic	51	265

The saprobity index used to determine the level of water pollution consists of the Saprobic Index (SI) and the Trophic Saprobic Index (TSI). Based on the calculation results, the SI value is 1.64, and the TSI value is 0.65. These values indicate that the water conditions in the downstream area of the Paguyaman River is in the lightly polluted category with the level of water fertility (saprobic) showing Oligo/ $\beta$ -mesosaprobic conditions. According to Al marwazi et al.<sup>53</sup>, waters that have reached the mesosaprobic level indicate that the waters have experienced an increase in nutrient levels due to input of domestic waste and other human activities around the waters. In addition, Awaludin et al.<sup>19</sup> explained that the saprobic index, which shows the condition of lightly polluted waters, indicates the occurrence of organic matter pollution in these waters. It is estimated that organic matter entering the downstream waters of the Paguyaman River comes from land use activities that occur in the middle or even upstream of the river and then drift downstream. For comparison, similar conditions were also found in the downstream part of the Bone River, Gorontalo, as reported by Kadim et al.<sup>54</sup>.

This decline in water quality has the potential to impact the health of communities that depend on river water for their daily needs. Implementing stricter policies related to domestic and agricultural waste management and regular monitoring of river water quality is essential to maintain the sustainability of aquatic ecosystems and support the health of communities that depend on water from the Paguyaman River. In addition, the need for environmental education and awareness among the community is also crucial to preventing further pollution.

CONCLUSION

The findings revealed that microalgae in the downstream area of the Paguyaman River were represented by 10 classes, consisting of 101 species and 45 genera. The diversity index (H') value of microalgae is generally in the category of stable communities or has a high diversity value. The dominance index value is relatively low, which implies that no species are found with a density that is too high in the downstream area of Paguyaman River. Meanwhile, the uniformity index indicates the presence or density of evenly distributed biota. The saprobity level of the downstream area of the Paguyaman River is currently at the Oligo/ $\beta$ -mesosaprobic level, which is included in the lightly polluted category.

ACKNOWLEDGMENTS

This study was supported by Universitas Negeri Gorontalo through the Institute of Research and Community Service (LPPM) with contract No. B/795/UN47.D1.1/PT.01.03/2024. The authors are grateful to all parties who provided technical assistance during the study.

BIBLIOGRAPHY

1. Snow GC. Determining the health of river-dominated estuaries using microalgal biomass and community composition. *South African Journal of Botany* 2016;107:21–30. <https://doi.org/10.1016/j.sajb.2016.02.021>
2. Al-Harbi SM. Epiphytic microalgal dynamics and species composition on brown seaweeds (Phaeophyceae) on the Northern Coast of Jeddah, Saudi Arabia. *Journal Oceanography and Marine Research* 2017;5(153): 1-9. <https://doi.org/10.4172/2572-3103.1000153>
3. Wu N, Dong X, Liu Y, Wang C, Baattrup-Pedersen A, Riis T. Using river microalgae as indicators for freshwater biomonitoring: Review of published research and future directions. *Ecological Indicators* 2017; 81:124-131. <https://doi.org/10.1016/j.ecolind.2017.05.066>
4. Arsad A, Putra KT, Latifah N, Kadim MK, Musa M. Epiphytic microalgae community as aquatic bioindicator in Brantas River, East Java, Indonesia. *Biodiversitas* 2021;22(7):2961-2971. <https://doi.org/10.13057/biodiv/d220749>

5. Mahmudi M, Arsad S, Musa M, Lusiana ED, Buwono NR, Indahwati AD, Irmawati, Sukmaputri NA, Prasasti AL, Larasati AP, Sharfina AAS, Aldhiya PR, Mutiara R, Putri SG. Marine microalgae Assemblages of the East Java Coast Based on Sub-Habitats Representatives and their Relationship to the Environmental Factors. *Journal of Ecological Engineering* 2023;24(12):268-281. <http://dx.doi.org/10.12911/2298993/173580>
6. Zongo B, Boussim, J. The effects of physicochemical variables and tadpole assemblages on microalgal communities in freshwater temporary ponds through an experimental approach. *Aquatic Biosystems* 2015; 11(1):1-14. <https://doi.org/10.1186/s12999-014-0013-4>
7. Gogoi P, Sinha A, Sarkar SD, Chanu TN, Yadav AK, Koushlesh SK, Borah S, Das BK, Das SK. Seasonal influence of physicochemical parameters on phytoplankton diversity and assemblage pattern in Kailash Khal, a tropical wetland, Sundarbans, India. *Applied Water Science* 2019;9(156):1-13. <https://doi.org/10.1007/s13201-019-1034-5>
8. Wu NC, Schmalz B, Fohrer N. Development and testing of a phytoplankton index of biotic integrity (P-IBI) for a German lowland river. *Ecological Indicators* 2012;13(1):158-167. <https://doi.org/10.1016/j.ecolind.2011.05.022>
9. Wang X, Zheng B, Liu L, Li L. Use of diatoms in river health assessment. *Annual Research and Review in Biology* 2014;4(24):4054-4074. <https://doi.org/10.9734/ARRB/2014/11963>
10. Lange K, Townsend CR, Matthaei CD. A trait-based framework for stream algal communities. *Ecology and Evolution* 2016;6(1):23-36. <https://doi.org/10.1002/ece3.1822>
11. Ashour M, Elshobary ME, El-Shenody R, Kamil AW, Abomohra AEF. Evaluation of a native oleaginous marine microalga *Nannochloropsis oceanica* for dual use in biodiesel production and aquaculture feed. *Biomass and Bioenergy* 2019;120:439-447. <https://doi.org/10.1016/j.biombioe.2018.12.009>
12. Prazukin A, Shadrin N, Balycheva D, Firsov Y, Lee R, Anufrieva E. *Cladophora* spp. (Chlorophyta) modulate environment and create a habitat for microalgae in hypersaline waters. *European Journal of Phycology* 2020;2020:1-13. <http://dx.doi.org/10.1080/09670262.2020.1814423>
13. Zhao Y, Li J, Qi Y, Guan X, Zhao C, Wang H, Zhu S, Fu G, Zhu J, He H. Distribution, sources, and ecological risk assessment of polycyclic aromatic hydrocarbons (PAHs) in the tidal creek water of coastal tidal flats in the Yellow River Delta, China. *Marine Pollution Bulletin* 2021;173:113110. <https://doi.org/10.1016/j.marpolbul.2021.113110>
14. Deng M, Liu HT, Ouyang Z. Characteristics and driving factors of coastal rural domestic waste of the Yellow River Delta in China. *Journal of Cleaner Production* 2022;353:131670. <https://doi.org/10.1016/j.jclepro.2022.131670>
15. Ogbonna KE, Ogbonna JC, Njoku OU, Yamada K, Suzuki I. Effect of organic carbon sources on growth lipid production and fatty acid profile in mixotrophic culture of *Scenedesmus dimorphus* (Turpin) Kützinger. *The Microbe* 2024;3:100064. <https://doi.org/10.1016/j.microb.2024.100064>
16. Lahili R, Lihawa F, Dunggio I. Performance of Paguyaman Watershed management based on physical and chemical conditions of water. *Gorontalo Journal of Forestry Research* 2023;6(2):100-110. [in Indonesian]
17. Emilia I, Suheryanto S, Hanifah Z. Distribution of Cadmium metal in water and sediment in the Musi River, Palembang City. *Jurnal Penelitian Sains* 2013;16(2):59-64. [in Indonesian] <https://ejurnal.mipa.unsri.ac.id/index.php/jps/article/view/73>
18. Anh NT, Can LD, Nhan NT, Schmalz B, Luu TL. Influences of key factors on river water quality in urban and rural areas: A review. *Case Studies in Chemical and Environmental Engineering* 2023;8:100424. <https://doi.org/10.1016/j.csee.2023.100424>
19. Awaludin AS, Dewi NK, Ngabekti S. Plankton saprobic coefficient in Semarang State University Embung Waters. *Jurnal MIPA* 2015;38(2):115-120. [in Indonesian] <https://doi.org/10.15294/ijmms.v38i2.5780>
20. Abadi YP, Suharto B, Rahadi JB. Water quality analysis of Klintar River discharge liquid waste of paper industry, based on biology (plankton). *Jurnal Sumberdaya Alam dan Lingkungan* 2014;1(3):36-42. [in Indonesian] <https://jsal.ub.ac.id/index.php/jsal/article/view/141>
21. Pratiwi NTM, Hariyadi S, Kiswari DI. Periphyton community structure at upstream Cisadane River, Halimun Salak Mountain National Park, West Java. *Jurnal Biologi Indonesia* 2017;13(2):289-296. [in Indonesian] <https://dx.doi.org/10.14203/jbi.v13i2.3403>
22. Davis CC. The marine and freshwater plankton. Michigan (US): Michigan State University Press; 1995.
23. Prescott GW. How to know the freshwater algae. Montana (US): Wm. C. Brown Company Publishers; 1970.
24. Magurran AE. Ecology diversity and its measurement. New Jersey: Princeton University Press; 1988.
25. Odum EP. Basics of ecology. Yogyakarta: Gadjah Mada University Press; 1993.
26. Arinardi OH, Trimaningsih SH, Asnaryanti E. Abundance range and composition of predominant plankton in Central Indonesian Waters. Jakarta: Pusat Penelitian dan Pengembangan Oseanologi-LIPI; 1996. [in Indonesian]
27. Dresscher TGN, van der Mark H. A simplified method for the biological assessment of the quality of fresh and slightly brackish water. *Hydrobiologia* 1976;48(3):199-201. <https://doi.org/10.1007/BF00028691>

28. Siregar ZA, Anggoro S, Irianto HE, Purnaweni H. A saprobic index for quality of minapadi water and the fish osmotic performance level of minapadi. *E3S Web of Conferences* 2023;448(03062):1-9. <https://doi.org/10.1051/e3sconf/202344803062>
29. Acevedo-Trejos E, Brandt G, Bruggeman J, Merico A. Mechanism shaping structure and functional diversity of phytoplankton communities in the ocean. *Scientific Reports* 2015;5(8958):1-8. <https://doi.org/10.1038/srep08918>
30. Barangé M, Campos B. Models of species abundance: a critique of and an alternative to the dynamics model. *Marine Ecology Progress Series* 1991;69(3):293-298. <https://doi.org/10.3354/meps069293>
31. Asra R, Utami TS, Adriadi A. Diversity and abundance of periphyton on plan vegetation in Bento Swampas a water quality bioindicator. *Biospecies* 2022;15(2):1-10. [in Indonesian] <https://doi.org/10.22437/biospecies.v15i2.14924>
32. Baek SH, Lee M, Park BS, Lim, YK. Variation in phytoplankton community due to an autumn typhoon and winter water turbulence in Southern Korean coastal waters. *Sustainability* 2020;12(7):2781. <https://doi.org/10.3390/su12072781>
33. Tambaru R, Burhanuddin AI, Massinal A, Amran MA. Detection of marine microalgae (phytoplankton) quality to support seafood health: a case study on the west coast of South Sulawesi, Indonesia. *Biodiversitas* 2021; 22(11):5179-5186. <https://doi.org/10.13057/biodiv/d221156>
34. Zakariah U, Mulyanto M. Biodiversity and microalgae distribution based on geographical information system (GIS) at Southern Water of Malang District, East Java. *DEPIK, Jurnal Ilmu-ilmu Perairan, Pesisir dan Perikanan* 2020;9(3):478-483. [in Indonesian] <https://doi.org/10.13170/depik.9.3.17772>
35. Christiani, Insan AI, Widyartini DS. Abundance and biofuel potential of microphytobenthos from Pekacangan River waters affected by tapioca wastewater effluent. *Biosfera* 2015;32(3):169-175. [in Indonesian] <https://journal.bio.unsoed.ac.id/index.php/biosfera/article/view/340>
36. Harmoko H, Lokaria E, Misra S. Exploration of microalgae in Watervang Waterfall of Lubuklinggau City. *Bioedukasi: Jurnal Pendidikan Biologi* 2017;8(1):75-82. [in Indonesian] <http://dx.doi.org/10.24127/bioedukasi.v8i1.840>
37. Salamah S, Mentari D, Ariska D, Ahadi R. Plankton abundance in the waters of Nipah Beach, Gampong Rabo Pulo Aceh, Aceh Besar District. *Prosiding Seminar Nasional Biotik* 2018;418-424. [in Indonesian] <http://dx.doi.org/10.22373/pbio.v6i1.4279>
38. Aryani M, Fitriani L, Harmoko, Sepriyaningsih. Microalgae of bacillariophyta division found in Kasie River, Lubuklinggau Barat I Subdistrict, Lubuklinggau City. *Florea: Jurnal Biologi dan Pembelajarannya* 2020;7(1):48-53. [in Indonesian] <https://doi.org/10.25273/florea.v7i1.5206>
39. Kumaji SS, Katili AS, Lalu P. Identification of epilithic microalgae as environmental biomonitoring in Bulango River, Gorontalo Province. *Jambura Edu Biosfer Journal* 2019;1(1):15-22. [in Indonesian] <https://doi.org/10.34312/jebj.v1i1.2042>
40. Abudi MK, Ahmad NF, Pasingi N, Kadim MK. Performance of phytoplankton species in Gorontalo Bay. *Jurnal Kelautan* 2021;14(3):273-277. [in Indonesian] <https://doi.org/10.21107/jk.v14i3.9516>
41. Kono S, Tiopo AK, Pasingi N, Kadim MK. Abundance and ecological index of periphyton in Bone River Bone Bolango Regency Gorontalo. *Jurnal Sumberdaya Akuatik Indopasifik* 2021;5(3):235-243. [in Indonesian] <https://doi.org/10.46252/jsai-fpik-unipa.2021.Vol.5.No.3.137>
42. Kadim MK, Pasingi N, Kasim F. Spatial and temporal distribution phytoplankton in the Gorontalo Bay, Indonesia. *AACL Bioflux* 2018;11(3):833-845. <https://bioflux.com.ro/docs/2018.833-845.pdf>
43. Iswanto CY, Hutabarat S, Purnomo PW. Water fertility analysis based on plankton biodiversity, nitrate and phosphate in Jali River and Lereng River Keburuhan Village, Purworejo. *Diponegoro Journal of Maquares* 2015;4(3):84-90. [in Indonesian] <https://doi.org/10.14710/marj.v4i3.9323>
44. Pirzan AM, Pong-Masak PR. Relationship between productivity of brackishwater pond and diversity of phytoplankton. *Jurnal Riset Akuakultur* 2007;2(2):211-220. [in Indonesian] <https://ejournal-balitbang.kkp.go.id/index.php/jra/article/view/2275>
45. Akmal Y, Humairani R, Muliari, Hanum, Zulfahmi I. Phytoplankton community as bioindicators in aquaculture media tilapia (*Oreochromis niloticus*) exposed to detergent and pesticide waste. *Akuatikisile: Jurnal Akuakultur, Pesisir dan Pulau-pulau Kecil* 2021;5(1):7-14. [in Indonesian] <https://doi.org/10.29239/j.akuatikisile.5.1.7-14>
46. Tarigas MT, Apriansyah, Safitri I. The community structure of epiphytic microalgae associated with *Sargassum* sp. on the waters of the Sepempang Village Natuna Regency. *Jurnal Laut Khatulistiwa* 2020;3(2):61-68. [in Indonesian] <https://doi.org/10.26418/ikuntan.v3i2.37932>
47. Handayani D. Plankton abundance and diversity in tidal waters of Blanakan pond, Subang. Undergraduate Thesis. Jakarta: Jurusan Biologi, Uin Syarif Hidayatullah; 2009. [in Indonesian]
48. Nybakken JW. Marine Biology: An Ecological Approach. Jakarta: PT Gramedia Pustaka Utama; 1988. [in Indonesian]

49. Hartanto BY. The diversity of phytoplankton and relation with water parameters in physics and chemistry in the Cengklik Reservoir Boyolali. Undergraduate Thesis. Yogyakarta: Fakultas Keguruan dan Ilmu Pendidikan, Universitas Sanata Dharma; 2015. [in Indonesian]
50. Umiatun S, Carmudi, Christiani. The Relationship between silica content and the abundance of benthic diatoms along the Pelus River, Banyumas Regency. *Scripta Biologica* 2017;4(1):61-67. [in Indonesian] <https://dx.doi.org/10.20884/1.sb.2017.4.1.387>
51. Romimohtarto K, Juwana S. Marine Meroplankton: Larvae of Marine Animals that Become Plankton. Jakarta: Djambatan; 2004. [in Indonesian]
52. Agustin AD, Solichin A, Rahman A. Analysis of watre's trophic state based on periphyton's abundance and types in Jabungan River, Banyumanik, Semarang. *Journal of Maquares* 2019;8(3):185-192. [in Indonesian] <https://doi.org/10.14710/marj.v8i3.24254>
53. Al Marwazi M, Lestari N, Japa L. Water quality of freshwater fish farming ponds at Batu Kumbung Fish Seed Center West Lombok using algae bioindicators. Universitas Mataram: Prosiding Seminar Nasional Pendidikan Biologi; 2018. [in Indonesian]
54. Kadim MK, Pasisingi N. Physical habitat conditions and macroinvertebrate diversity as indicators of pollution in the Bone River, Gorontalo. *Jurnal Kesehatan Lingkungan Indonesia* 2024;23(3):301-310. [in Indonesian] <https://doi.org/10.14710/jkli.23.3.301-310>

# Pollution Level of the Downstream Area of Paguyaman River, Gorontalo, Indonesia: A Study Based on the Microalgae Distribution and Saprobic Index

## ORIGINALITY REPORT

22%  
SIMILARITY INDEX

18%  
INTERNET SOURCES

12%  
PUBLICATIONS

6%  
STUDENT PAPERS

## PRIMARY SOURCES

1 [www.e3s-conferences.org](http://www.e3s-conferences.org) 3%  
Internet Source

2 Submitted to Universitas Negeri Surabaya 2%  
Student Paper

3 [jurnalbiologi.fmipa.unila.ac.id](http://jurnalbiologi.fmipa.unila.ac.id) 2%  
Internet Source

4 [jpk.ejournal.unri.ac.id](http://jpk.ejournal.unri.ac.id) 1%  
Internet Source

5 [ejournal.undip.ac.id](http://ejournal.undip.ac.id) 1%  
Internet Source

6 Submitted to Politeknik Ilmu Pelayaran Semarang 1%  
Student Paper

7 Sulistiono Sulistiono, Eva Cristine Ronauli, Niken Tunjung Murti Pertiwi, Hefni Effendi. "PHYTOPLANKTON BIODIVERSITY AND POLLUTION BIOINDICATOR IN BOJONEGARA" 1%

# COASTAL WATERS, BANTEN BAY, INDONESIA", Biospecies, 2022

Publication

8	<a href="http://www.bioflux.com.ro">www.bioflux.com.ro</a> Internet Source	1 %
9	<a href="http://www.scilit.net">www.scilit.net</a> Internet Source	1 %
10	<a href="http://www.researchgate.net">www.researchgate.net</a> Internet Source	1 %
11	<a href="http://media.neliti.com">media.neliti.com</a> Internet Source	<1 %
12	<a href="http://www.coursehero.com">www.coursehero.com</a> Internet Source	<1 %
13	Mohammad Mahmudi, Sulastri Arsad, Muhammad Musa, Evellin Dewi Lusiana et al. "Relationship between habitat characteristics and microalgae community on the coastal area of Malang Regency, Indonesia", Ecological Engineering & Environmental Technology, 2025 Publication	<1 %
14	<a href="http://eprints.itenas.ac.id">eprints.itenas.ac.id</a> Internet Source	<1 %
15	<a href="http://talenta.usu.ac.id">talenta.usu.ac.id</a> Internet Source	<1 %



16

Rudy Sugiharto, Agus Tjahjono. "The Relationship between Plankton Abundance and Abiotic Parameters in the Downstream Section of the Musi River, Palembang", Egyptian Journal of Aquatic Biology and Fisheries, 2021

Publication

<1 %

17

[journal.unhas.ac.id](http://journal.unhas.ac.id)

Internet Source

<1 %

18

Submitted to Miami Dade College

Student Paper

<1 %

19

[jppipa.unram.ac.id](http://jppipa.unram.ac.id)

Internet Source

<1 %

20

[www.jeeng.net](http://www.jeeng.net)

Internet Source

<1 %

21

Muzammal Hoque, Sahina Akter, Sonam Angmo, Karankumar Ramteke et al.

"Preliminary Insights into the Environmental Drivers of Coscinodiscus Bloom in a Tropical Estuary", Thalassas: An International Journal of Marine Sciences, 2025

Publication

<1 %

22

Submitted to University of Southampton

Student Paper

<1 %

23

[eprints.undip.ac.id](http://eprints.undip.ac.id)

Internet Source

<1 %

24	<a href="http://jurnalfkip.unram.ac.id">jurnalfkip.unram.ac.id</a> Internet Source	<1 %
25	<a href="http://link.springer.com">link.springer.com</a> Internet Source	<1 %
26	<a href="http://mts.intechopen.com">mts.intechopen.com</a> Internet Source	<1 %
27	<a href="http://www.ilec.or.jp">www.ilec.or.jp</a> Internet Source	<1 %
28	<a href="http://evols.library.manoa.hawaii.edu">evols.library.manoa.hawaii.edu</a> Internet Source	<1 %
29	<a href="http://peerj.com">peerj.com</a> Internet Source	<1 %
30	<a href="http://www.frontiersin.org">www.frontiersin.org</a> Internet Source	<1 %
31	<a href="http://www.mdpi.com">www.mdpi.com</a> Internet Source	<1 %
32	Wendie Levasseur, Patrick Perré, Victor Pozzobon. "A review of high value-added molecules production by microalgae in light of the classification", Biotechnology Advances, 2020 Publication	<1 %
33	<a href="http://docplayer.info">docplayer.info</a> Internet Source	<1 %

34

[eprints.uad.ac.id](https://eprints.uad.ac.id)

Internet Source

&lt;1 %

35

[www.ncbi.nlm.nih.gov](https://www.ncbi.nlm.nih.gov)

Internet Source

&lt;1 %

36

[www.tede2.ufrpe.br:8080](http://www.tede2.ufrpe.br:8080)

Internet Source

&lt;1 %

37

Annisa Nurul Sa'diah, Tugiyono Tugiyono,  
Suratman Umar, Gregorius Nugroho Susanto.

"Impact of Sewage Discharge on The  
Community Structure and Gonad Maturity of  
Fish in The Way Awi River Bandar Lampung",  
Jurnal Ilmiah Biologi Eksperimen dan  
Keanekaragaman Hayati (J-BEKH), 2024

Publication

&lt;1 %

38

E. I. Hassan, R. Bonjoru, V. R. Ndeham.

"Phytoplankton Diversity and Abundance in  
Lake Ribadu, Adamawa State, Nigeria", Asian  
Journal of Fisheries and Aquatic Research,  
2019

Publication

&lt;1 %

39

Iko Imelda Arisa, Maisa Faradila, Siska Mellisa.

" The effect of leaf extract in feed as an  
immunostimulant for philla bacterial  
infections ", BIO Web of Conferences, 2025

Publication

&lt;1 %

40 Md Asaduzzaman, Sumi Akter, Nayeema Ferdausy Hoque, Abrar Shakil, Aysha Rahi Noor, Mst. Nahid Akter, Md Moshiur Rahman. "Multifaceted linkages among eco-physiological factors, seasonal plankton dynamics and selective feeding behavior of the green mussel (*Perna viridis*) in the south-east coast of the Bay of Bengal", Journal of Sea Research, 2020

Publication

<1 %

41 Nan Deng, Caixia Liu, Yuxin Tian, Qingan Song, Yandong Niu, Fengfeng Ma. "Assembly processes of rhizosphere and phyllosphere bacterial communities in constructed wetlands created via transformation of rice paddies", Frontiers in Microbiology, 2024

Publication

<1 %

42 V. Sládeček, H.A. Hawkes, J.S. Alabaster, I. Daubner, I. Nöthlich, J.F. de L.G. Solbé, D. Uhlmann. "BIOLOGICAL EXAMINATION", Elsevier BV, 1982

Publication

<1 %

43 neptjournal.com

Internet Source

<1 %

44 repository.karyailmiah.trisakti.ac.id

Internet Source

<1 %

45

Internet Source

&lt;1 %

46

Eka Wardhani, Yunus Primalaksono.  
"Pollutant Index Method in Determining the  
Water Quality Status of the Cimahi River in  
West Bandung Regency", IOP Conference  
Series: Earth and Environmental Science,  
2022

Publication

&lt;1 %

47

"Algae as a Natural Solution for Challenges in  
Water-Food-Energy Nexus", Springer Science  
and Business Media LLC, 2024

Publication

&lt;1 %

48

Shamyung O Ongh, Asha Taterao Landge,  
Karankumar Ramteke, Simanku Borah et al.  
"Fish community structure in accordance with  
environmental signatures in tropical river  
ecosystem, Eastern Himalayan eco-region",  
Springer Science and Business Media LLC,  
2024

Publication

&lt;1 %

49

[doi.org](https://doi.org)

Internet Source

&lt;1 %

50

Submitted to Badan PPSDM Kesehatan  
Kementerian Kesehatan

Student Paper

&lt;1 %

---

Exclude quotes      On

Exclude matches      Off

Exclude bibliography      On



# Pollution Level of the Downstream Area of Paguyaman River, Gorontalo, Indonesia: A Study Based on the Microalgae Distribution and Saprobic Index

GRADEMARK REPORT

FINAL GRADE

GENERAL COMMENTS

/0

PAGE 1

PAGE 2

PAGE 3

PAGE 4

PAGE 5

PAGE 6

PAGE 7

PAGE 8

PAGE 9

PAGE 10

PAGE 11