

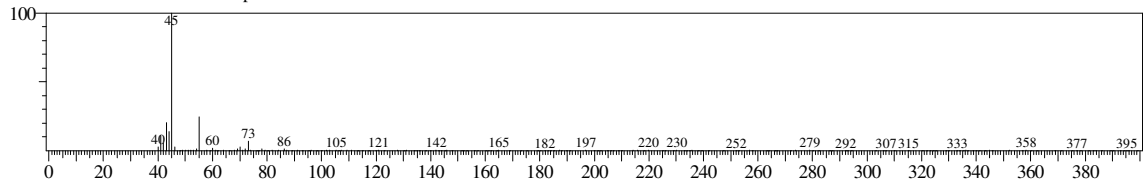
Library

<< Target >>

Line#:1 R.Time:2.220(Scan#:445) MassPeaks:182

RawMode:Averaged 2.215-2.225(444-446) BasePeak:45.10(12067)

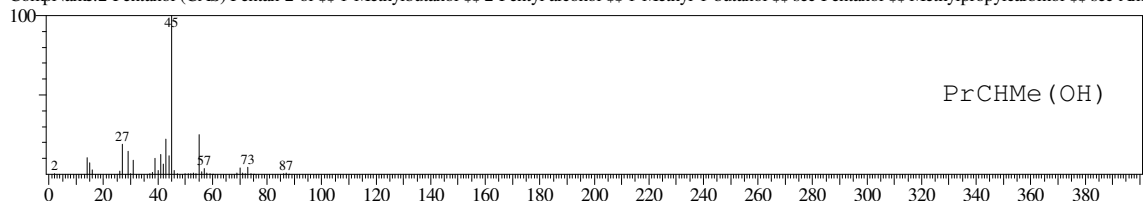
BG Mode:Calc. from Peak Group 1 - Event 1



Hit#:1 Entry:4094 Library:WILEY7.LIB

SI:93 Formula:C5 H12 O CAS:6032-29-7 MolWeight:88 RetIndex:0

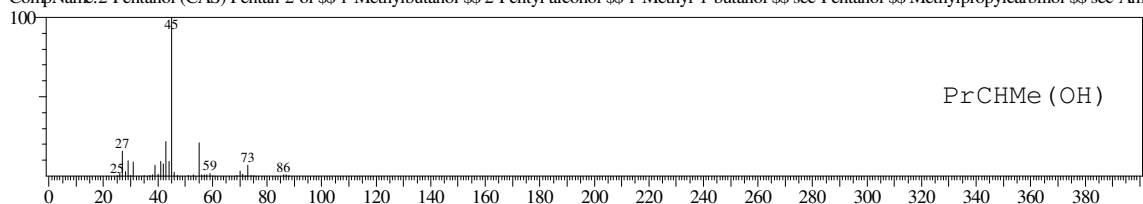
CompName:2-Pentanol (CAS) Pentan-2-ol \$\$ 1-Methylbutanol \$\$ 2-Pentyl alcohol \$\$ 1-Methyl-1-butanol \$\$ sec-Pentanol \$\$ Methylpropylcarbinol \$\$ sec-Am



Hit#:2 Entry:4089 Library:WILEY7.LIB

SI:93 Formula:C5 H12 O CAS:6032-29-7 MolWeight:88 RetIndex:0

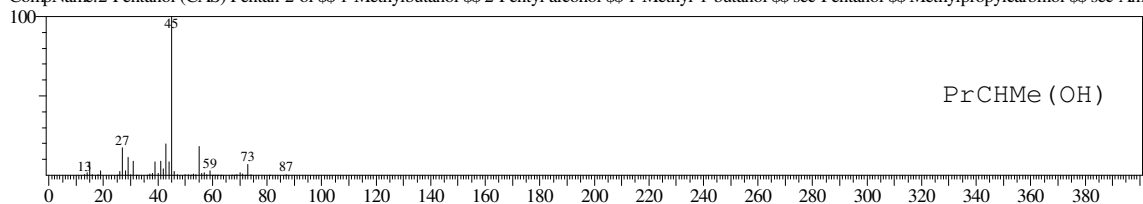
CompName:2-Pentanol (CAS) Pentan-2-ol \$\$ 1-Methylbutanol \$\$ 2-Pentyl alcohol \$\$ 1-Methyl-1-butanol \$\$ sec-Pentanol \$\$ Methylpropylcarbinol \$\$ sec-Am



Hit#:3 Entry:4093 Library:WILEY7.LIB

SI:92 Formula:C5 H12 O CAS:6032-29-7 MolWeight:88 RetIndex:0

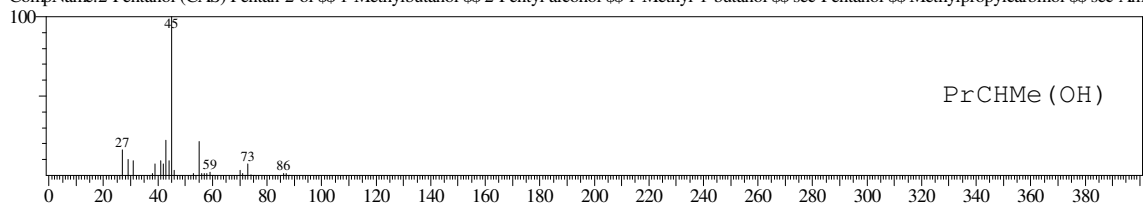
CompName:2-Pentanol (CAS) Pentan-2-ol \$\$ 1-Methylbutanol \$\$ 2-Pentyl alcohol \$\$ 1-Methyl-1-butanol \$\$ sec-Pentanol \$\$ Methylpropylcarbinol \$\$ sec-Am



Hit#:4 Entry:4099 Library:WILEY7.LIB

SI:92 Formula:C5 H12 O CAS:6032-29-7 MolWeight:88 RetIndex:0

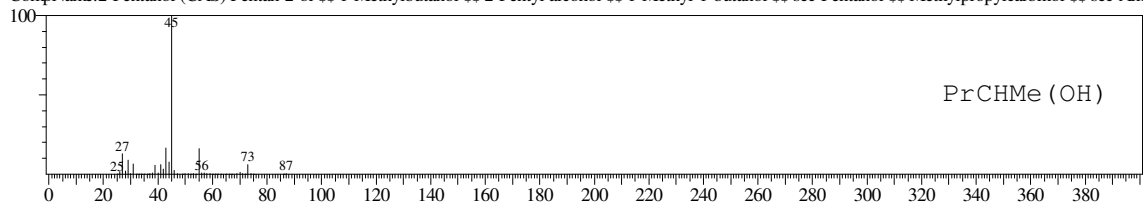
CompName:2-Pentanol (CAS) Pentan-2-ol \$\$ 1-Methylbutanol \$\$ 2-Pentyl alcohol \$\$ 1-Methyl-1-butanol \$\$ sec-Pentanol \$\$ Methylpropylcarbinol \$\$ sec-Am



Hit#:5 Entry:4091 Library:WILEY7.LIB

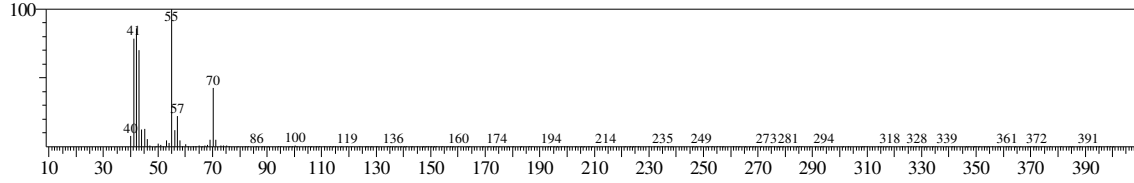
SI:91 Formula:C5 H12 O CAS:6032-29-7 MolWeight:88 RetIndex:0

CompName:2-Pentanol (CAS) Pentan-2-ol \$\$ 1-Methylbutanol \$\$ 2-Pentyl alcohol \$\$ 1-Methyl-1-butanol \$\$ sec-Pentanol \$\$ Methylpropylcarbinol \$\$ sec-Am

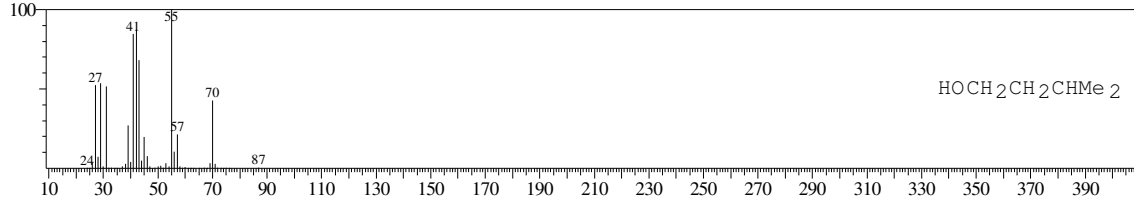


<< Target >>

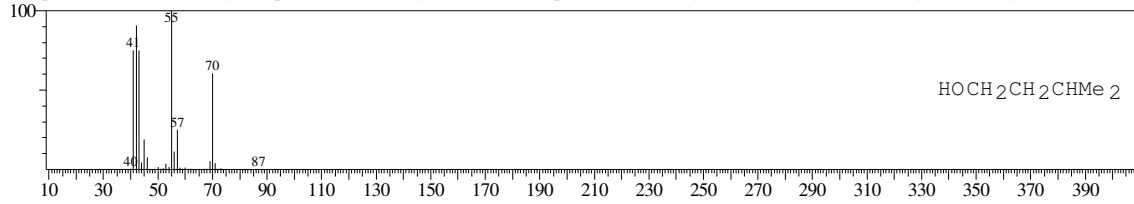
Line#:2 R.Time:2.750(Scan#:551) MassPeaks:209
RawMode:Averaged 2.745-2.755(550-552) BasePeak:55.10(7329)
BG Mode:Calc. from Peak Group 1 - Event 1



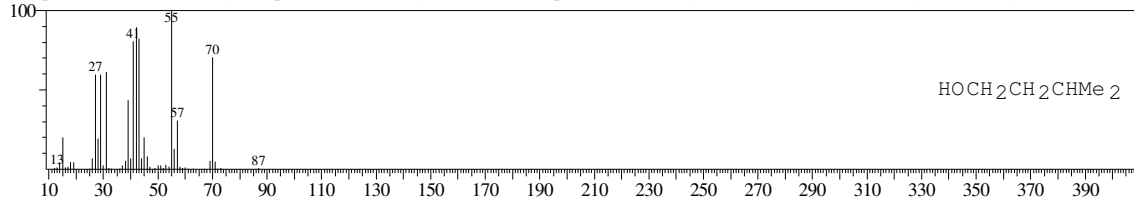
Hit#:1 Entry:4135 Library:WILEY7.LIB
SI:96 Formula:C5 H12 O CAS:123-51-3 MolWeight:88 RetIndex:0
CompName:1-Butanol, 3-methyl- (impure) (CAS) 3-Methyl-1-butanol \$\$ Isopentanol \$\$ 3-Methylbutanol \$\$ Fusel oil \$\$ Isoamylol \$\$ Isoamyl alcohol \$\$ Isobu



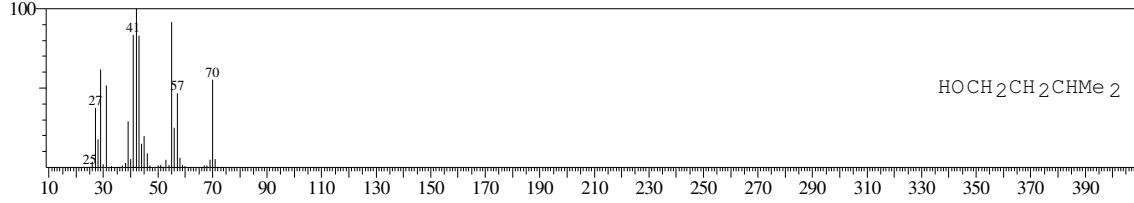
Hit#:2 Entry:4141 Library:WILEY7.LIB
SI:95 Formula:C5 H12 O CAS:123-51-3 MolWeight:88 RetIndex:0
CompName:1-Butanol, 3-methyl- (impure) (CAS) 3-Methyl-1-butanol \$\$ Isopentanol \$\$ 3-Methylbutanol \$\$ Fusel oil \$\$ Isoamylol \$\$ Isoamyl alcohol \$\$ Isobu



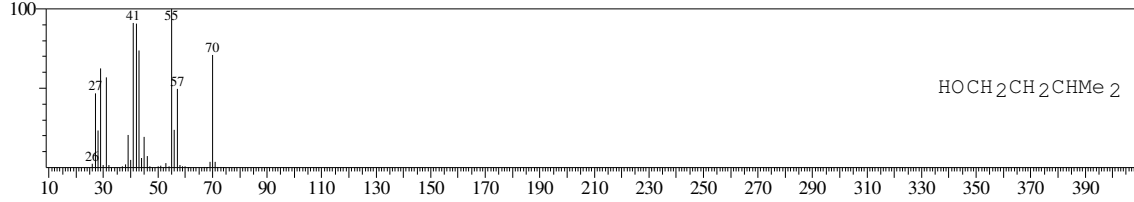
Hit#:3 Entry:4138 Library:WILEY7.LIB
SI:94 Formula:C5 H12 O CAS:123-51-3 MolWeight:88 RetIndex:0
CompName:1-Butanol, 3-methyl- (impure) (CAS) 3-Methyl-1-butanol \$\$ Isopentanol \$\$ 3-Methylbutanol \$\$ Fusel oil \$\$ Isoamylol \$\$ Isoamyl alcohol \$\$ Isobu



Hit#:4 Entry:4136 Library:WILEY7.LIB
SI:93 Formula:C5 H12 O CAS:123-51-3 MolWeight:88 RetIndex:0
CompName:1-Butanol, 3-methyl- (impure) (CAS) 3-Methyl-1-butanol \$\$ Isopentanol \$\$ 3-Methylbutanol \$\$ Fusel oil \$\$ Isoamylol \$\$ Isoamyl alcohol \$\$ Isobu

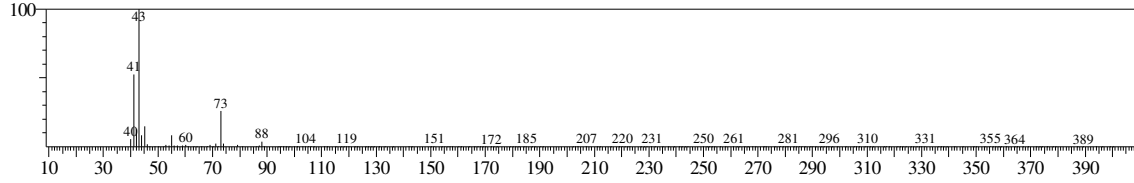


Hit#:5 Entry:4140 Library:WILEY7.LIB
SI:93 Formula:C5 H12 O CAS:123-51-3 MolWeight:88 RetIndex:0
CompName:1-Butanol, 3-methyl- (impure) (CAS) 3-Methyl-1-butanol \$\$ Isopentanol \$\$ 3-Methylbutanol \$\$ Fusel oil \$\$ Isoamylol \$\$ Isoamyl alcohol \$\$ Isobu

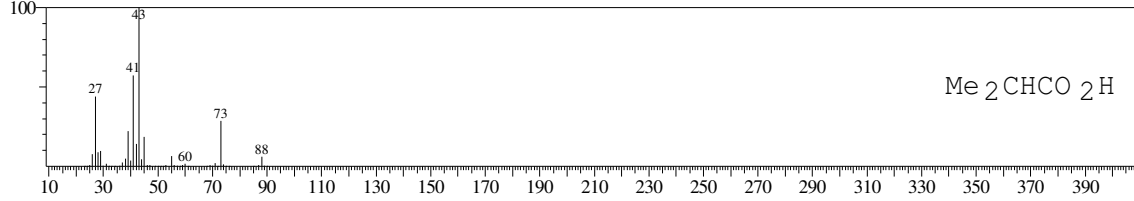


<< Target >>

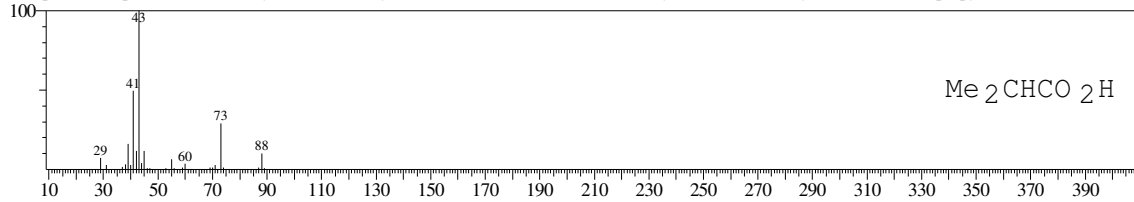
Line#:3 R.Time:3.320(Scan#:665) MassPeaks:204
RawMode:Averaged 3.315-3.325(664-666) BasePeak:43.05(9909)
BG Mode:Calc. from Peak Group 1 - Event 1



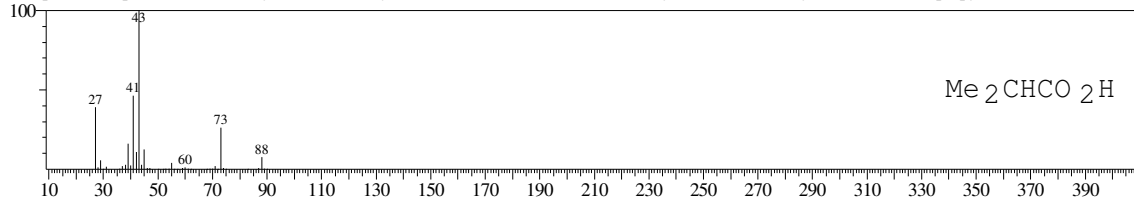
Hit#:1 Entry:3899 Library:WILEY7.LIB
SI:95 Formula:C4 H8 O2 CAS:79-31-2 MolWeight:88 RetIndex:0
CompName:Propanoic acid, 2-methyl- (CAS) Isobutyric acid \$\$ Isobutanoic acid \$\$ iso-Butyric acid \$\$ Dimethylacetic acid \$\$ Isopropylformic acid \$\$ 2-Meth



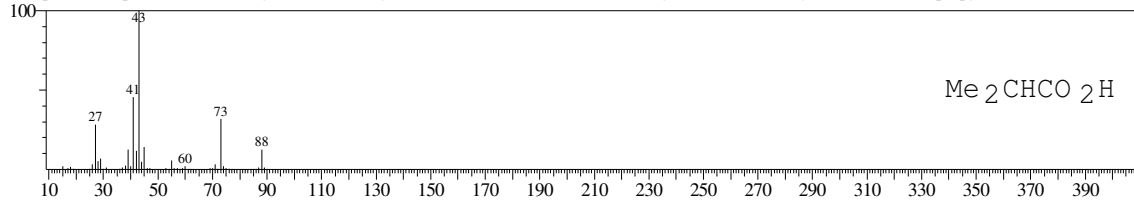
Hit#:2 Entry:3904 Library:WILEY7.LIB
SI:94 Formula:C4 H8 O2 CAS:79-31-2 MolWeight:88 RetIndex:0
CompName:Propanoic acid, 2-methyl- (CAS) Isobutyric acid \$\$ Isobutanoic acid \$\$ iso-Butyric acid \$\$ Dimethylacetic acid \$\$ Isopropylformic acid \$\$ 2-Meth



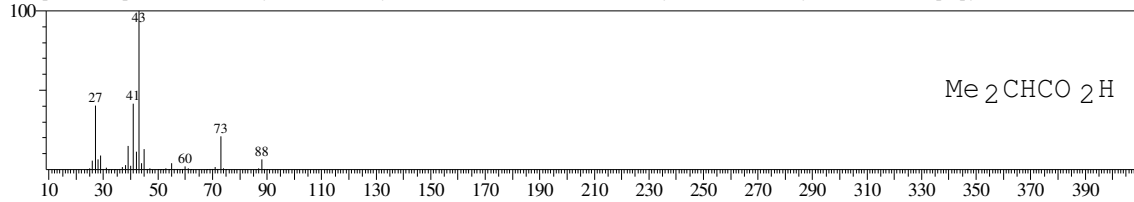
Hit#:3 Entry:3897 Library:WILEY7.LIB
SI:94 Formula:C4 H8 O2 CAS:79-31-2 MolWeight:88 RetIndex:0
CompName:Propanoic acid, 2-methyl- (CAS) Isobutyric acid \$\$ Isobutanoic acid \$\$ iso-Butyric acid \$\$ Dimethylacetic acid \$\$ Isopropylformic acid \$\$ 2-Meth



Hit#:4 Entry:3902 Library:WILEY7.LIB
SI:93 Formula:C4 H8 O2 CAS:79-31-2 MolWeight:88 RetIndex:0
CompName:Propanoic acid, 2-methyl- (CAS) Isobutyric acid \$\$ Isobutanoic acid \$\$ iso-Butyric acid \$\$ Dimethylacetic acid \$\$ Isopropylformic acid \$\$ 2-Meth

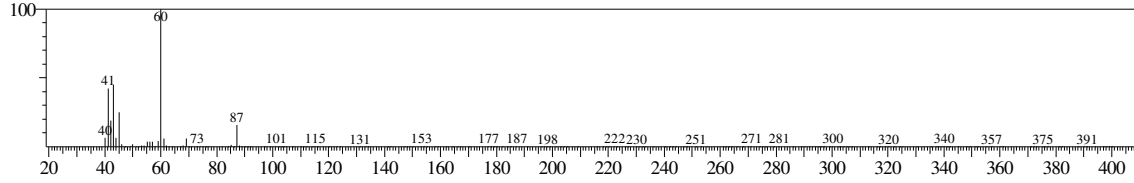


Hit#:5 Entry:3898 Library:WILEY7.LIB
SI:93 Formula:C4 H8 O2 CAS:79-31-2 MolWeight:88 RetIndex:0
CompName:Propanoic acid, 2-methyl- (CAS) Isobutyric acid \$\$ Isobutanoic acid \$\$ iso-Butyric acid \$\$ Dimethylacetic acid \$\$ Isopropylformic acid \$\$ 2-Meth

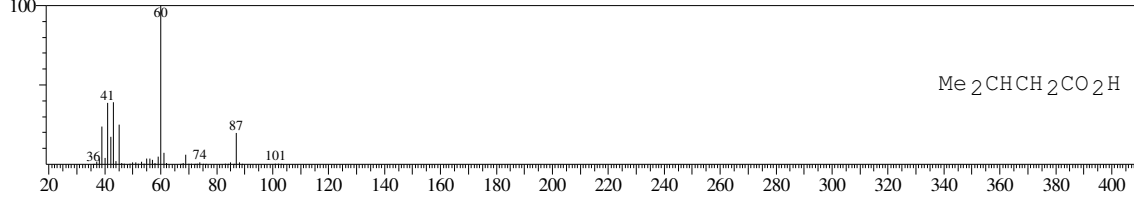


<< Target >>

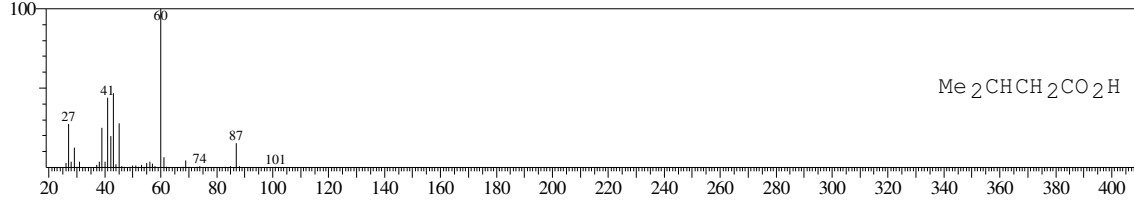
Line#:4 R.Time:5.160(Scan#:1033) MassPeaks:192
RawMode:Averaged 5.155-5.165(1032-1034) BasePeak:60.05(14621)
BG Mode:Calc. from Peak Group 1 - Event 1



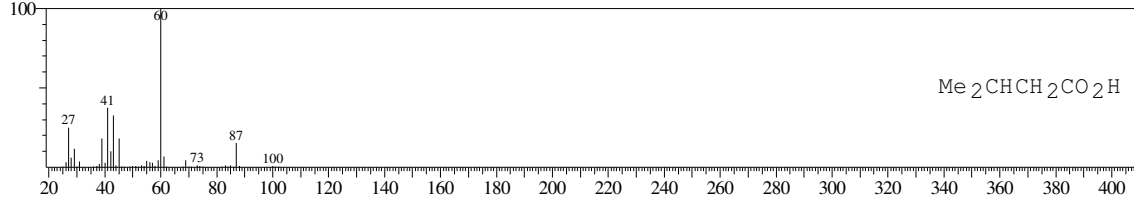
Hit#:1 Entry:7523 Library:WILEY7.LIB
SI:96 Formula:C5 H10 O2 CAS:503-74-2 MolWeight:102 RetIndex:0
CompName:iso-VALERIC ACID \$\$



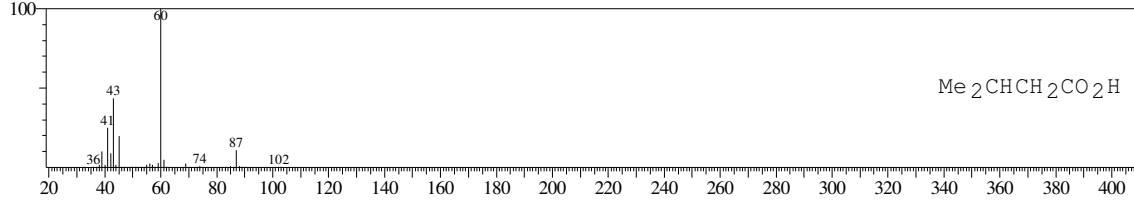
Hit#:2 Entry:7734 Library:WILEY7.LIB
SI:96 Formula:C5 H10 O2 CAS:503-74-2 MolWeight:102 RetIndex:0
CompName:Butanoic acid, 3-methyl- (CAS) Isovaleric acid \$\$ Delphinic acid \$\$ 3-Methylbutyrate \$\$ Isopentanoic acid \$\$ Isopropylacetic acid \$\$ 3-Methylbut



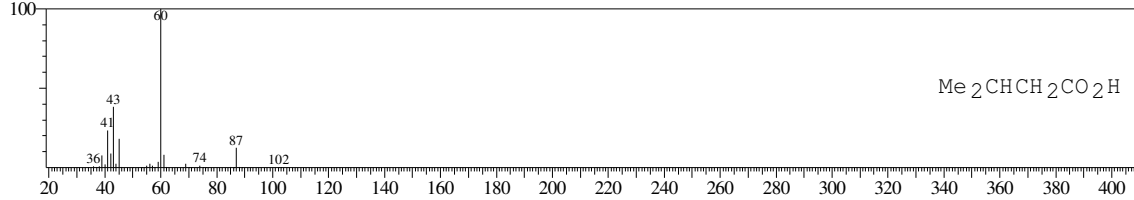
Hit#:3 Entry:7732 Library:WILEY7.LIB
SI:94 Formula:C5 H10 O2 CAS:503-74-2 MolWeight:102 RetIndex:0
CompName:Butanoic acid, 3-methyl- (CAS) Isovaleric acid \$\$ Delphinic acid \$\$ 3-Methylbutyrate \$\$ Isopentanoic acid \$\$ Isopropylacetic acid \$\$ 3-Methylbut



Hit#:4 Entry:7733 Library:WILEY7.LIB
SI:93 Formula:C5 H10 O2 CAS:503-74-2 MolWeight:102 RetIndex:0
CompName:Butanoic acid, 3-methyl- (CAS) Isovaleric acid \$\$ Delphinic acid \$\$ 3-Methylbutyrate \$\$ Isopentanoic acid \$\$ Isopropylacetic acid \$\$ 3-Methylbut

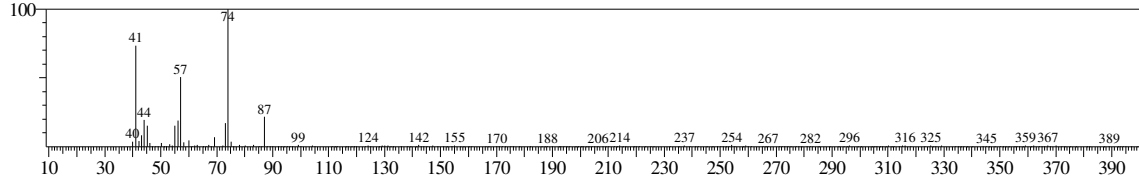


Hit#:5 Entry:7735 Library:WILEY7.LIB
SI:91 Formula:C5 H10 O2 CAS:503-74-2 MolWeight:102 RetIndex:0
CompName:Butanoic acid, 3-methyl- (CAS) Isovaleric acid \$\$ Delphinic acid \$\$ 3-Methylbutyrate \$\$ Isopentanoic acid \$\$ Isopropylacetic acid \$\$ 3-Methylbut

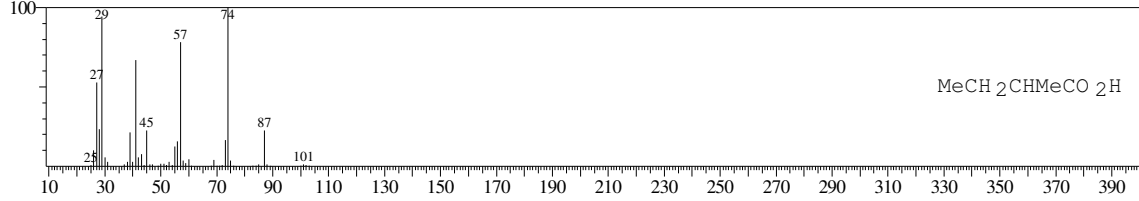


<< Target >>

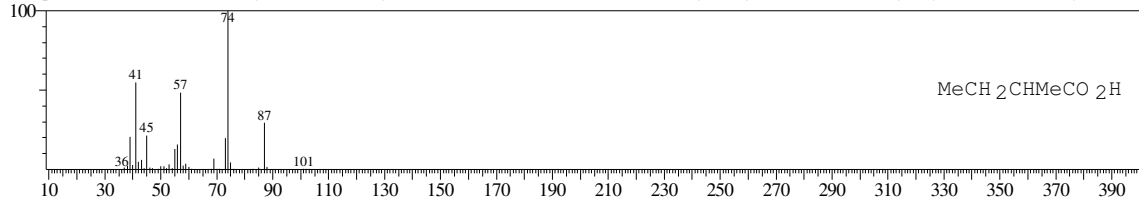
Line#:5 R.Time:5.350(Scan#:1071) MassPeaks:229
RawMode:Averaged 5.345-5.355(1070-1072) BasePeak:74.05(4357)
BG Mode:Calc. from Peak Group 1 - Event 1



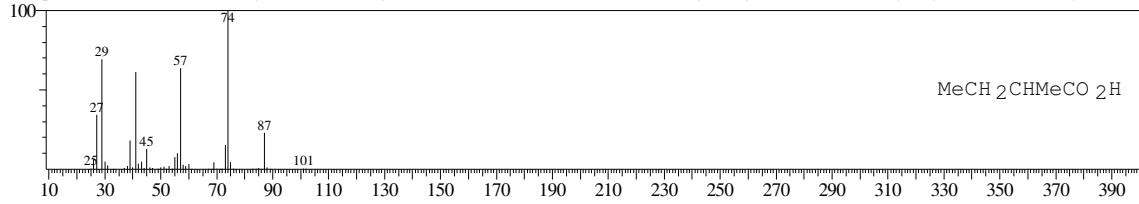
Hit#:1 Entry:7725 Library:WILEY7.LIB
SI:90 Formula:C5 H10 O2 CAS:116-53-0 MolWeight:102 RetIndex:0
CompName:Butanoic acid, 2-methyl- (CAS) 2-Methylbutanoic acid \$\$ Active valeric acid \$\$ Ethylmethylacetic acid \$\$ Methyllethylacetic acid \$\$ Butyric acid.



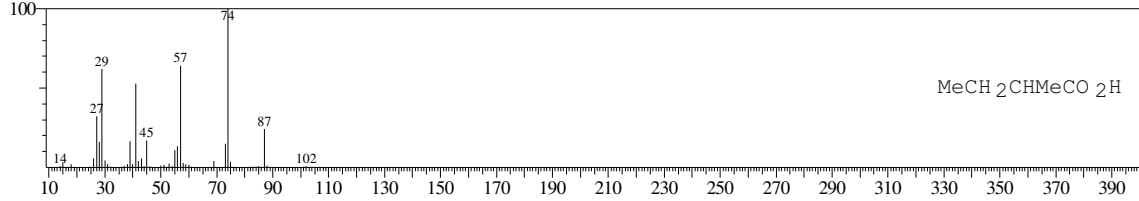
Hit#:2 Entry:7728 Library:WILEY7.LIB
SI:90 Formula:C5 H10 O2 CAS:116-53-0 MolWeight:102 RetIndex:0
CompName:Butanoic acid, 2-methyl- (CAS) 2-Methylbutanoic acid \$\$ Active valeric acid \$\$ Ethylmethylacetic acid \$\$ Methyllethylacetic acid \$\$ Butyric acid.



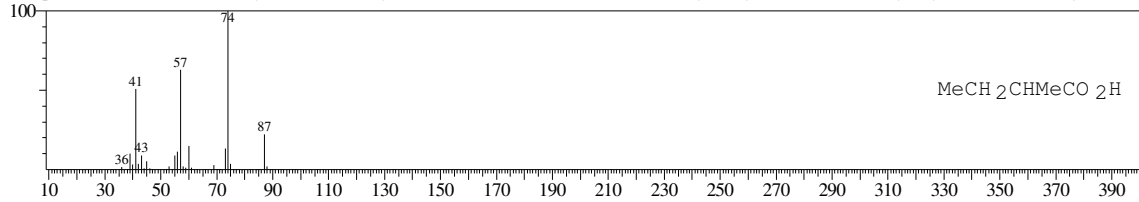
Hit#:3 Entry:7726 Library:WILEY7.LIB
SI:90 Formula:C5 H10 O2 CAS:116-53-0 MolWeight:102 RetIndex:0
CompName:Butanoic acid, 2-methyl- (CAS) 2-Methylbutanoic acid \$\$ Active valeric acid \$\$ Ethylmethylacetic acid \$\$ Methyllethylacetic acid \$\$ Butyric acid.



Hit#:4 Entry:7727 Library:WILEY7.LIB
SI:89 Formula:C5 H10 O2 CAS:116-53-0 MolWeight:102 RetIndex:0
CompName:Butanoic acid, 2-methyl- (CAS) 2-Methylbutanoic acid \$\$ Active valeric acid \$\$ Ethylmethylacetic acid \$\$ Methyllethylacetic acid \$\$ Butyric acid.

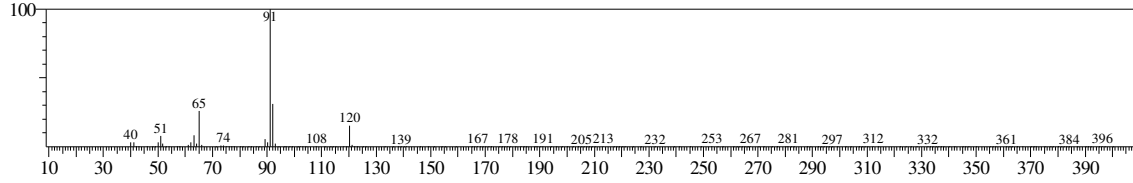


Hit#:5 Entry:7729 Library:WILEY7.LIB
SI:88 Formula:C5 H10 O2 CAS:116-53-0 MolWeight:102 RetIndex:0
CompName:Butanoic acid, 2-methyl- (CAS) 2-Methylbutanoic acid \$\$ Active valeric acid \$\$ Ethylmethylacetic acid \$\$ Methyllethylacetic acid \$\$ Butyric acid.

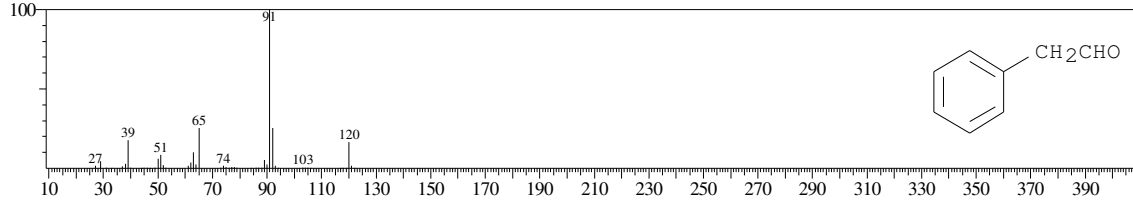


<< Target >>

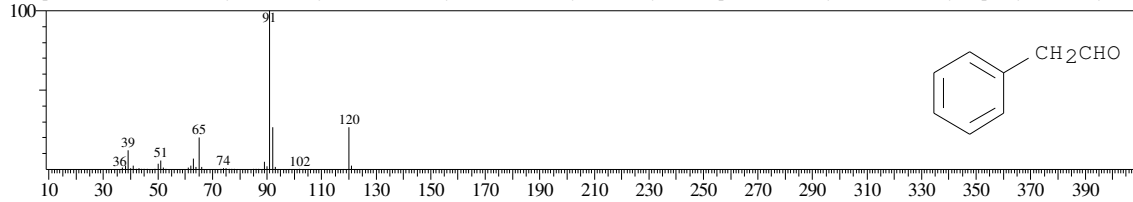
Line#6 R.Time:8.950(Scan#:1791) MassPeaks:197
RawMode:Averaged 8.945-8.955(1790-1792) BasePeak:91.10(12650)
BG Mode:Calc. from Peak Group 1 - Event 1



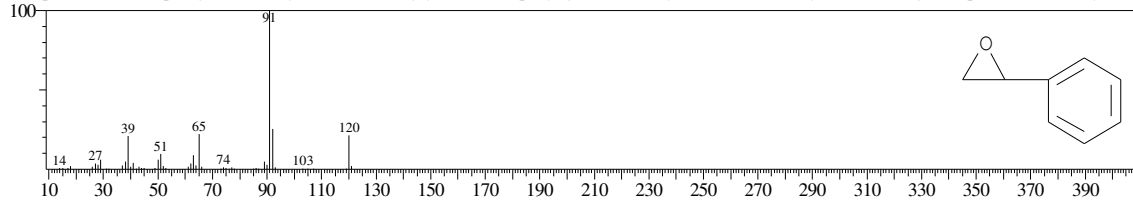
Hit#:1 Entry:15497 Library:WILEY7.LIB
SI:95 Formula:C8 H8 O CAS:122-78-1 MolWeight:120 RetIndex:0
CompName:Benzenecetaldehyde (CAS) Hyacinthin \$\$ Phenylethanal \$\$ Phenylacetaldehyde \$\$.alpha.-Tolualdehyde \$\$ Acetaldehyde, phenyl- \$\$ Phenylaceti



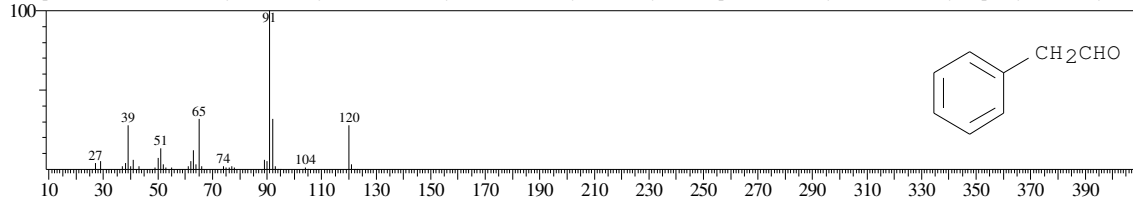
Hit#:2 Entry:15499 Library:WILEY7.LIB
SI:94 Formula:C8 H8 O CAS:122-78-1 MolWeight:120 RetIndex:0
CompName:Benzenecetaldehyde (CAS) Hyacinthin \$\$ Phenylethanal \$\$ Phenylacetaldehyde \$\$.alpha.-Tolualdehyde \$\$ Acetaldehyde, phenyl- \$\$ Phenylaceti



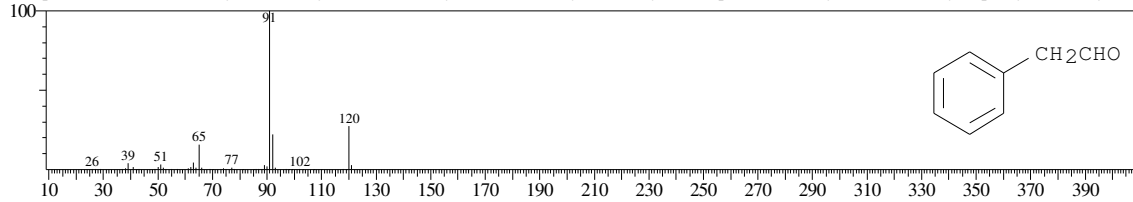
Hit#:3 Entry:15523 Library:WILEY7.LIB
SI:94 Formula:C8 H8 O CAS:96-09-3 MolWeight:120 RetIndex:0
CompName:Oxirane, phenyl- (CAS) Styrene oxide \$\$ Styryl oxide \$\$ Epoxystyrene \$\$ Phenylloxirane \$\$ 1-Phenylloxirane \$\$ Styrene epoxide \$\$ 2-Phenylloxira



Hit#:4 Entry:15498 Library:WILEY7.LIB
SI:92 Formula:C8 H8 O CAS:122-78-1 MolWeight:120 RetIndex:0
CompName:Benzenecetaldehyde (CAS) Hyacinthin \$\$ Phenylethanal \$\$ Phenylacetaldehyde \$\$.alpha.-Tolualdehyde \$\$ Acetaldehyde, phenyl- \$\$ Phenylaceti

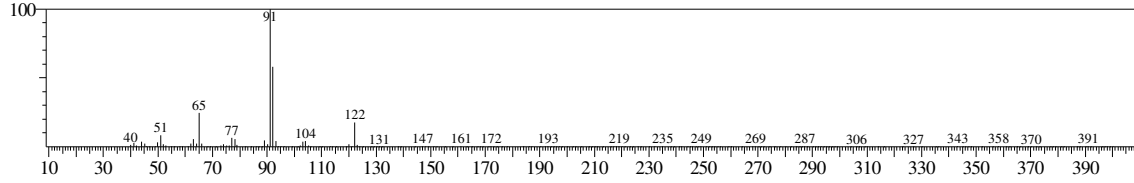


Hit#:5 Entry:15500 Library:WILEY7.LIB
SI:91 Formula:C8 H8 O CAS:122-78-1 MolWeight:120 RetIndex:0
CompName:Benzenecetaldehyde (CAS) Hyacinthin \$\$ Phenylethanal \$\$ Phenylacetaldehyde \$\$.alpha.-Tolualdehyde \$\$ Acetaldehyde, phenyl- \$\$ Phenylaceti

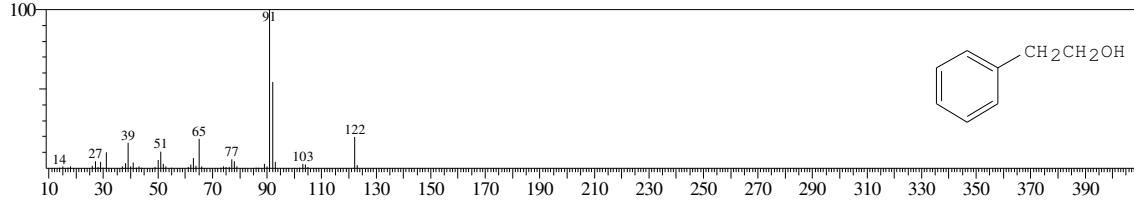


<< Target >>

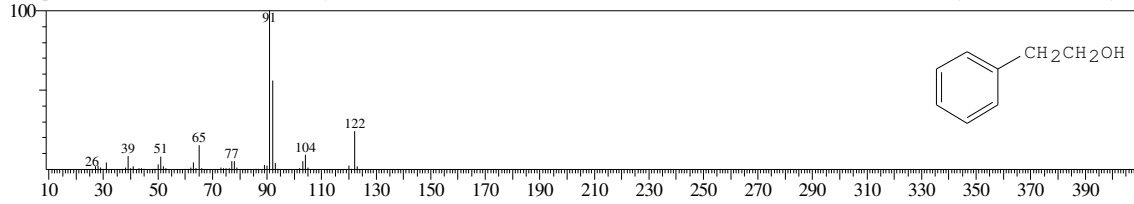
Line#:7 R.Time:10.195(Scan#:2040) MassPeaks:211
RawMode:Averaged 10.190-10.200(2039-2041) BasePeak:91.10(10707)
BG Mode:Calc. from Peak Group 1 - Event 1



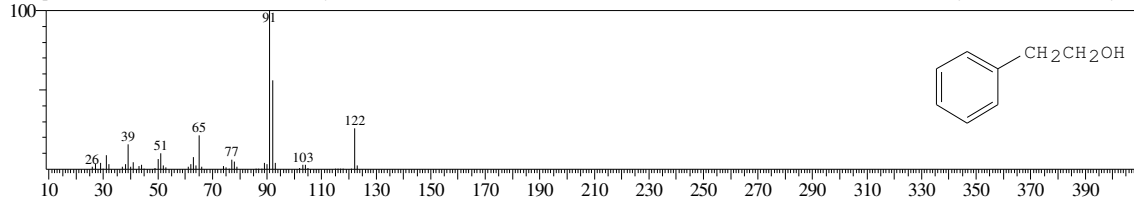
Hit#:1 Entry:16553 Library:WILEY7.LIB
SI:95 Formula:C8 H10 O CAS:60-12-8 MolWeight:122 RetIndex:0
CompName:Benzeethanol (CAS) Phenethyl alcohol \$\$ PEA \$\$ PHENETHYL ALCOLHOL \$\$ Phenethanol \$\$.beta.-PEA \$\$ Benzyl carbinol \$\$ 2-Phenyleth



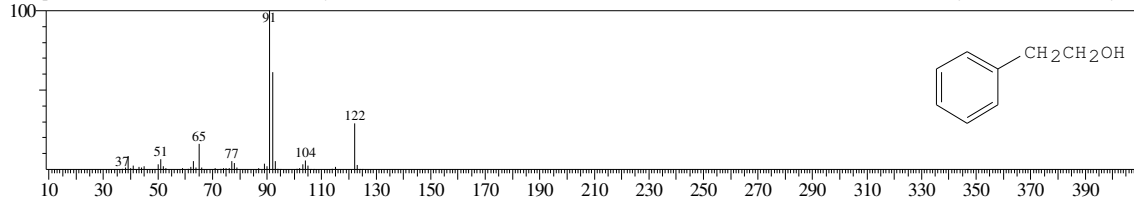
Hit#:2 Entry:16560 Library:WILEY7.LIB
SI:95 Formula:C8 H10 O CAS:60-12-8 MolWeight:122 RetIndex:0
CompName:Benzeethanol (CAS) Phenethyl alcohol \$\$ PEA \$\$ PHENETHYL ALCOLHOL \$\$ Phenethanol \$\$.beta.-PEA \$\$ Benzyl carbinol \$\$ 2-Phenyleth



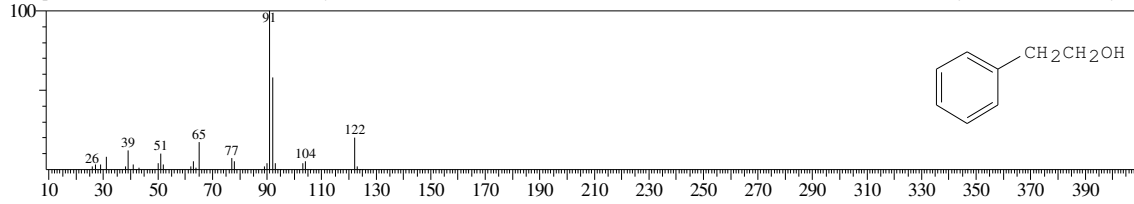
Hit#:3 Entry:16556 Library:WILEY7.LIB
SI:95 Formula:C8 H10 O CAS:60-12-8 MolWeight:122 RetIndex:0
CompName:Benzeethanol (CAS) Phenethyl alcohol \$\$ PEA \$\$ PHENETHYL ALCOLHOL \$\$ Phenethanol \$\$.beta.-PEA \$\$ Benzyl carbinol \$\$ 2-Phenyleth



Hit#:4 Entry:16559 Library:WILEY7.LIB
SI:93 Formula:C8 H10 O CAS:60-12-8 MolWeight:122 RetIndex:0
CompName:Benzeethanol (CAS) Phenethyl alcohol \$\$ PEA \$\$ PHENETHYL ALCOLHOL \$\$ Phenethanol \$\$.beta.-PEA \$\$ Benzyl carbinol \$\$ 2-Phenyleth

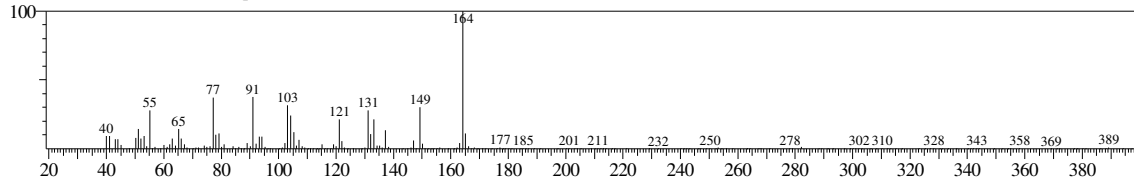


Hit#:5 Entry:16562 Library:WILEY7.LIB
SI:93 Formula:C8 H10 O CAS:60-12-8 MolWeight:122 RetIndex:0
CompName:Benzeethanol (CAS) Phenethyl alcohol \$\$ PEA \$\$ PHENETHYL ALCOLHOL \$\$ Phenethanol \$\$.beta.-PEA \$\$ Benzyl carbinol \$\$ 2-Phenyleth



<< Target >>

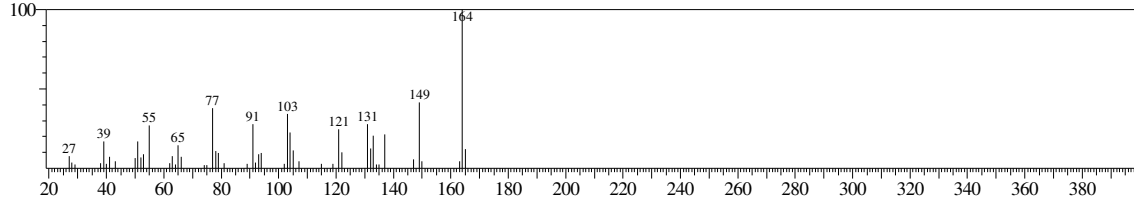
Line#:8 R.Time:13.715(Scan#:2744) MassPeaks:210
RawMode:Averaged 13.710-13.720(2743-2745) BasePeak:164.10(6040)
BG Mode:Calc. from Peak Group 1 - Event 1



Hit#:1 Entry:52834 Library:WILEY7.LIB

SI:95 Formula:C10 H12 O2 CAS:1941-12-4 MolWeight:164 RetIndex:0

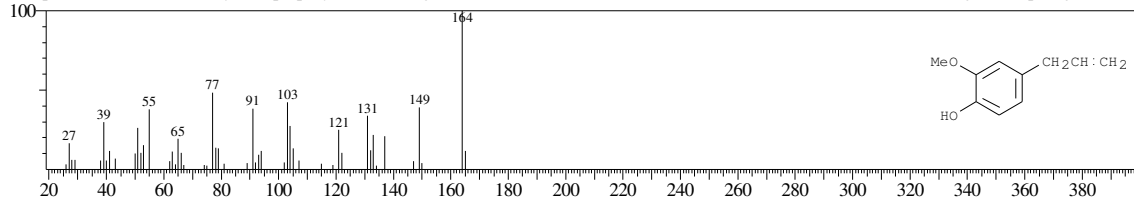
CompName:Phenol, 2-methoxy-3-(2-propenyl)- (CAS) Phenol, 3-allyl-2-methoxy- (CAS) 3-Allylguaiacol \$\$ Guaiacol, 3-allyl- (CAS)



Hit#:2 Entry:53660 Library:WILEY7.LIB

SI:93 Formula:C10 H12 O2 CAS:97-53-0 MolWeight:164 RetIndex:0

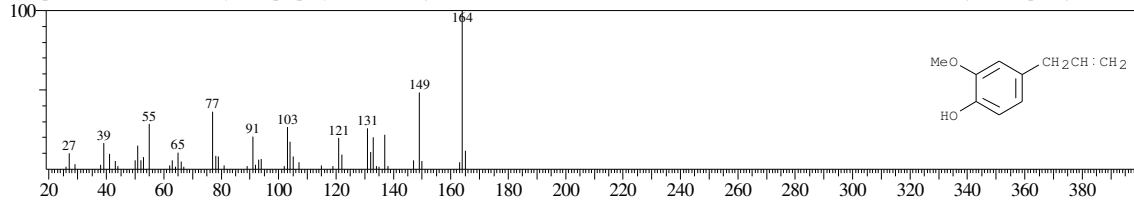
CompName:Phenol, 2-methoxy-4-(2-propenyl)- (CAS) Eugenol \$\$ 1-(2-PROPENYL)-4-HYDROXY-3-METHOXYBENZENE \$\$ Eugenol \$\$ p-Eugenol \$\$ Et



Hit#:3 Entry:53661 Library:WILEY7.LIB

SI:93 Formula:C10 H12 O2 CAS:97-53-0 MolWeight:164 RetIndex:0

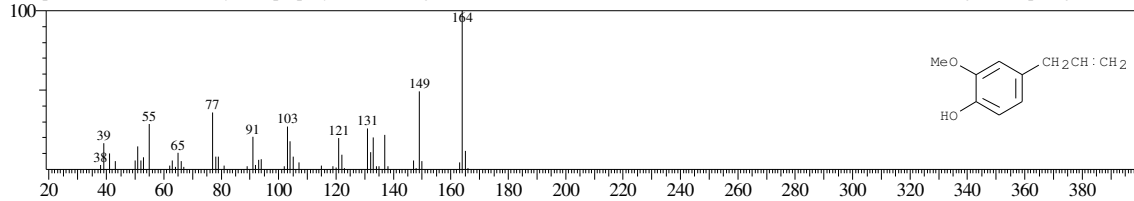
CompName:Phenol, 2-methoxy-4-(2-propenyl)- (CAS) Eugenol \$\$ 1-(2-PROPENYL)-4-HYDROXY-3-METHOXYBENZENE \$\$ Eugenol \$\$ p-Eugenol \$\$ Et



Hit#:4 Entry:53659 Library:WILEY7.LIB

SI:93 Formula:C10 H12 O2 CAS:97-53-0 MolWeight:164 RetIndex:0

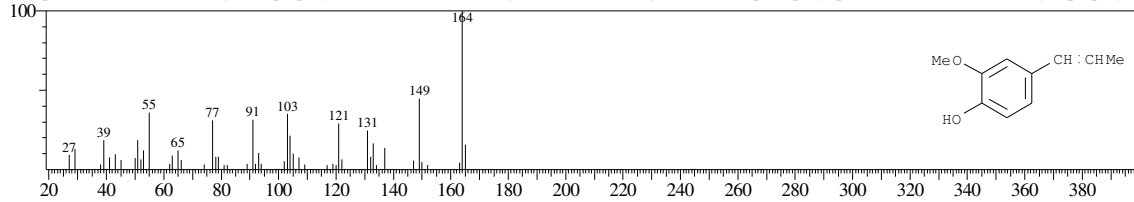
CompName:Phenol, 2-methoxy-4-(2-propenyl)- (CAS) Eugenol \$\$ 1-(2-PROPENYL)-4-HYDROXY-3-METHOXYBENZENE \$\$ Eugenol \$\$ p-Eugenol \$\$ Et



Hit#:5 Entry:53645 Library:WILEY7.LIB

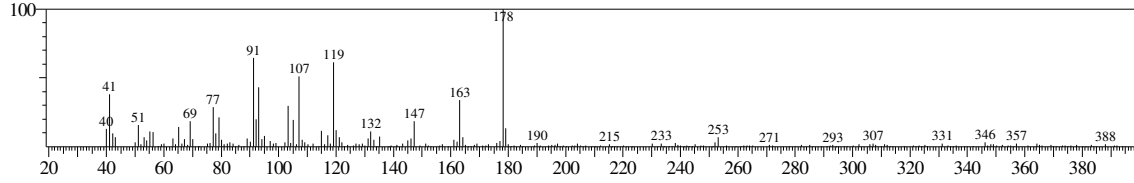
SI:92 Formula:C10 H12 O2 CAS:5932-68-3 MolWeight:164 RetIndex:0

CompName:Phenol, 2-methoxy-4-(1-propenyl)-, (E)- (CAS) (E)-Isoeugenol \$\$ trans-Isoeugenol \$\$ trans-p-Propenylguaiacol \$\$ Phenol,2-methoxy-4-propenyl-,

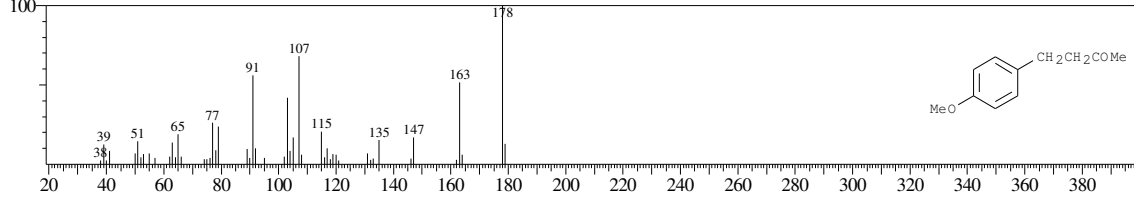


<< Target >>

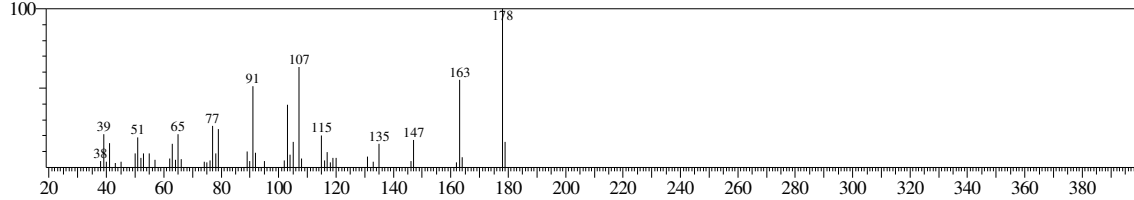
Line#:9 R.Time:15.810(Scan#:3163) MassPeaks:236
RawMode:Averaged 15.805-15.815(3162-3164) BasePeak:178.15(1896)
BG Mode:Calc. from Peak Group 1 - Event 1



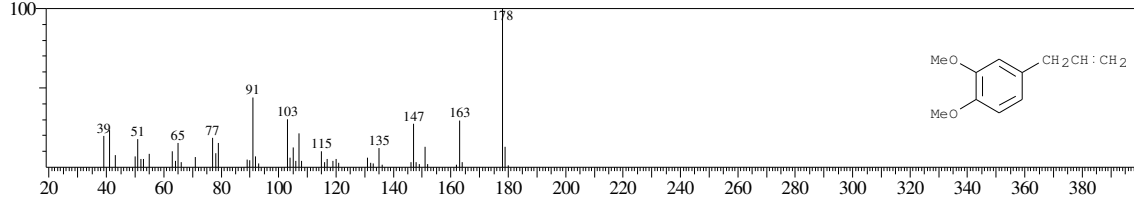
Hit#:1 Entry:68480 Library:WILEY7.LIB
SI:79 Formula:C11 H14 O2 CAS:104-20-1 MolWeight:178 RetIndex:0
CompName:ANISYL ACETONE \$\$ PARA METHOXY PHENYL BUTANONE \$\$



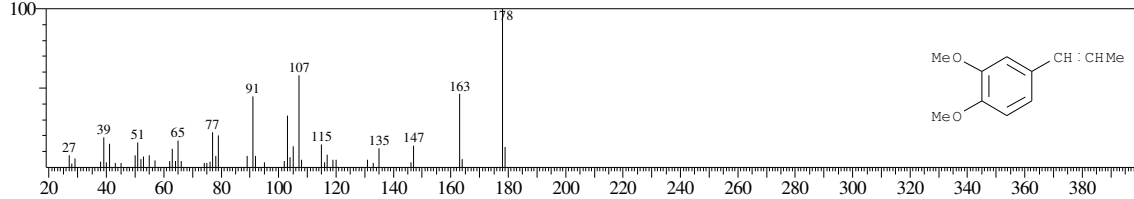
Hit#:2 Entry:68476 Library:WILEY7.LIB
SI:78 Formula:C11 H14 O2 CAS:6379-72-2 MolWeight:178 RetIndex:0
CompName:TRANS-METHYL ISO-EUGENOL \$\$



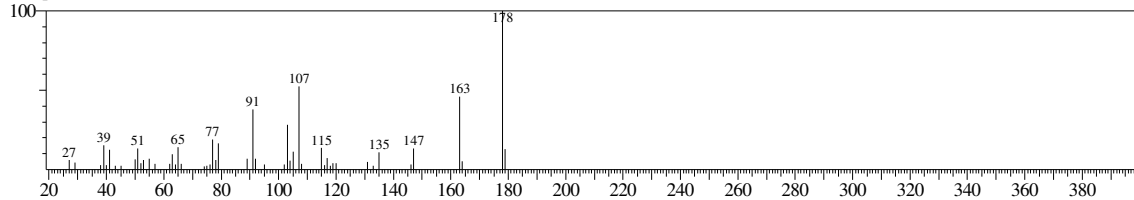
Hit#:3 Entry:69407 Library:WILEY7.LIB
SI:78 Formula:C11 H14 O2 CAS:93-15-2 MolWeight:178 RetIndex:0
CompName:Benzene, 1,2-dimethoxy-4-(2-propenyl)- (CAS) Methyleugenol \$\$ Methyl Eugenol \$\$ 1-Allyl-3,4-dimethoxybenzene \$\$ Ent 21040 \$\$ O-Methyleu



Hit#:4 Entry:68483 Library:WILEY7.LIB
SI:77 Formula:C11 H14 O2 CAS:93-16-3 MolWeight:178 RetIndex:0
CompName:METHYL CIS-ISOEUGENOL \$\$

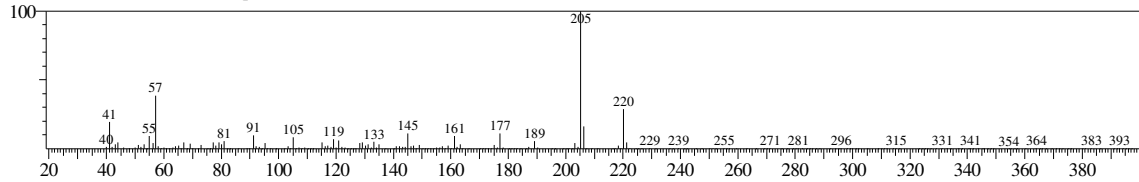


Hit#:5 Entry:68484 Library:WILEY7.LIB
SI:76 Formula:C11 H14 O2 CAS:6379-72-2 MolWeight:178 RetIndex:0
CompName:METHYL TRANS-ISOEUGENOL \$\$



<< Target >>

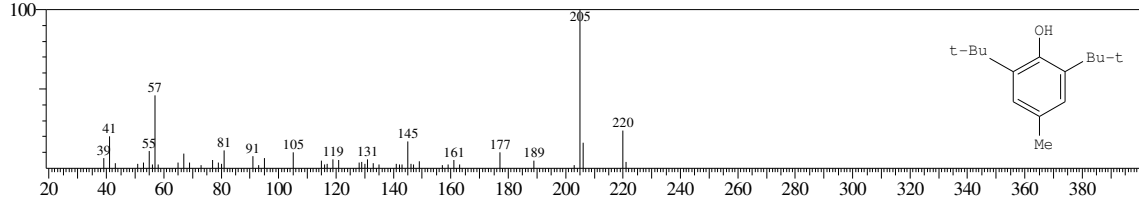
Line#:10 R.Time:16.110(Scan#:3223) MassPeaks:245
RawMode:Averaged 16.105-16.115(3222-3224) BasePeak:205.25(9680)
BG Mode:Calc. from Peak Group 1 - Event 1



Hit#:1 Entry:121010 Library:WILEY7.LIB

SI:93 Formula:C15 H24 O CAS:128-37-0 MolWeight:220 RetIndex:0

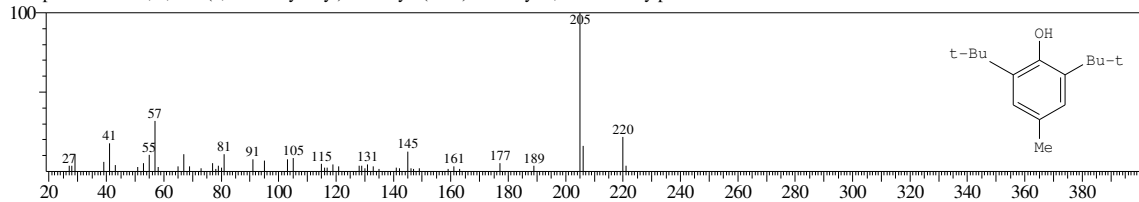
CompName:Phenol, 2,6-bis(1,1-dimethylethyl)-4-methyl- (CAS) 4-Methyl-2,6-di-tert-butylphenol \$\$\$ BHT \$\$\$ P 21 \$\$\$ CAO 3 \$\$\$ AO 29 \$\$\$ CAO 1 \$\$\$ AO 4K \$\$\$



Hit#:2 Entry:121001 Library:WILEY7.LIB

SI:91 Formula:C15 H24 O CAS:128-37-0 MolWeight:220 RetIndex:0

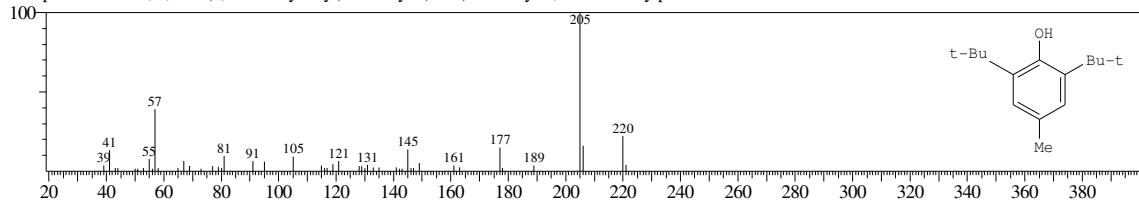
CompName:Phenol, 2,6-bis(1,1-dimethylethyl)-4-methyl- (CAS) 4-Methyl-2,6-di-tert-butylphenol \$\$\$ BHT \$\$\$ P 21 \$\$\$ CAO 3 \$\$\$ AO 29 \$\$\$ CAO 1 \$\$\$ AO 4K \$\$\$



Hit#:3 Entry:121000 Library:WILEY7.LIB

SI:91 Formula:C15 H24 O CAS:128-37-0 MolWeight:220 RetIndex:0

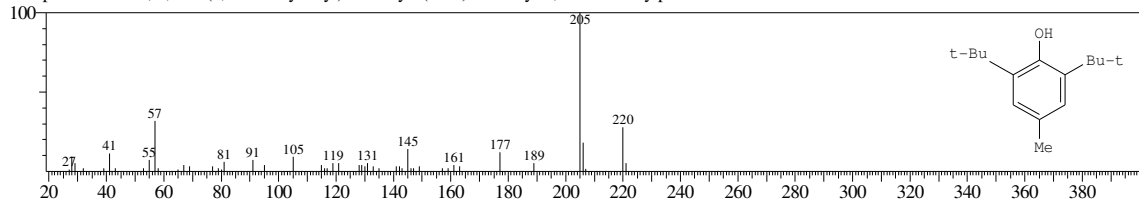
CompName:Phenol, 2,6-bis(1,1-dimethylethyl)-4-methyl- (CAS) 4-Methyl-2,6-di-tert-butylphenol \$\$\$ BHT \$\$\$ P 21 \$\$\$ CAO 3 \$\$\$ AO 29 \$\$\$ CAO 1 \$\$\$ AO 4K \$\$\$



Hit#:4 Entry:120998 Library:WILEY7.LIB

SI:91 Formula:C15 H24 O CAS:128-37-0 MolWeight:220 RetIndex:0

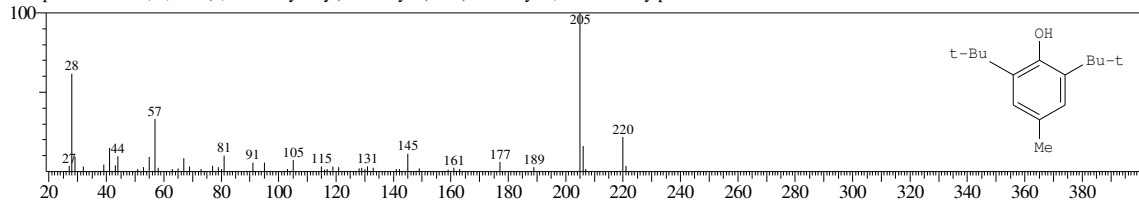
CompName:Phenol, 2,6-bis(1,1-dimethylethyl)-4-methyl- (CAS) 4-Methyl-2,6-di-tert-butylphenol \$\$\$ BHT \$\$\$ P 21 \$\$\$ CAO 3 \$\$\$ AO 29 \$\$\$ CAO 1 \$\$\$ AO 4K \$\$\$



Hit#:5 Entry:121002 Library:WILEY7.LIB

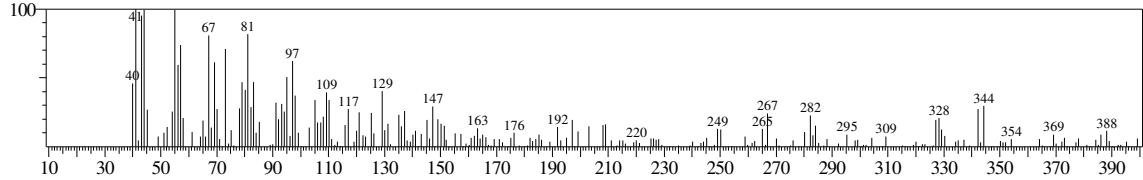
SI:90 Formula:C15 H24 O CAS:128-37-0 MolWeight:220 RetIndex:0

CompName:Phenol, 2,6-bis(1,1-dimethylethyl)-4-methyl- (CAS) 4-Methyl-2,6-di-tert-butylphenol \$\$\$ BHT \$\$\$ P 21 \$\$\$ CAO 3 \$\$\$ AO 29 \$\$\$ CAO 1 \$\$\$ AO 4K \$\$\$

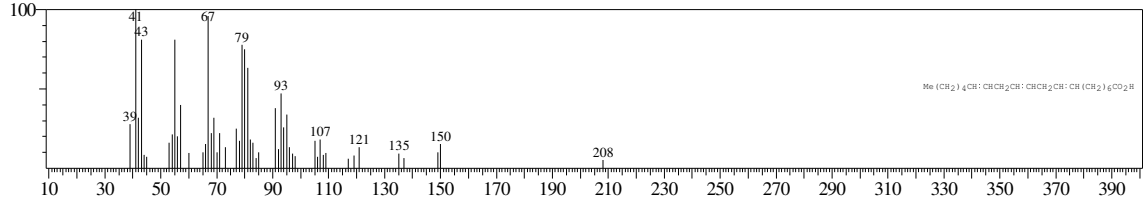


<< Target >>

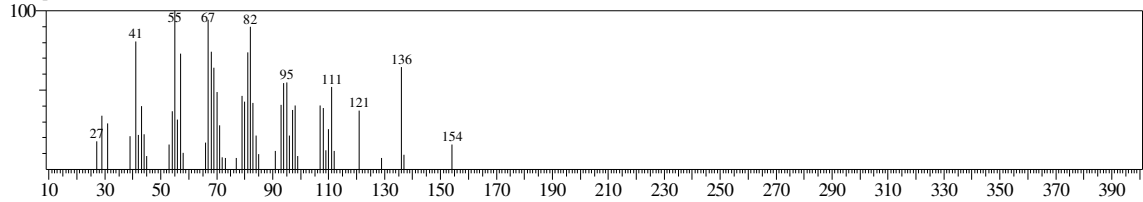
Line#:11 R.Time:22.590(Scan#:4519) MassPeaks:230
RawMode:Averaged 22.585-22.595(4518-4520) BasePeak:41.15(743)
BG Mode:Calc. from Peak Group 1 - Event 1



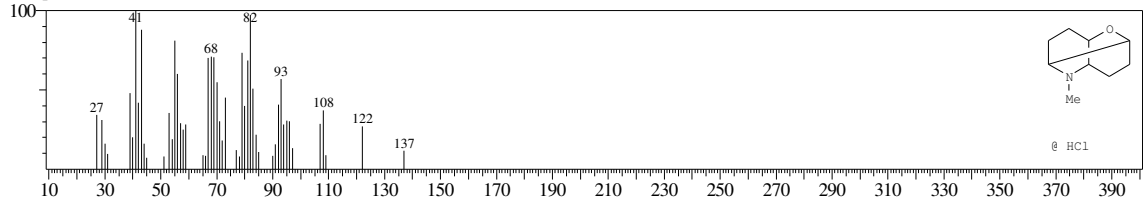
Hit#:1 Entry:217297 Library:WILEY7.LIB
SI:71 Formula:C20 H34 O2 CAS:1783-84-2 MolWeight:306 RetIndex:0
CompName:8,11,14-Eicosatrienoic acid, (Z,Z,Z)- (CAS) CIS,CIS,CIS-8,11,14-EICOSATRIENOIC ACID \$\$ Dihomo- γ -linolenic acid \$\$ cis-8,11,14-Ei



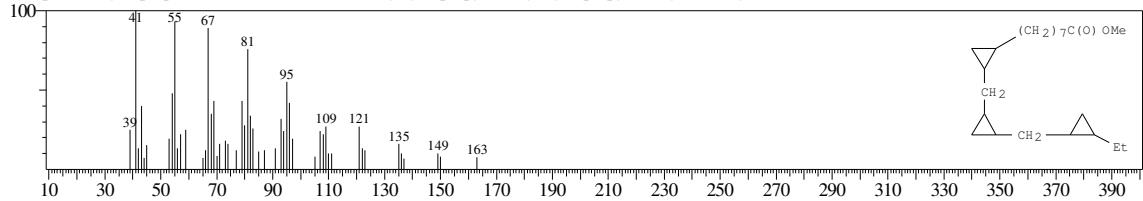
Hit#:2 Entry:63387 Library:WILEY7.LIB
SI:69 Formula:C10 H20 O2 CAS:0-00-0 MolWeight:172 RetIndex:0
CompName:2-(4-HYDROXY-BUTYL)-CYCLOHEXANOL \$\$



Hit#:3 Entry:43245 Library:WILEY7.LIB
SI:69 Formula:C10 H17 D O CAS:63827-34-9 MolWeight:154 RetIndex:0
CompName:N(2)-METHYL-2-AZA-7-OXA-TWISTAN-HYDROCHLORIDE \$\$ 7-METHYL-2-OXA-7-AZA-TRICYCLO[4.4.0.0.3,8]DECANE \$\$ 2,6-Octadi



Hit#:4 Entry:242299 Library:WILEY7.LIB
SI:69 Formula:C22 H38 O2 CAS:10152-71-3 MolWeight:334 RetIndex:0
CompName:Cyclopropanoic acid, 2-[[2-[(2-ethylcyclopropyl)methyl]cyclopropyl]methyl]-, methyl ester (CAS) METHYL 9,10,12,13,15,16-TRIMETHYL



Hit#:5 Entry:299843 Library:WILEY7.LIB
SI:68 Formula:C26 H44 O5 CAS:0-00-0 MolWeight:436 RetIndex:0
CompName:ETHYL ISO-ALLOCHOLATE \$\$

