

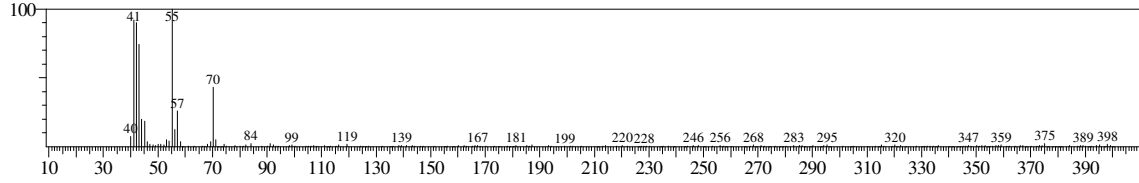
Library

<< Target >>

Line#:1 R.Time:2.750(Scan#:551) MassPeaks:212

RawMode:Averaged 2.745-2.755(550-552) BasePeak:55.15(2980)

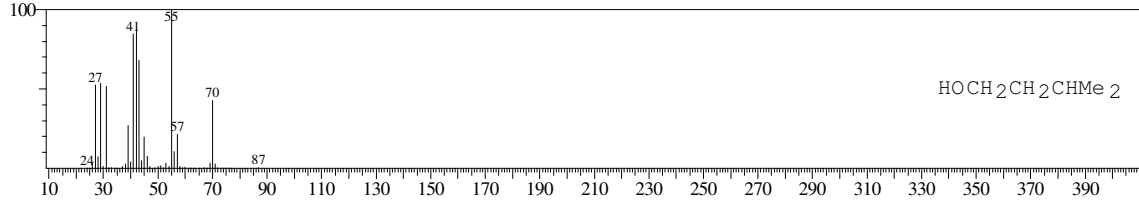
BG Mode:Calc. from Peak Group 1 - Event 1



Hit#:1 Entry:4135 Library:WILEY7.LIB

SI:93 Formula:C5 H12 O CAS:123-51-3 MolWeight:88 RetIndex:0

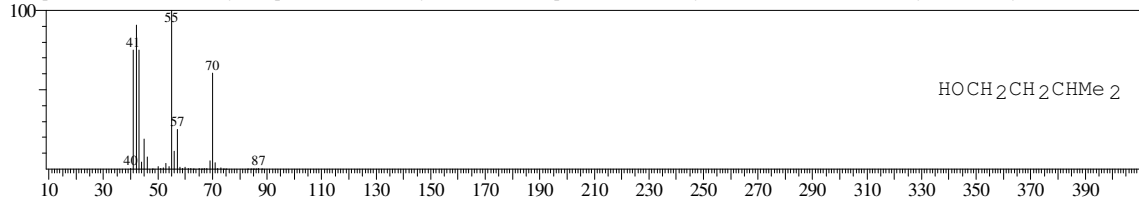
CompName:1-Butanol, 3-methyl- (impure) (CAS) 3-Methyl-1-butanol \$\$ Isopentanol \$\$ 3-Methylbutanol \$\$ Fusel oil \$\$ Isoamylol \$\$ Isoamyl alcohol \$\$ Isobu



Hit#:2 Entry:4141 Library:WILEY7.LIB

SI:92 Formula:C5 H12 O CAS:123-51-3 MolWeight:88 RetIndex:0

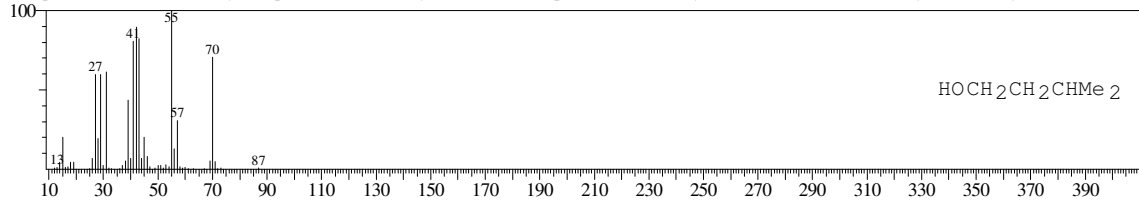
CompName:1-Butanol, 3-methyl- (impure) (CAS) 3-Methyl-1-butanol \$\$ Isopentanol \$\$ 3-Methylbutanol \$\$ Fusel oil \$\$ Isoamylol \$\$ Isoamyl alcohol \$\$ Isobu



Hit#:3 Entry:4138 Library:WILEY7.LIB

SI:92 Formula:C5 H12 O CAS:123-51-3 MolWeight:88 RetIndex:0

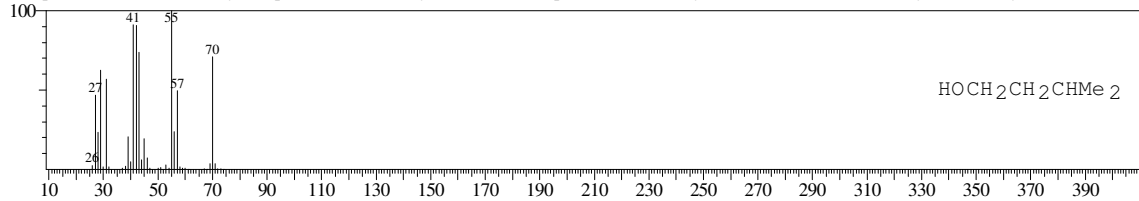
CompName:1-Butanol, 3-methyl- (impure) (CAS) 3-Methyl-1-butanol \$\$ Isopentanol \$\$ 3-Methylbutanol \$\$ Fusel oil \$\$ Isoamylol \$\$ Isoamyl alcohol \$\$ Isobu



Hit#:4 Entry:4140 Library:WILEY7.LIB

SI:92 Formula:C5 H12 O CAS:123-51-3 MolWeight:88 RetIndex:0

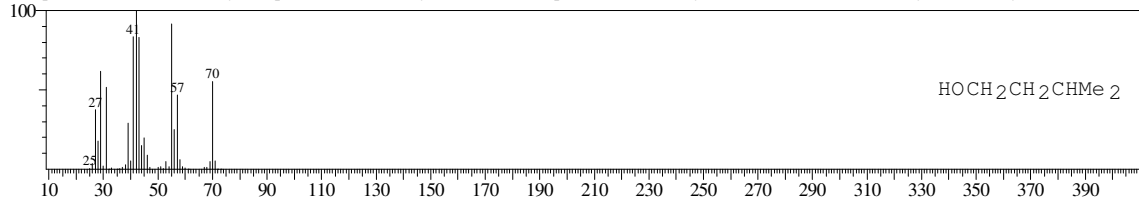
CompName:1-Butanol, 3-methyl- (impure) (CAS) 3-Methyl-1-butanol \$\$ Isopentanol \$\$ 3-Methylbutanol \$\$ Fusel oil \$\$ Isoamylol \$\$ Isoamyl alcohol \$\$ Isobu



Hit#:5 Entry:4136 Library:WILEY7.LIB

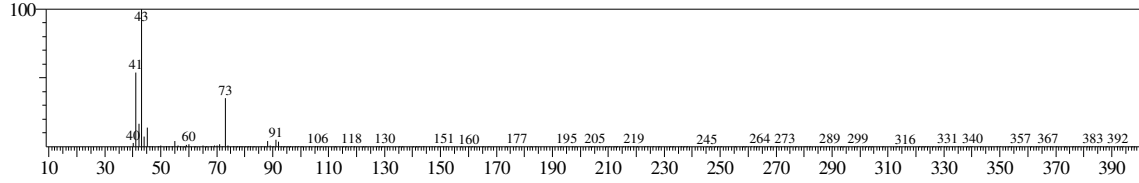
SI:92 Formula:C5 H12 O CAS:123-51-3 MolWeight:88 RetIndex:0

CompName:1-Butanol, 3-methyl- (impure) (CAS) 3-Methyl-1-butanol \$\$ Isopentanol \$\$ 3-Methylbutanol \$\$ Fusel oil \$\$ Isoamylol \$\$ Isoamyl alcohol \$\$ Isobu

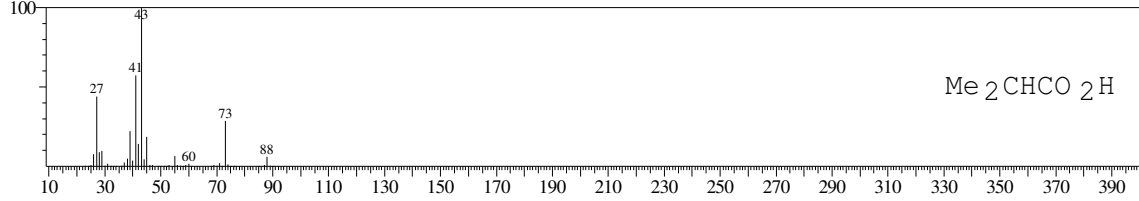


<< Target >>

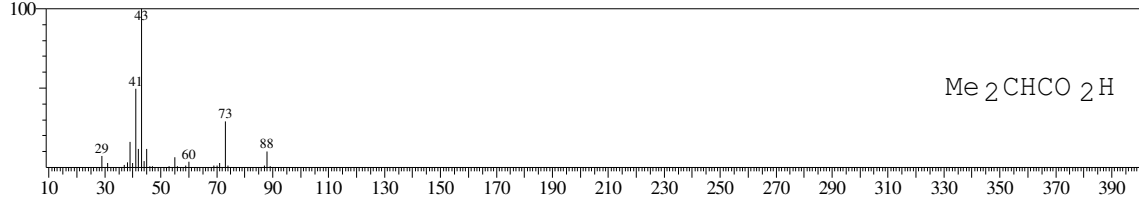
Line#:2 R.Time:3.285(Scan#:658) MassPeaks:193
RawMode:Averaged 3.280-3.290(657-659) BasePeak:43.10(8601)
BG Mode:Calc. from Peak Group 1 - Event 1



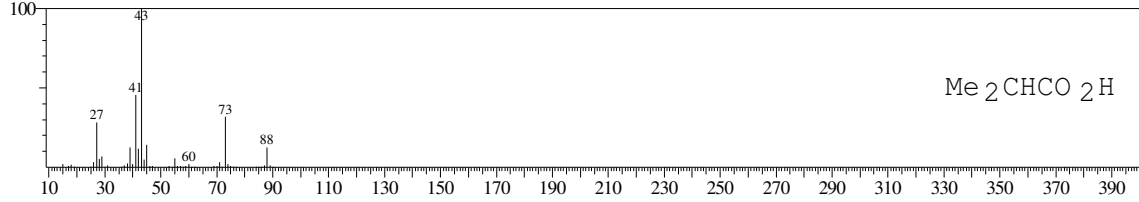
Hit#:1 Entry:3899 Library:WILEY7.LIB
SI:93 Formula:C4 H8 O2 CAS:79-31-2 MolWeight:88 RetIndex:0
CompName:Propanoic acid, 2-methyl- (CAS) Isobutyric acid \$\$ Isobutanoic acid \$\$ iso-Butyric acid \$\$ Dimethylacetic acid \$\$ Isopropylformic acid \$\$ 2-Meth



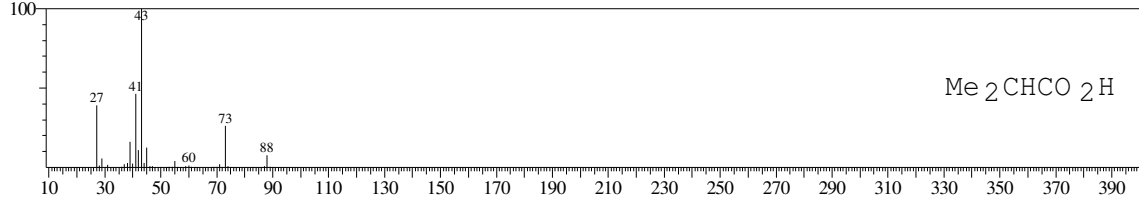
Hit#:2 Entry:3904 Library:WILEY7.LIB
SI:92 Formula:C4 H8 O2 CAS:79-31-2 MolWeight:88 RetIndex:0
CompName:Propanoic acid, 2-methyl- (CAS) Isobutyric acid \$\$ Isobutanoic acid \$\$ iso-Butyric acid \$\$ Dimethylacetic acid \$\$ Isopropylformic acid \$\$ 2-Meth



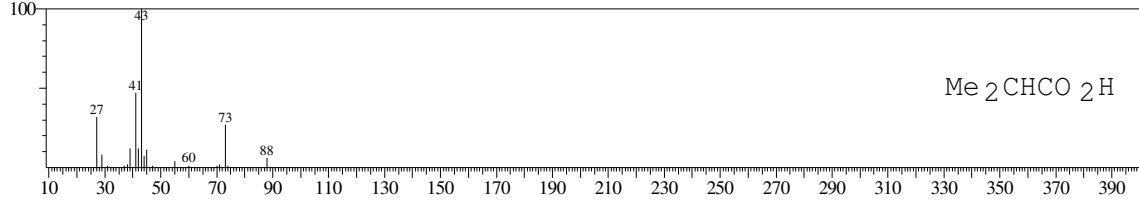
Hit#:3 Entry:3902 Library:WILEY7.LIB
SI:92 Formula:C4 H8 O2 CAS:79-31-2 MolWeight:88 RetIndex:0
CompName:Propanoic acid, 2-methyl- (CAS) Isobutyric acid \$\$ Isobutanoic acid \$\$ iso-Butyric acid \$\$ Dimethylacetic acid \$\$ Isopropylformic acid \$\$ 2-Meth



Hit#:4 Entry:3897 Library:WILEY7.LIB
SI:92 Formula:C4 H8 O2 CAS:79-31-2 MolWeight:88 RetIndex:0
CompName:Propanoic acid, 2-methyl- (CAS) Isobutyric acid \$\$ Isobutanoic acid \$\$ iso-Butyric acid \$\$ Dimethylacetic acid \$\$ Isopropylformic acid \$\$ 2-Meth

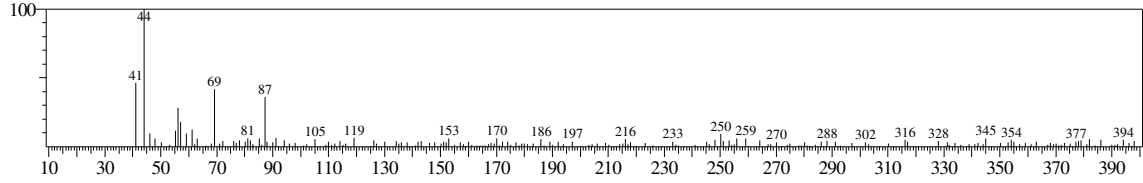


Hit#:5 Entry:3906 Library:WILEY7.LIB
SI:92 Formula:C4 H8 O2 CAS:79-31-2 MolWeight:88 RetIndex:0
CompName:Propanoic acid, 2-methyl- (CAS) Isobutyric acid \$\$ Isobutanoic acid \$\$ iso-Butyric acid \$\$ Dimethylacetic acid \$\$ Isopropylformic acid \$\$ 2-Meth

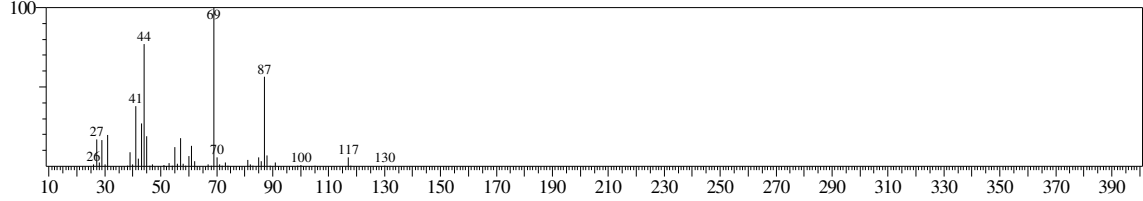


<< Target >>

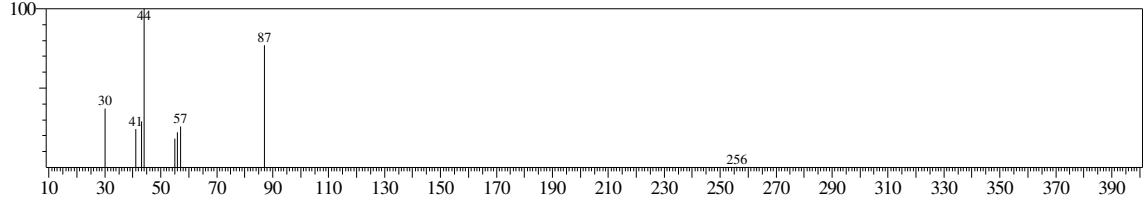
Line#3 R.Time:5.075(Scan#:1016) MassPeaks:203
RawMode:Averaged 5.070-5.080(1015-1017) BasePeak:44.05(674)
BG Mode:Calc. from Peak Group 1 - Event 1



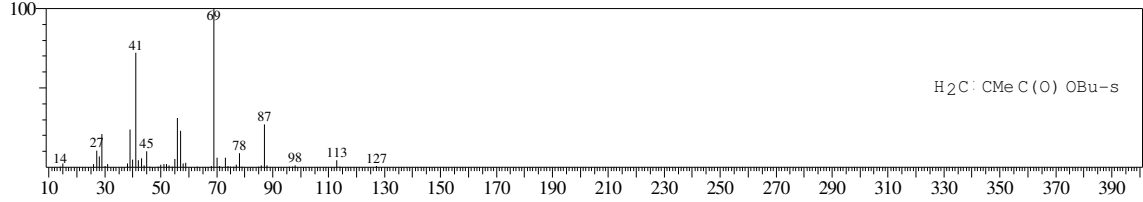
Hit#:1 Entry:36760 Library:WILEY7.LIB
SI:63 Formula:C7 H16 O3 CAS:0-00-0 MolWeight:148 RetIndex:0
CompName:HEPTANE-1,2,3-TRIOLE (PROP-2-YNYLOXYMETHYL)-BENZENE \$\$



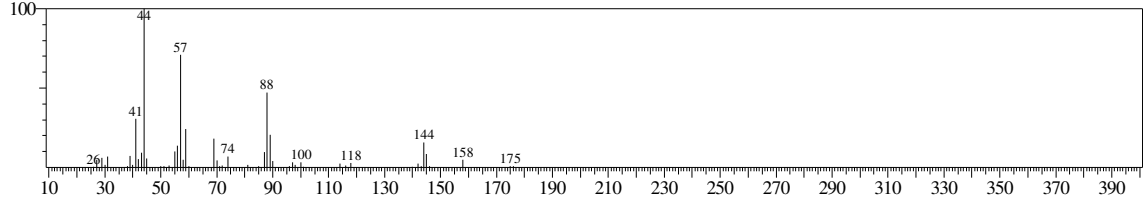
Hit#:2 Entry:164114 Library:WILEY7.LIB
SI:57 Formula:C16 H36 N2 CAS:0-00-0 MolWeight:256 RetIndex:0
CompName:N-(3-Aminopropyl)-2-methyldodecylamine \$\$



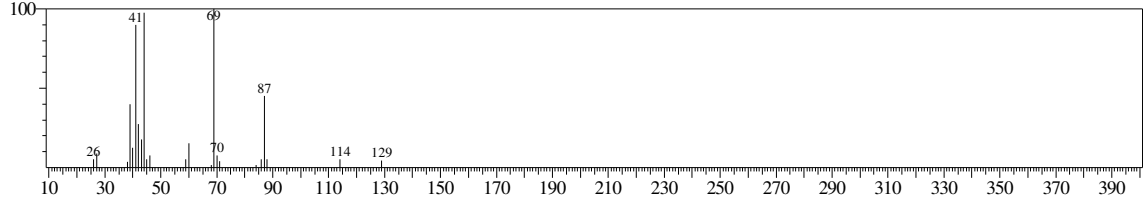
Hit#:3 Entry:30816 Library:WILEY7.LIB
SI:57 Formula:C8 H14 O2 CAS:2998-18-7 MolWeight:142 RetIndex:0
CompName:2-Propenoic acid, 2-methyl-, 1-methylpropyl ester (CAS) sec-Butyl methacrylate \$\$ Methacrylic acid, sec-butyl ester \$\$



Hit#:4 Entry:134106 Library:WILEY7.LIB
SI:57 Formula:C12 H25 N O3 CAS:0-00-0 MolWeight:231 RetIndex:0
CompName:(3S)-HEPTANOL, (2S)-[(TERT.BUTYLOXYCARBONYL)AMINO]- \$\$

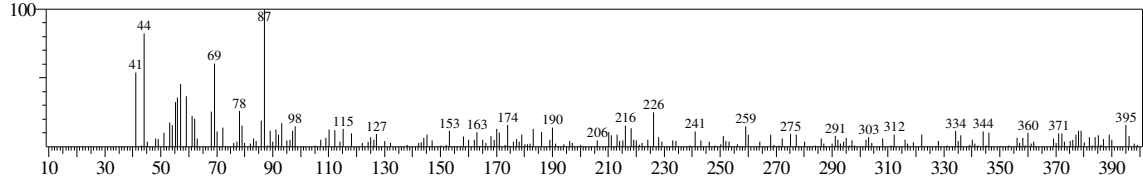


Hit#:5 Entry:19861 Library:WILEY7.LIB
SI:57 Formula:C7 H11 D O2 CAS:0-00-0 MolWeight:128 RetIndex:0
CompName:(monodeuterio)isopropyl metacrylate \$\$

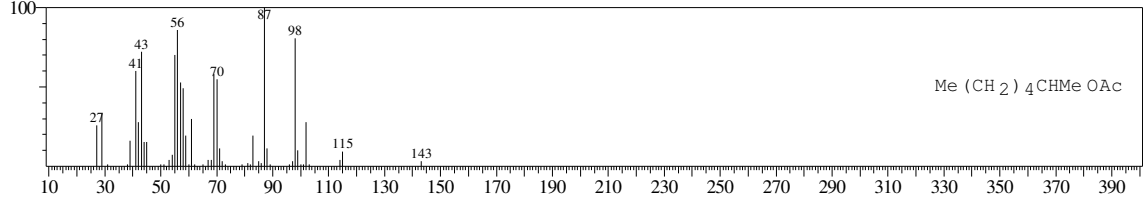


<< Target >>

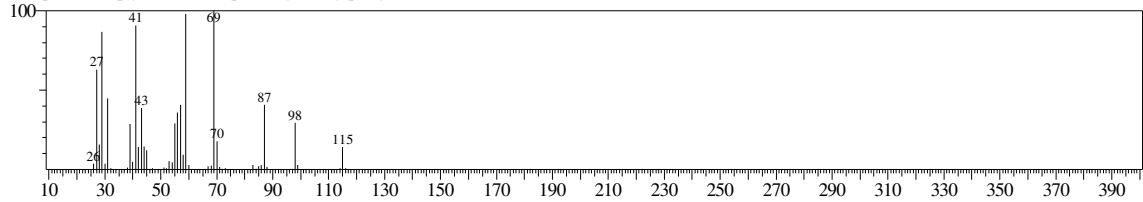
Line#:4 R.Time:5.095(Scan#:1020) MassPeaks:202
RawMode:Averaged 5.090-5.100(1019-1021) BasePeak:87.10(266)
BG Mode:Calc. from Peak Group 1 - Event 1



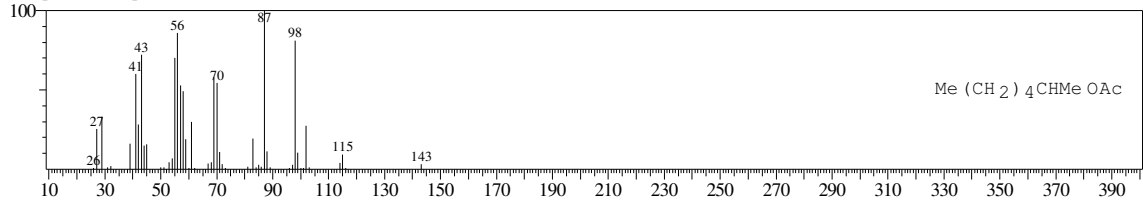
Hit#:1 Entry:47909 Library:WILEY7.LIB
SI:56 Formula:C9 H18 O2 CAS:5921-82-4 MolWeight:158 RetIndex:0
CompName:2-Heptanol, acetate (CAS) 2-HEPTYL ACETATE \$\$ 2-HEPTYL ACETAT \$\$



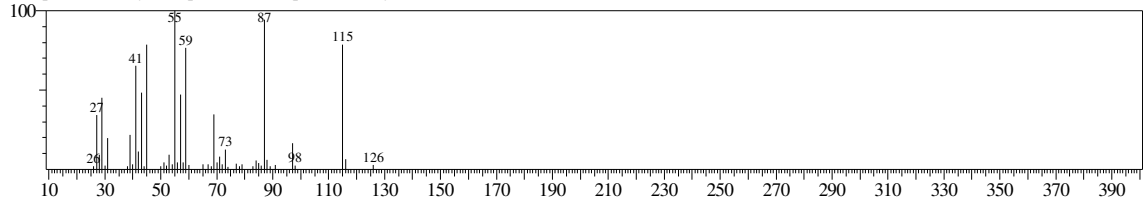
Hit#:2 Entry:32806 Library:WILEY7.LIB
SI:56 Formula:C8 H16 O2 CAS:0-00-0 MolWeight:144 RetIndex:0
CompName:Heptyl formate (probably 2-ethylpentyl formate) \$\$



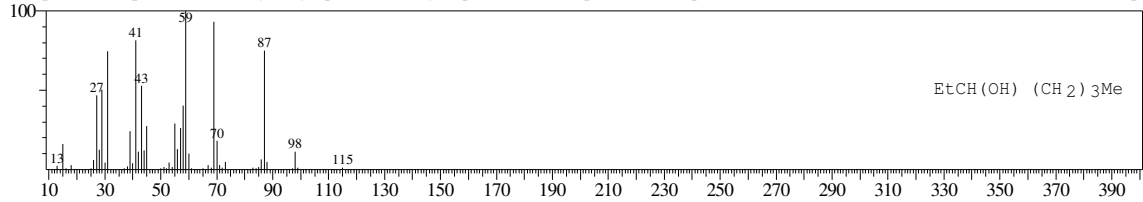
Hit#:3 Entry:47910 Library:WILEY7.LIB
SI:56 Formula:C9 H18 O2 CAS:5921-82-4 MolWeight:158 RetIndex:0
CompName:2-Heptanol, acetate (CAS) 2-HEPTYL ACETATE \$\$ 2-HEPTYL ACETAT \$\$



Hit#:4 Entry:33531 Library:WILEY7.LIB
SI:54 Formula:C9 H20 O CAS:19780-41-7 MolWeight:144 RetIndex:0
CompName:3-Ethyl-3-heptanol \$\$ 3-Heptanol, 3-ethyl- \$\$

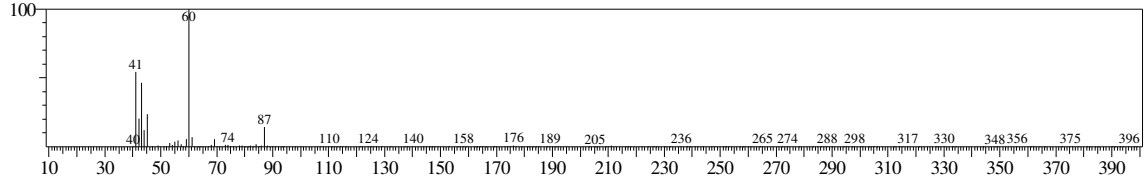


Hit#:5 Entry:13951 Library:WILEY7.LIB
SI:53 Formula:C7 H16 O CAS:589-82-2 MolWeight:116 RetIndex:0
CompName:3-Heptanol (CAS) 3-Hydroxyheptane \$\$ 1-Ethyl-1-pentanol \$\$ n-Heptan-3-ol \$\$ CH3(CH2)3CHOHCH2CH3 \$\$ Dextro levo-3-hept

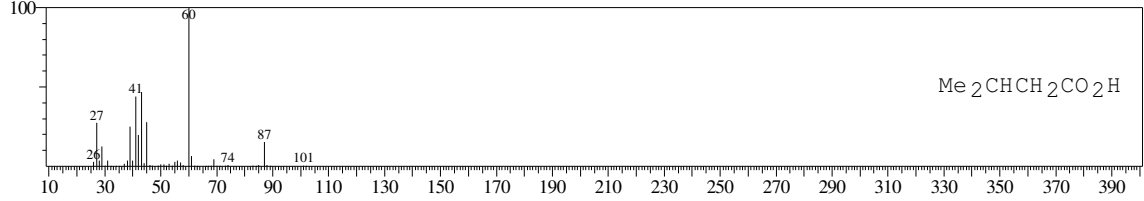


<< Target >>

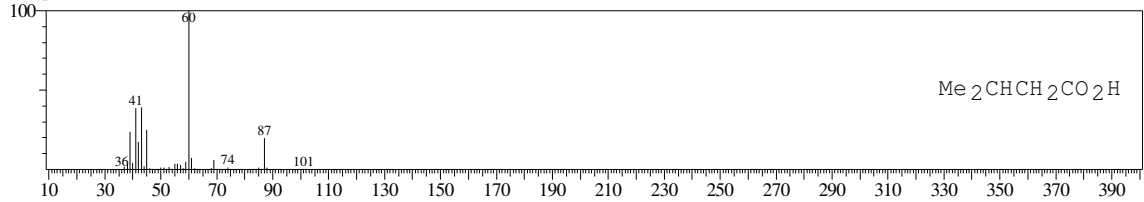
Line#:5 R.Time:5.140(Scan#:1029) MassPeaks:188
RawMode:Averaged 5.135-5.145(1028-1030) BasePeak:60.10(6567)
BG Mode:Calc. from Peak Group 1 - Event 1



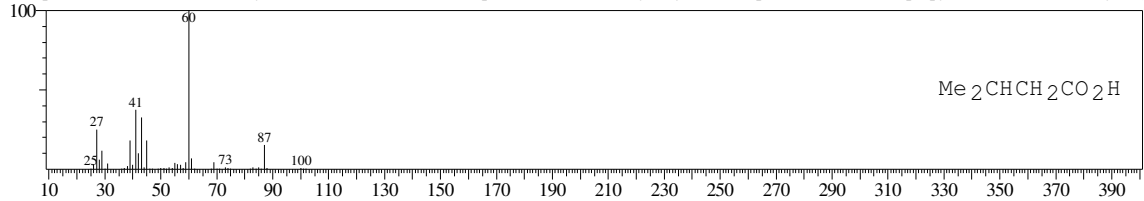
Hit#:1 Entry:7734 Library:WILEY7.LIB
SI:93 Formula:C5 H10 O2 CAS:503-74-2 MolWeight:102 RetIndex:0
CompName:Butanoic acid, 3-methyl- (CAS) Isovaleric acid \$\$ Delphinic acid \$\$ 3-Methylbutyrate \$\$ Isopentanoic acid \$\$ Isopropylacetic acid \$\$ 3-Methylbut



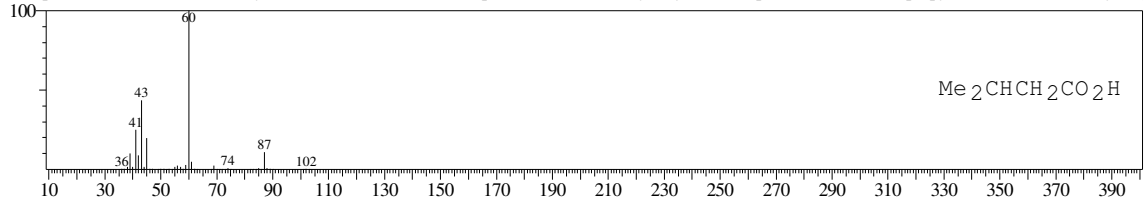
Hit#:2 Entry:7523 Library:WILEY7.LIB
SI:92 Formula:C5 H10 O2 CAS:503-74-2 MolWeight:102 RetIndex:0
CompName:iso-VALERIC ACID \$\$



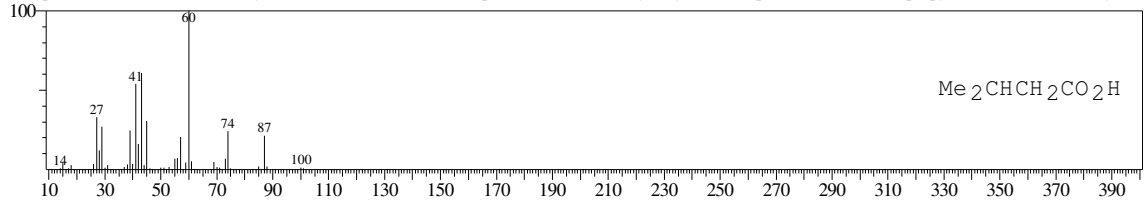
Hit#:3 Entry:7732 Library:WILEY7.LIB
SI:90 Formula:C5 H10 O2 CAS:503-74-2 MolWeight:102 RetIndex:0
CompName:Butanoic acid, 3-methyl- (CAS) Isovaleric acid \$\$ Delphinic acid \$\$ 3-Methylbutyrate \$\$ Isopentanoic acid \$\$ Isopropylacetic acid \$\$ 3-Methylbut



Hit#:4 Entry:7733 Library:WILEY7.LIB
SI:89 Formula:C5 H10 O2 CAS:503-74-2 MolWeight:102 RetIndex:0
CompName:Butanoic acid, 3-methyl- (CAS) Isovaleric acid \$\$ Delphinic acid \$\$ 3-Methylbutyrate \$\$ Isopentanoic acid \$\$ Isopropylacetic acid \$\$ 3-Methylbut

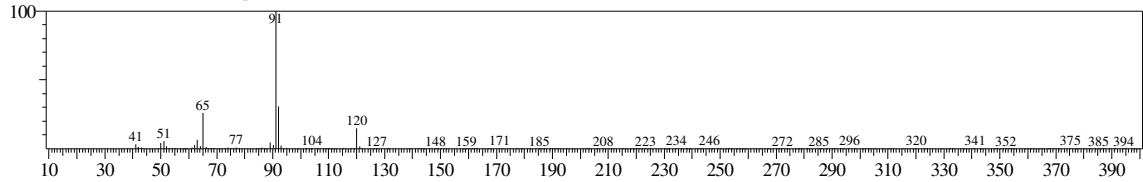


Hit#:5 Entry:7731 Library:WILEY7.LIB
SI:89 Formula:C5 H10 O2 CAS:503-74-2 MolWeight:102 RetIndex:0
CompName:Butanoic acid, 3-methyl- (CAS) Isovaleric acid \$\$ Delphinic acid \$\$ 3-Methylbutyrate \$\$ Isopentanoic acid \$\$ Isopropylacetic acid \$\$ 3-Methylbut



<< Target >>

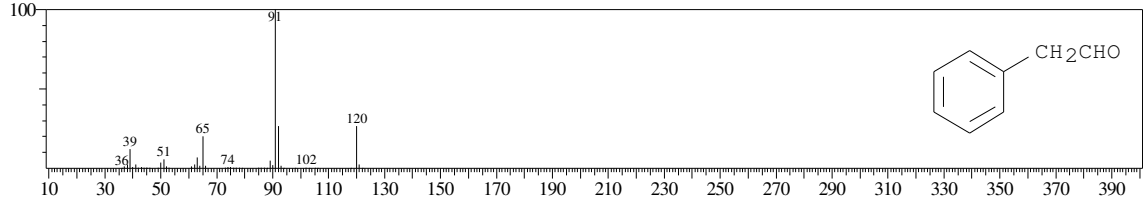
Line#6 R.Time:8.960(Scan#:1793) MassPeaks:197
RawMode:Averaged 8.955-8.965(1792-1794) BasePeak:91.10(14572)
BG Mode:Calc. from Peak Group 1 - Event 1



Hit#1 Entry:15499 Library:WILEY7.LIB

SI:95 Formula:C8 H8 O CAS:122-78-1 MolWeight:120 RetIndex:0

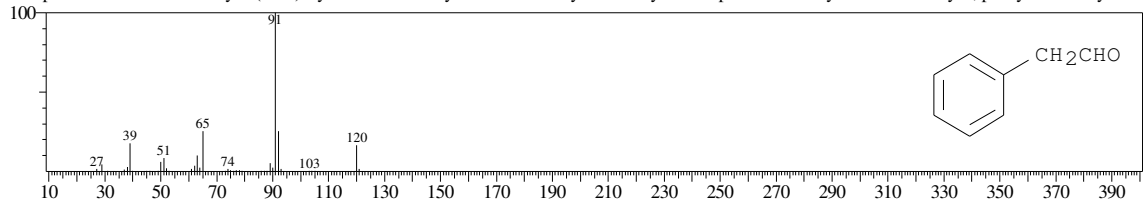
CompName:Benzenecetaldehyde (CAS) Hyacinthin \$\$ Phenylethanal \$\$ Phenylacetaldehyde \$\$.alpha.-Tolualdehyde \$\$ Acetaldehyde, phenyl- \$\$ Phenylaceti



Hit#2 Entry:15497 Library:WILEY7.LIB

SI:94 Formula:C8 H8 O CAS:122-78-1 MolWeight:120 RetIndex:0

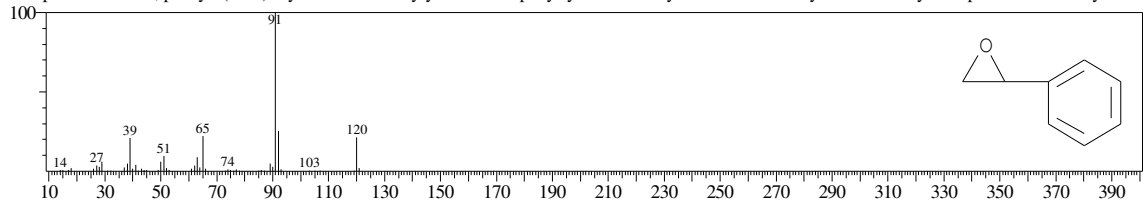
CompName:Benzenecetaldehyde (CAS) Hyacinthin \$\$ Phenylethanal \$\$ Phenylacetaldehyde \$\$.alpha.-Tolualdehyde \$\$ Acetaldehyde, phenyl- \$\$ Phenylaceti



Hit#3 Entry:15523 Library:WILEY7.LIB

SI:94 Formula:C8 H8 O CAS:96-09-3 MolWeight:120 RetIndex:0

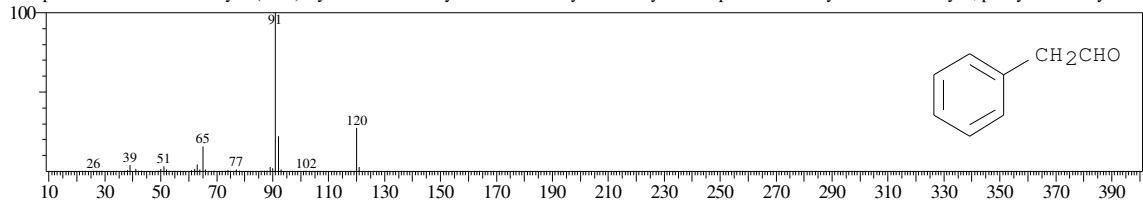
CompName:Oxirane, phenyl- (CAS) Styrene oxide \$\$ Styryl oxide \$\$ Epoxystyrene \$\$ Phenylloxirane \$\$ 1-Phenylloxirane \$\$ Styrene epoxide \$\$ 2-Phenyloxira



Hit#4 Entry:15500 Library:WILEY7.LIB

SI:92 Formula:C8 H8 O CAS:122-78-1 MolWeight:120 RetIndex:0

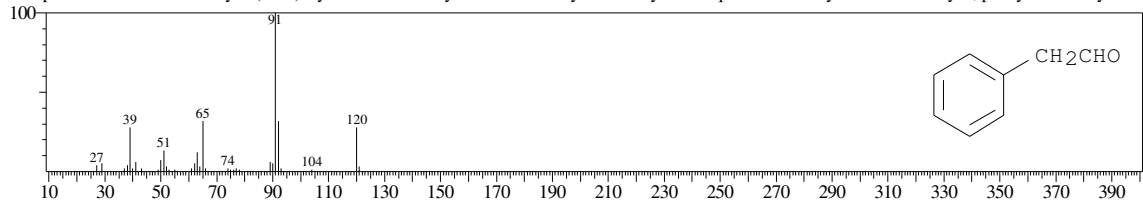
CompName:Benzenecetaldehyde (CAS) Hyacinthin \$\$ Phenylethanal \$\$ Phenylacetaldehyde \$\$.alpha.-Tolualdehyde \$\$ Acetaldehyde, phenyl- \$\$ Phenylaceti



Hit#5 Entry:15498 Library:WILEY7.LIB

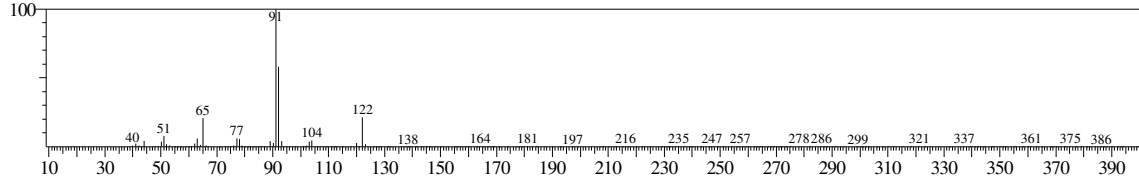
SI:92 Formula:C8 H8 O CAS:122-78-1 MolWeight:120 RetIndex:0

CompName:Benzenecetaldehyde (CAS) Hyacinthin \$\$ Phenylethanal \$\$ Phenylacetaldehyde \$\$.alpha.-Tolualdehyde \$\$ Acetaldehyde, phenyl- \$\$ Phenylaceti

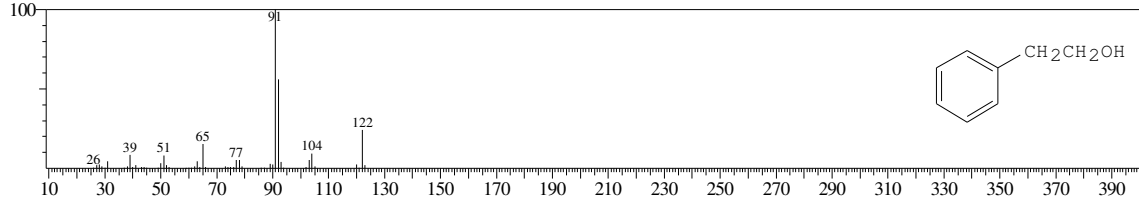


<< Target >>

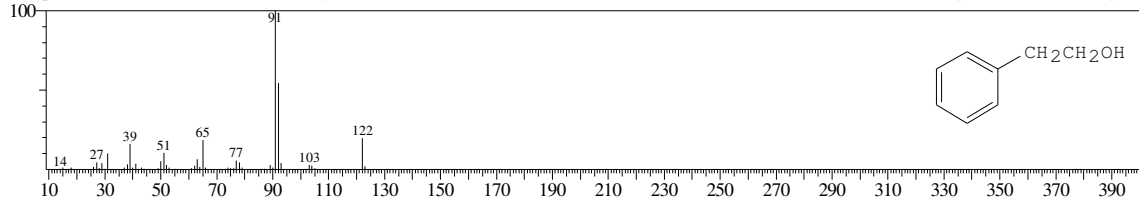
Line#:7 R.Time:10.195(Scan#:2040) MassPeaks:205
RawMode:Averaged 10.190-10.200(2039-2041) BasePeak:91.10(10890)
BG Mode:Calc. from Peak Group 1 - Event 1



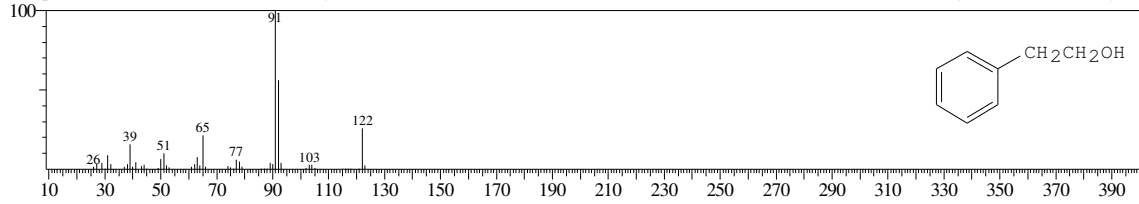
Hit#:1 Entry:16560 Library:WILEY7.LIB
SI:96 Formula:C8 H10 O CAS:60-12-8 MolWeight:122 RetIndex:0
CompName:Benzeethanol (CAS) Phenethyl alcohol \$\$ PEA \$\$ PHENETHYL ALCOLHOL \$\$ Phenethanol \$\$.beta.-PEA \$\$ Benzyl carbinol \$\$ 2-Phenyleth



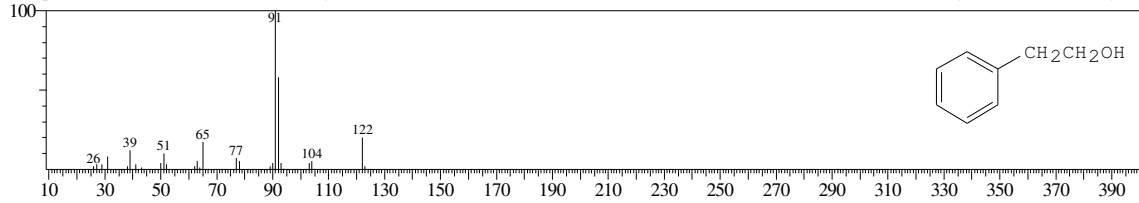
Hit#:2 Entry:16553 Library:WILEY7.LIB
SI:95 Formula:C8 H10 O CAS:60-12-8 MolWeight:122 RetIndex:0
CompName:Benzeethanol (CAS) Phenethyl alcohol \$\$ PEA \$\$ PHENETHYL ALCOLHOL \$\$ Phenethanol \$\$.beta.-PEA \$\$ Benzyl carbinol \$\$ 2-Phenyleth



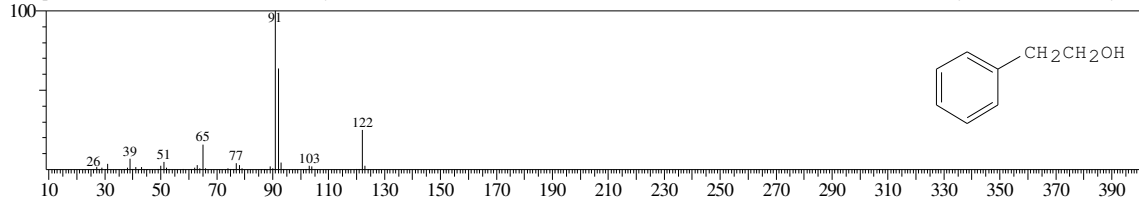
Hit#:3 Entry:16556 Library:WILEY7.LIB
SI:95 Formula:C8 H10 O CAS:60-12-8 MolWeight:122 RetIndex:0
CompName:Benzeethanol (CAS) Phenethyl alcohol \$\$ PEA \$\$ PHENETHYL ALCOLHOL \$\$ Phenethanol \$\$.beta.-PEA \$\$ Benzyl carbinol \$\$ 2-Phenyleth



Hit#:4 Entry:16562 Library:WILEY7.LIB
SI:94 Formula:C8 H10 O CAS:60-12-8 MolWeight:122 RetIndex:0
CompName:Benzeethanol (CAS) Phenethyl alcohol \$\$ PEA \$\$ PHENETHYL ALCOLHOL \$\$ Phenethanol \$\$.beta.-PEA \$\$ Benzyl carbinol \$\$ 2-Phenyleth

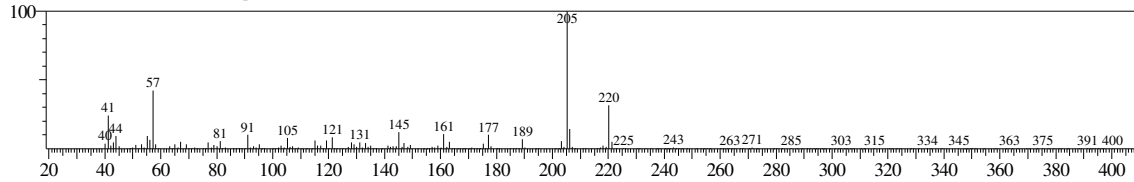


Hit#:5 Entry:16555 Library:WILEY7.LIB
SI:94 Formula:C8 H10 O CAS:60-12-8 MolWeight:122 RetIndex:0
CompName:Benzeethanol (CAS) Phenethyl alcohol \$\$ PEA \$\$ PHENETHYL ALCOLHOL \$\$ Phenethanol \$\$.beta.-PEA \$\$ Benzyl carbinol \$\$ 2-Phenyleth



<< Target >>

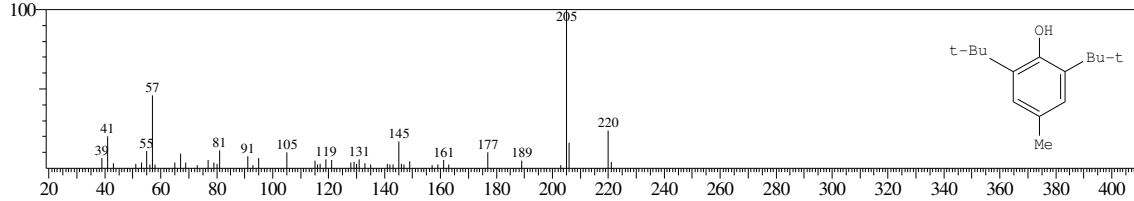
Line#:8 R.Time:16.115(Scan#:3224) MassPeaks:243
RawMode:Averaged 16.110-16.120(3223-3225) BasePeak:205.20(7493)
BG Mode:Calc. from Peak Group 1 - Event 1



Hit#:1 Entry:121010 Library:WILEY7.LIB

SI:90 Formula:C15 H24 O CAS:128-37-0 MolWeight:220 RetIndex:0

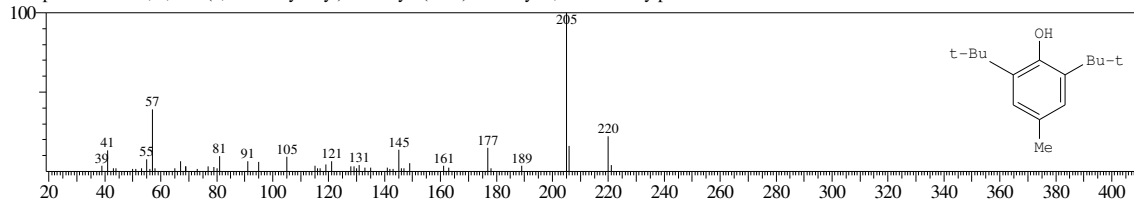
CompName:Phenol, 2,6-bis(1,1-dimethylethyl)-4-methyl- (CAS) 4-Methyl-2,6-di-tert-butylphenol \$\$ BHT \$\$ P 21 \$\$ CAO 3 \$\$ AO 29 \$\$ CAO 1 \$\$ AO 4K \$



Hit#:2 Entry:121000 Library:WILEY7.LIB

SI:89 Formula:C15 H24 O CAS:128-37-0 MolWeight:220 RetIndex:0

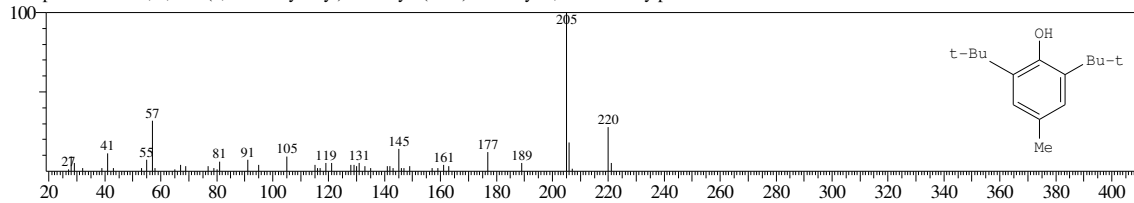
CompName:Phenol, 2,6-bis(1,1-dimethylethyl)-4-methyl- (CAS) 4-Methyl-2,6-di-tert-butylphenol \$\$ BHT \$\$ P 21 \$\$ CAO 3 \$\$ AO 29 \$\$ CAO 1 \$\$ AO 4K \$



Hit#:3 Entry:120998 Library:WILEY7.LIB

SI:88 Formula:C15 H24 O CAS:128-37-0 MolWeight:220 RetIndex:0

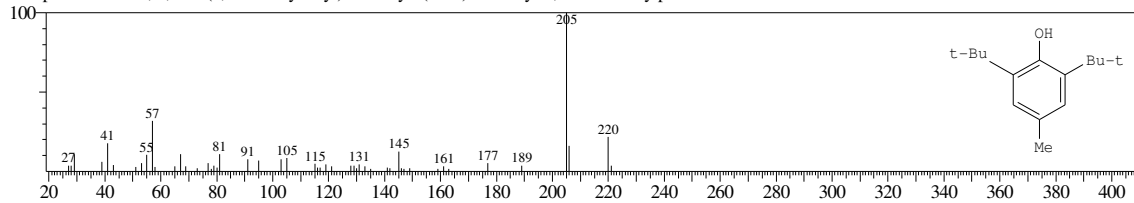
CompName:Phenol, 2,6-bis(1,1-dimethylethyl)-4-methyl- (CAS) 4-Methyl-2,6-di-tert-butylphenol \$\$ BHT \$\$ P 21 \$\$ CAO 3 \$\$ AO 29 \$\$ CAO 1 \$\$ AO 4K \$



Hit#:4 Entry:121001 Library:WILEY7.LIB

SI:88 Formula:C15 H24 O CAS:128-37-0 MolWeight:220 RetIndex:0

CompName:Phenol, 2,6-bis(1,1-dimethylethyl)-4-methyl- (CAS) 4-Methyl-2,6-di-tert-butylphenol \$\$ BHT \$\$ P 21 \$\$ CAO 3 \$\$ AO 29 \$\$ CAO 1 \$\$ AO 4K \$



Hit#:5 Entry:121002 Library:WILEY7.LIB

SI:88 Formula:C15 H24 O CAS:128-37-0 MolWeight:220 RetIndex:0

CompName:Phenol, 2,6-bis(1,1-dimethylethyl)-4-methyl- (CAS) 4-Methyl-2,6-di-tert-butylphenol \$\$ BHT \$\$ P 21 \$\$ CAO 3 \$\$ AO 29 \$\$ CAO 1 \$\$ AO 4K \$

