

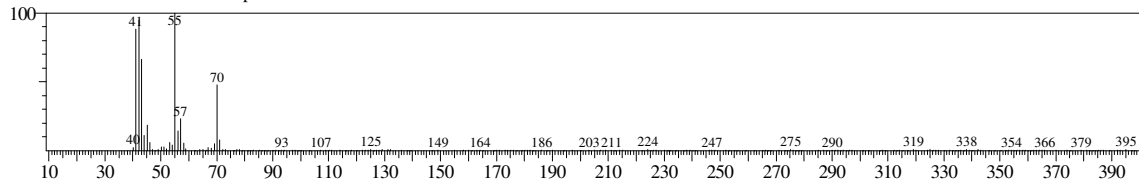
Library

<< Target >>

Line#:1 R.Time:2.745(Scan#:550) MassPeaks:219

RawMode:Averaged 2.740-2.750(549-551) BasePeak:55.10(5557)

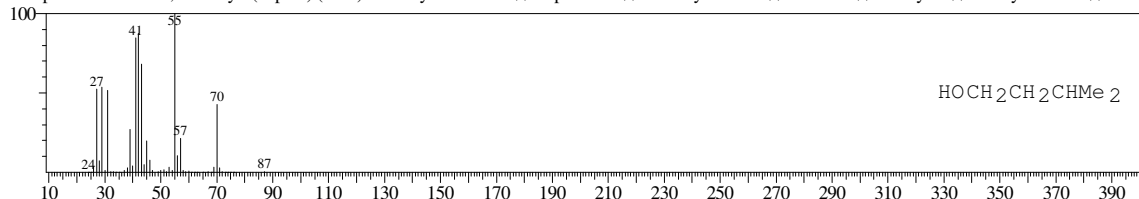
BG Mode:Calc. from Peak Group 1 - Event 1



Hit#:1 Entry:4135 Library:WILEY7.LIB

SI:95 Formula:C5 H12 O CAS:123-51-3 MolWeight:88 RetIndex:0

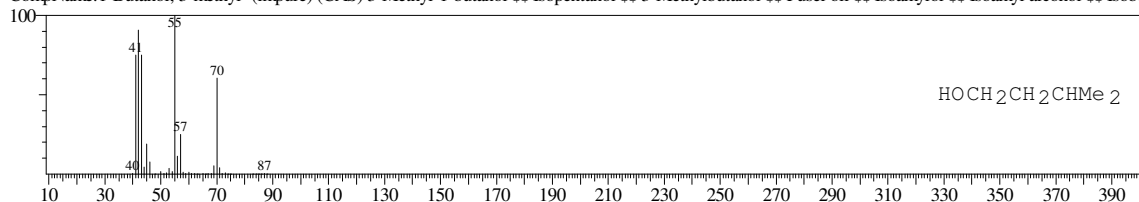
CompName:1-Butanol, 3-methyl- (impure) (CAS) 3-Methyl-1-butanol \$\$ Isopentanol \$\$ 3-Methylbutanol \$\$ Fusel oil \$\$ Isoamylol \$\$ Isoamyl alcohol \$\$ Isobu



Hit#:2 Entry:4141 Library:WILEY7.LIB

SI:94 Formula:C5 H12 O CAS:123-51-3 MolWeight:88 RetIndex:0

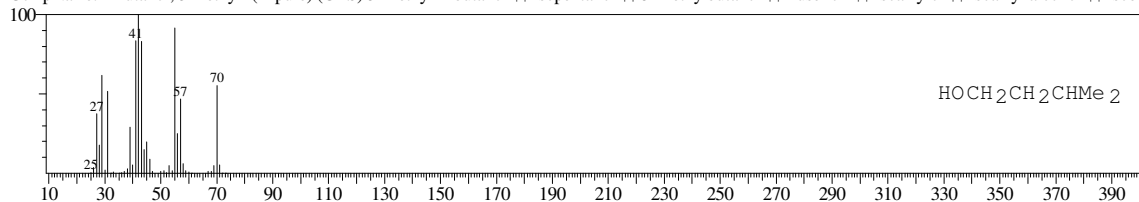
CompName:1-Butanol, 3-methyl- (impure) (CAS) 3-Methyl-1-butanol \$\$ Isopentanol \$\$ 3-Methylbutanol \$\$ Fusel oil \$\$ Isoamylol \$\$ Isoamyl alcohol \$\$ Isobu



Hit#:3 Entry:4136 Library:WILEY7.LIB

SI:94 Formula:C5 H12 O CAS:123-51-3 MolWeight:88 RetIndex:0

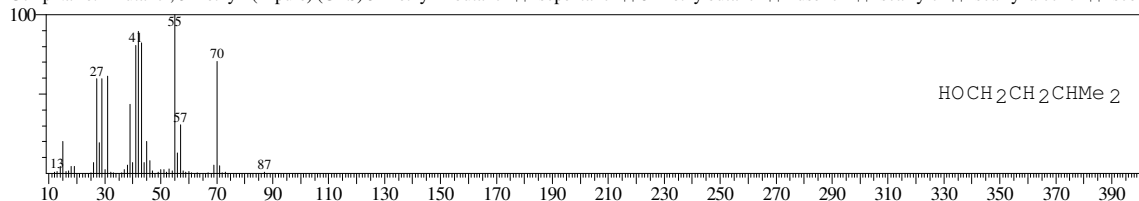
CompName:1-Butanol, 3-methyl- (impure) (CAS) 3-Methyl-1-butanol \$\$ Isopentanol \$\$ 3-Methylbutanol \$\$ Fusel oil \$\$ Isoamylol \$\$ Isoamyl alcohol \$\$ Isobu



Hit#:4 Entry:4138 Library:WILEY7.LIB

SI:94 Formula:C5 H12 O CAS:123-51-3 MolWeight:88 RetIndex:0

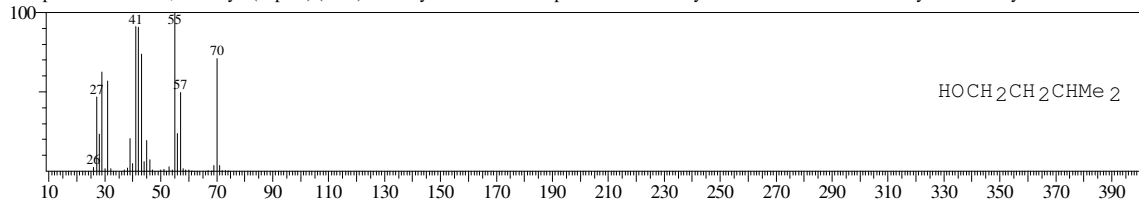
CompName:1-Butanol, 3-methyl- (impure) (CAS) 3-Methyl-1-butanol \$\$ Isopentanol \$\$ 3-Methylbutanol \$\$ Fusel oil \$\$ Isoamylol \$\$ Isoamyl alcohol \$\$ Isobu



Hit#:5 Entry:4140 Library:WILEY7.LIB

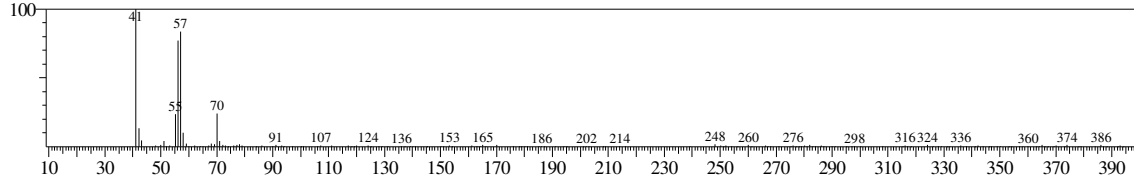
SI:93 Formula:C5 H12 O CAS:123-51-3 MolWeight:88 RetIndex:0

CompName:1-Butanol, 3-methyl- (impure) (CAS) 3-Methyl-1-butanol \$\$ Isopentanol \$\$ 3-Methylbutanol \$\$ Fusel oil \$\$ Isoamylol \$\$ Isoamyl alcohol \$\$ Isobu

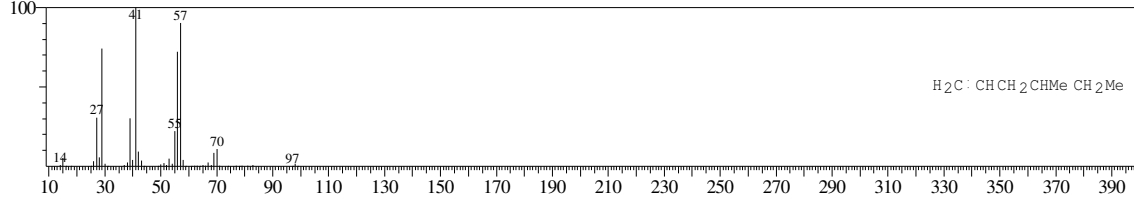


<< Target >>

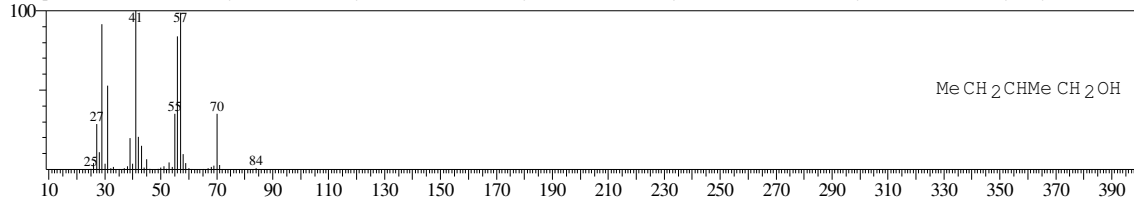
Line#:2 R.Time:2.815(Scan#:564) MassPeaks:158  
RawMode:Averaged 2.810-2.820(563-565) BasePeak:41.05(2467)  
BG Mode:Calc. from Peak Group 1 - Event 1



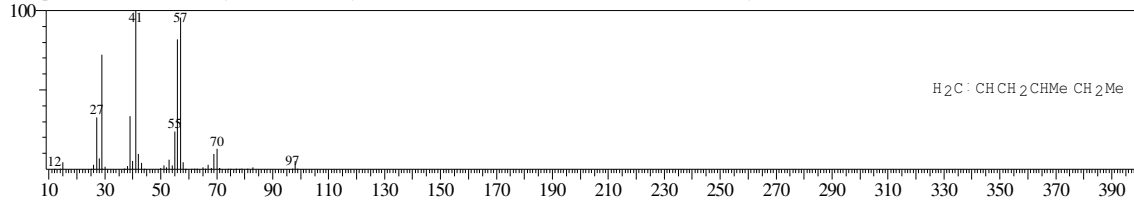
Hit#:1 Entry:6144 Library:WILEY7.LIB  
SI:90 Formula:C7 H14 CAS:3769-23-1 MolWeight:98 RetIndex:0  
CompName:1-Hexene, 4-methyl- (CAS) 4-Methyl-1-hexene C2H5CH(CH3)CH2CH=CH2 4-methylhexene-1



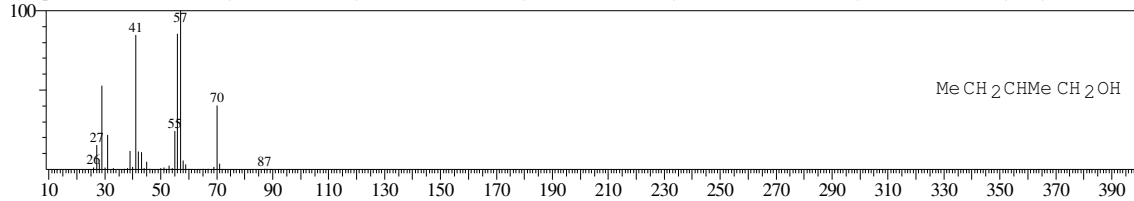
Hit#:2 Entry:4121 Library:WILEY7.LIB  
SI:89 Formula:C5 H12 O CAS:137-32-6 MolWeight:88 RetIndex:0  
CompName:1-Butanol, 2-methyl- (CAS) 2-Methyl-1-butanol sec-Butylcarbinol 2-Methyl-n-butanol Active amyl alcohol 2-Methylbutyl alcohol



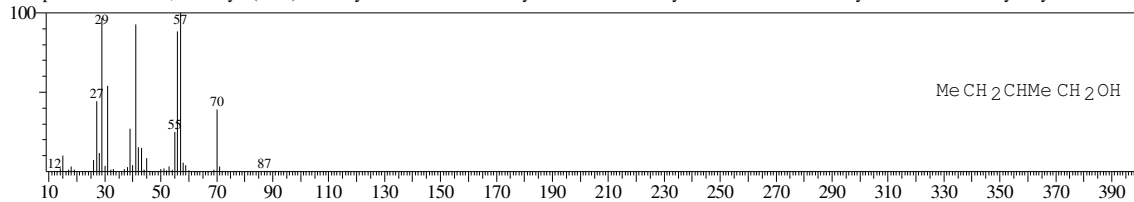
Hit#:3 Entry:6143 Library:WILEY7.LIB  
SI:89 Formula:C7 H14 CAS:3769-23-1 MolWeight:98 RetIndex:0  
CompName:1-Hexene, 4-methyl- (CAS) 4-Methyl-1-hexene C2H5CH(CH3)CH2CH=CH2 4-methylhexene-1



Hit#:4 Entry:4125 Library:WILEY7.LIB  
SI:89 Formula:C5 H12 O CAS:137-32-6 MolWeight:88 RetIndex:0  
CompName:1-Butanol, 2-methyl- (CAS) 2-Methyl-1-butanol sec-Butylcarbinol 2-Methyl-n-butanol Active amyl alcohol 2-Methylbutyl alcohol

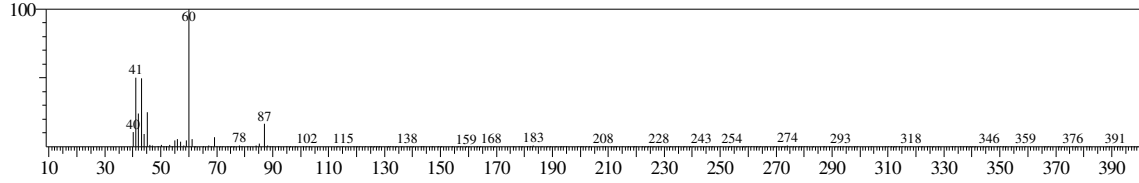


Hit#:5 Entry:4128 Library:WILEY7.LIB  
SI:89 Formula:C5 H12 O CAS:137-32-6 MolWeight:88 RetIndex:0  
CompName:1-Butanol, 2-methyl- (CAS) 2-Methyl-1-butanol sec-Butylcarbinol 2-Methyl-n-butanol Active amyl alcohol 2-Methylbutyl alcohol

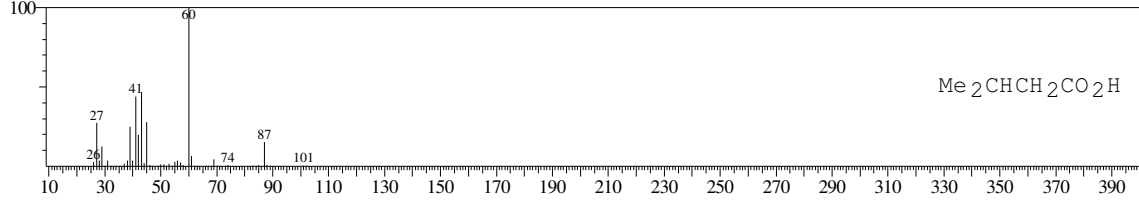


<< Target >>

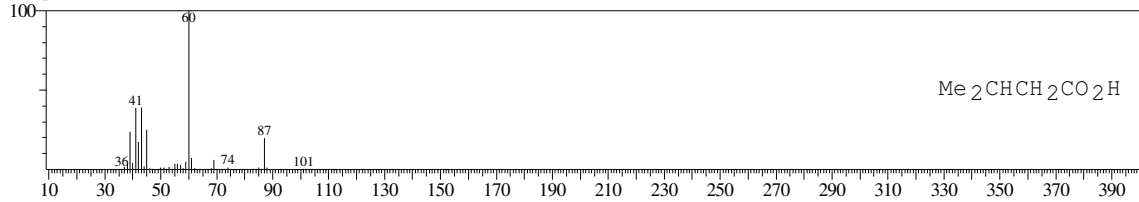
Line#:3 R.Time:5.145(Scan#:1030) MassPeaks:213  
RawMode:Averaged 5.140-5.150(1029-1031) BasePeak:60.10(6974)  
BG Mode:Calc. from Peak Group 1 - Event 1



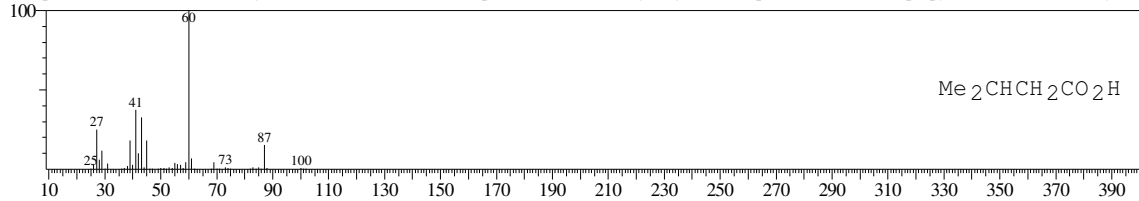
Hit#:1 Entry:7734 Library:WILEY7.LIB  
SI:93 Formula:C5 H10 O2 CAS:503-74-2 MolWeight:102 RetIndex:0  
CompName:Butanoic acid, 3-methyl- (CAS) Isovaleric acid \$\$ Delphinic acid \$\$ 3-Methylbutyrate \$\$ Isopentanoic acid \$\$ Isopropylacetic acid \$\$ 3-Methylbut



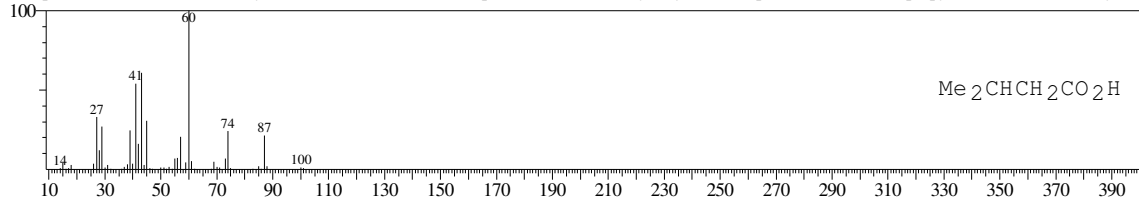
Hit#:2 Entry:7523 Library:WILEY7.LIB  
SI:93 Formula:C5 H10 O2 CAS:503-74-2 MolWeight:102 RetIndex:0  
CompName:iso-VALERIC ACID \$\$



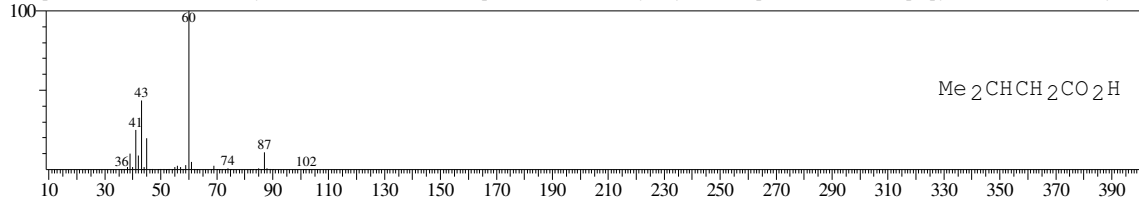
Hit#:3 Entry:7732 Library:WILEY7.LIB  
SI:90 Formula:C5 H10 O2 CAS:503-74-2 MolWeight:102 RetIndex:0  
CompName:Butanoic acid, 3-methyl- (CAS) Isovaleric acid \$\$ Delphinic acid \$\$ 3-Methylbutyrate \$\$ Isopentanoic acid \$\$ Isopropylacetic acid \$\$ 3-Methylbut



Hit#:4 Entry:7731 Library:WILEY7.LIB  
SI:90 Formula:C5 H10 O2 CAS:503-74-2 MolWeight:102 RetIndex:0  
CompName:Butanoic acid, 3-methyl- (CAS) Isovaleric acid \$\$ Delphinic acid \$\$ 3-Methylbutyrate \$\$ Isopentanoic acid \$\$ Isopropylacetic acid \$\$ 3-Methylbut

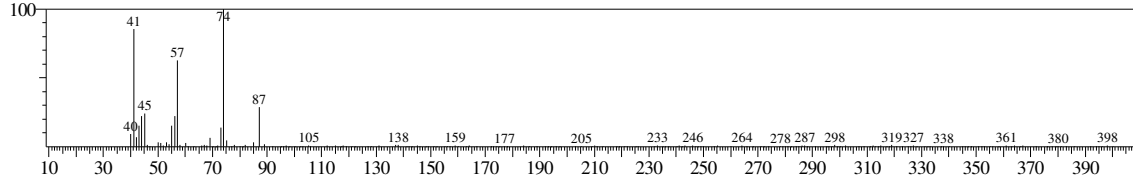


Hit#:5 Entry:7733 Library:WILEY7.LIB  
SI:89 Formula:C5 H10 O2 CAS:503-74-2 MolWeight:102 RetIndex:0  
CompName:Butanoic acid, 3-methyl- (CAS) Isovaleric acid \$\$ Delphinic acid \$\$ 3-Methylbutyrate \$\$ Isopentanoic acid \$\$ Isopropylacetic acid \$\$ 3-Methylbut

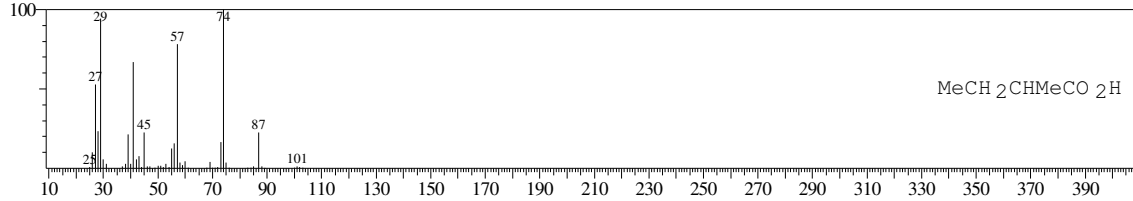


<< Target >>

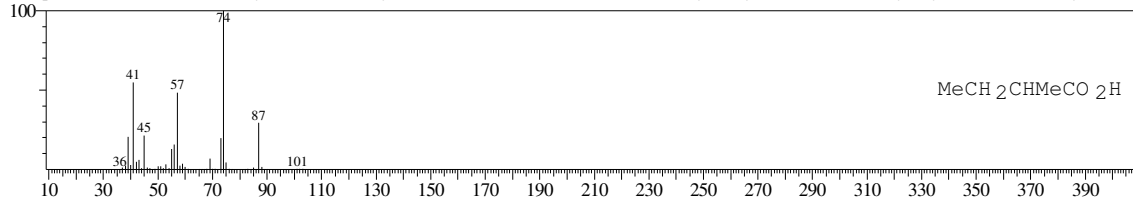
Line#:4 R.Time:5.340(Scan#:1069) MassPeaks:195  
RawMode:Averaged 5.335-5.345(1068-1070) BasePeak:74.10(3107)  
BG Mode:Calc. from Peak Group 1 - Event 1



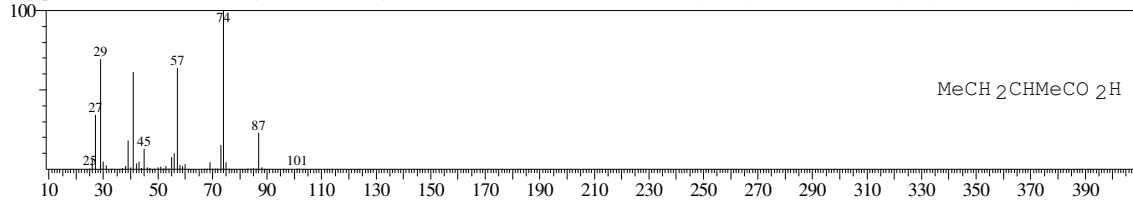
Hit#:1 Entry:7725 Library:WILEY7.LIB  
SI:89 Formula:C5 H10 O2 CAS:116-53-0 MolWeight:102 RetIndex:0  
CompName:Butanoic acid, 2-methyl- (CAS) 2-Methylbutanoic acid \$\$ Active valeric acid \$\$ Ethylmethylacetic acid \$\$ Methyllethylacetic acid \$\$ Butyric acid.



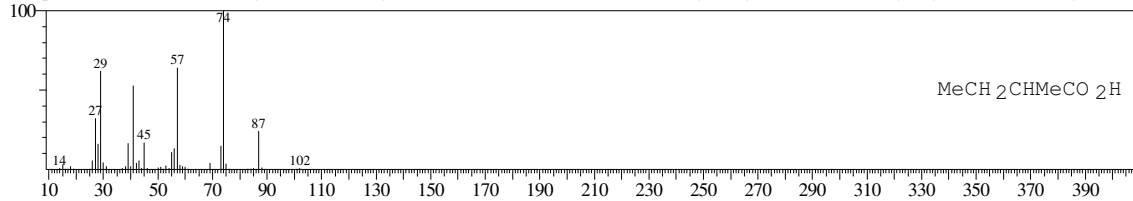
Hit#:2 Entry:7728 Library:WILEY7.LIB  
SI:89 Formula:C5 H10 O2 CAS:116-53-0 MolWeight:102 RetIndex:0  
CompName:Butanoic acid, 2-methyl- (CAS) 2-Methylbutanoic acid \$\$ Active valeric acid \$\$ Ethylmethylacetic acid \$\$ Methyllethylacetic acid \$\$ Butyric acid.



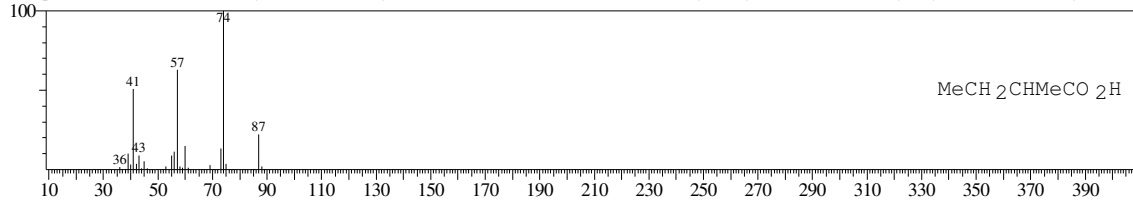
Hit#:3 Entry:7726 Library:WILEY7.LIB  
SI:88 Formula:C5 H10 O2 CAS:116-53-0 MolWeight:102 RetIndex:0  
CompName:Butanoic acid, 2-methyl- (CAS) 2-Methylbutanoic acid \$\$ Active valeric acid \$\$ Ethylmethylacetic acid \$\$ Methyllethylacetic acid \$\$ Butyric acid.



Hit#:4 Entry:7727 Library:WILEY7.LIB  
SI:88 Formula:C5 H10 O2 CAS:116-53-0 MolWeight:102 RetIndex:0  
CompName:Butanoic acid, 2-methyl- (CAS) 2-Methylbutanoic acid \$\$ Active valeric acid \$\$ Ethylmethylacetic acid \$\$ Methyllethylacetic acid \$\$ Butyric acid.

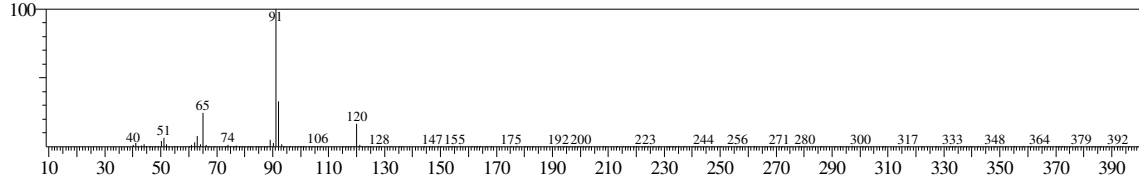


Hit#:5 Entry:7729 Library:WILEY7.LIB  
SI:86 Formula:C5 H10 O2 CAS:116-53-0 MolWeight:102 RetIndex:0  
CompName:Butanoic acid, 2-methyl- (CAS) 2-Methylbutanoic acid \$\$ Active valeric acid \$\$ Ethylmethylacetic acid \$\$ Methyllethylacetic acid \$\$ Butyric acid.

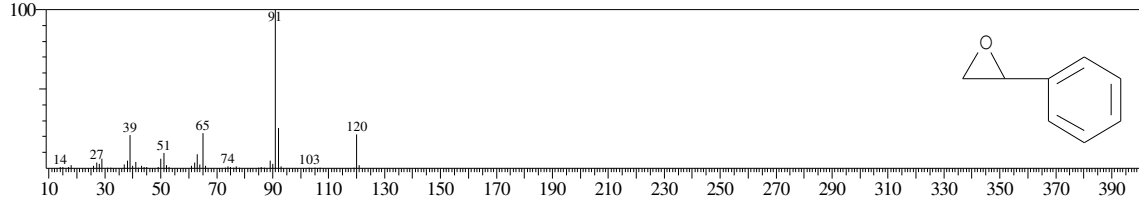


<< Target >>

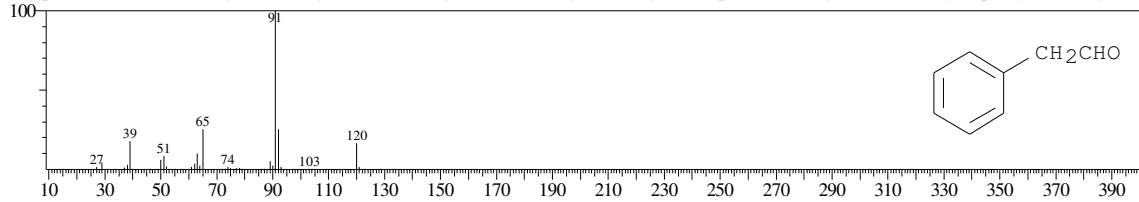
Line#:5 R.Time:8.960(Scan#:1793) MassPeaks:191  
RawMode:Averaged 8.955-8.965(1792-1794) BasePeak:91.10(25625)  
BG Mode:Calc. from Peak Group 1 - Event 1



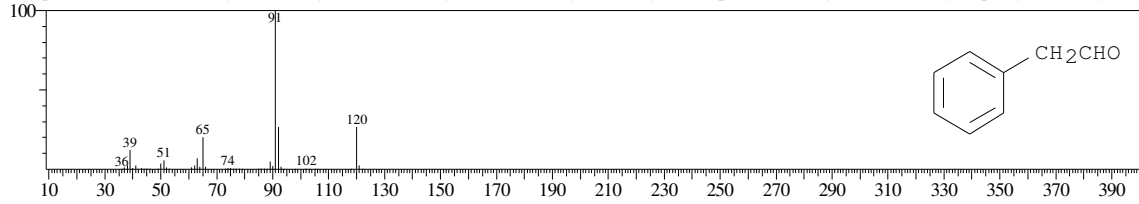
Hit#:1 Entry:15523 Library:WILEY7.LIB  
SI:96 Formula:C8 H8 O CAS:96-09-3 MolWeight:120 RetIndex:0  
CompName:Oxirane, phenyl- (CAS) Styrene oxide \$\$ Styryl oxide \$\$ Epoxy styrene \$\$ Phenylloxirane \$\$ 1-Phenylloxirane \$\$ Styrene epoxide \$\$ 2-Phenyloxira



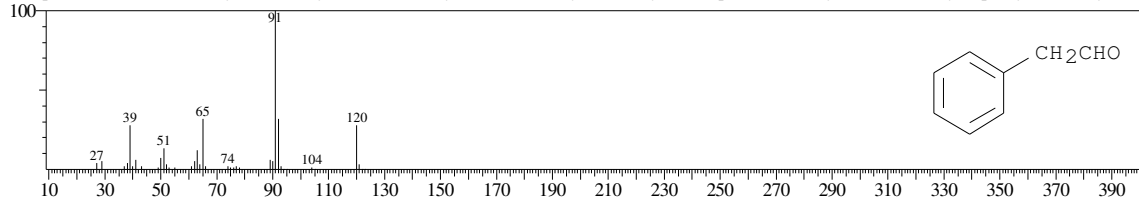
Hit#:2 Entry:15497 Library:WILEY7.LIB  
SI:96 Formula:C8 H8 O CAS:122-78-1 MolWeight:120 RetIndex:0  
CompName:Benzenecetaldehyde (CAS) Hyacinthin \$\$ Phenylethanal \$\$ Phenylacetaldehyde \$\$ .alpha.-Tolualdehyde \$\$ Acetaldehyde, phenyl- \$\$ Phenylaceti



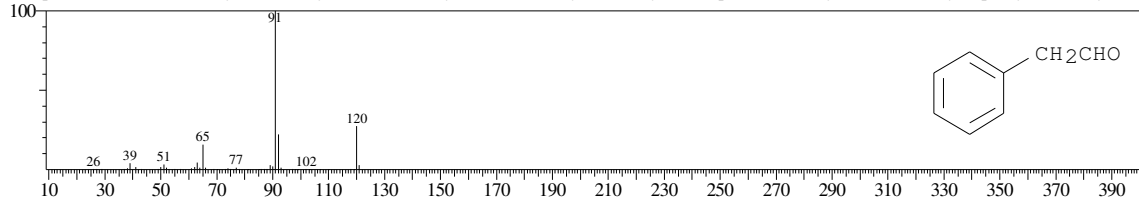
Hit#:3 Entry:15499 Library:WILEY7.LIB  
SI:96 Formula:C8 H8 O CAS:122-78-1 MolWeight:120 RetIndex:0  
CompName:Benzenecetaldehyde (CAS) Hyacinthin \$\$ Phenylethanal \$\$ Phenylacetaldehyde \$\$ .alpha.-Tolualdehyde \$\$ Acetaldehyde, phenyl- \$\$ Phenylaceti



Hit#:4 Entry:15498 Library:WILEY7.LIB  
SI:93 Formula:C8 H8 O CAS:122-78-1 MolWeight:120 RetIndex:0  
CompName:Benzenecetaldehyde (CAS) Hyacinthin \$\$ Phenylethanal \$\$ Phenylacetaldehyde \$\$ .alpha.-Tolualdehyde \$\$ Acetaldehyde, phenyl- \$\$ Phenylaceti

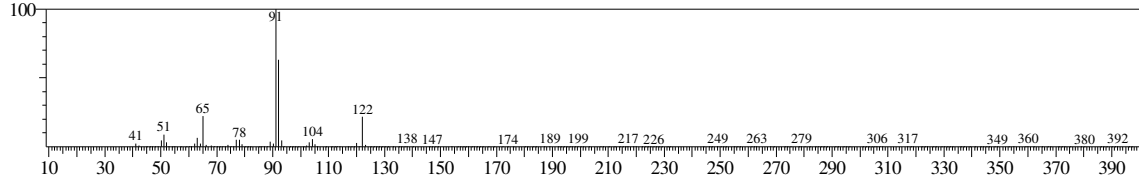


Hit#:5 Entry:15500 Library:WILEY7.LIB  
SI:92 Formula:C8 H8 O CAS:122-78-1 MolWeight:120 RetIndex:0  
CompName:Benzenecetaldehyde (CAS) Hyacinthin \$\$ Phenylethanal \$\$ Phenylacetaldehyde \$\$ .alpha.-Tolualdehyde \$\$ Acetaldehyde, phenyl- \$\$ Phenylaceti

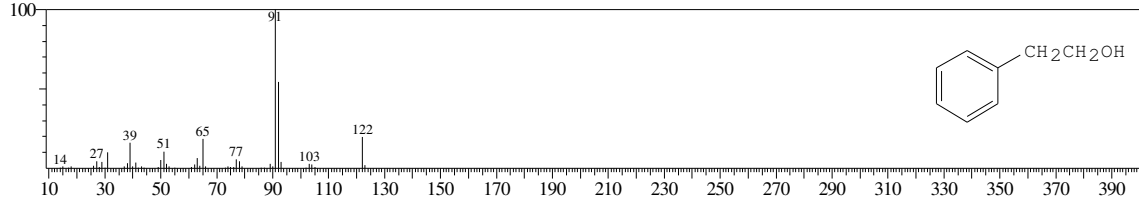


<< Target >>

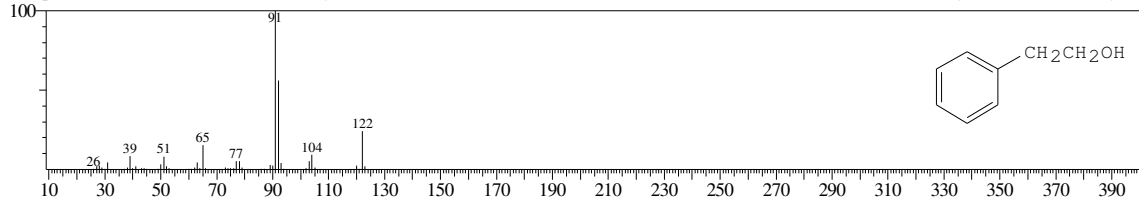
Line#6 R.Time:10.200(Scan#:2041) MassPeaks:224  
RawMode:Averaged 10.195-10.205(2040-2042) BasePeak:91.15(10906)  
BG Mode:Calc. from Peak Group 1 - Event 1



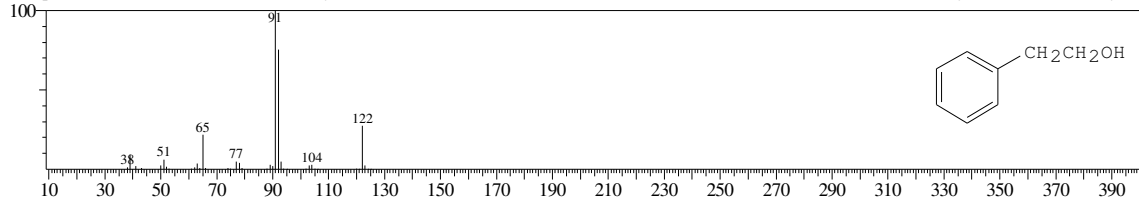
Hit#:1 Entry:16553 Library:WILEY7.LIB  
SI:95 Formula:C8 H10 O CAS:60-12-8 MolWeight:122 RetIndex:0  
CompName:Benzeethanol (CAS) Phenethyl alcohol \$\$ PEA \$\$ PHENETHYL ALCOLHOL \$\$ Phenethanol \$\$ .beta.-PEA \$\$ Benzyl carbinol \$\$ 2-Phenyleth



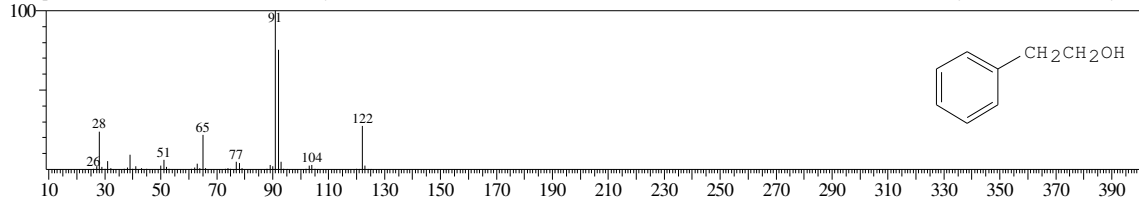
Hit#:2 Entry:16560 Library:WILEY7.LIB  
SI:95 Formula:C8 H10 O CAS:60-12-8 MolWeight:122 RetIndex:0  
CompName:Benzeethanol (CAS) Phenethyl alcohol \$\$ PEA \$\$ PHENETHYL ALCOLHOL \$\$ Phenethanol \$\$ .beta.-PEA \$\$ Benzyl carbinol \$\$ 2-Phenyleth



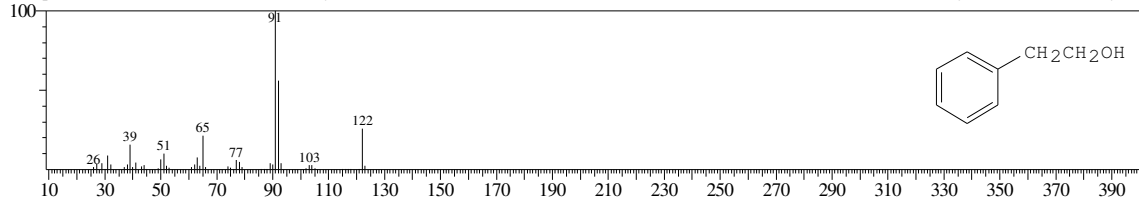
Hit#:3 Entry:16561 Library:WILEY7.LIB  
SI:94 Formula:C8 H10 O CAS:60-12-8 MolWeight:122 RetIndex:0  
CompName:Benzeethanol (CAS) Phenethyl alcohol \$\$ PEA \$\$ PHENETHYL ALCOLHOL \$\$ Phenethanol \$\$ .beta.-PEA \$\$ Benzyl carbinol \$\$ 2-Phenyleth



Hit#:4 Entry:16557 Library:WILEY7.LIB  
SI:94 Formula:C8 H10 O CAS:60-12-8 MolWeight:122 RetIndex:0  
CompName:Benzeethanol (CAS) Phenethyl alcohol \$\$ PEA \$\$ PHENETHYL ALCOLHOL \$\$ Phenethanol \$\$ .beta.-PEA \$\$ Benzyl carbinol \$\$ 2-Phenyleth

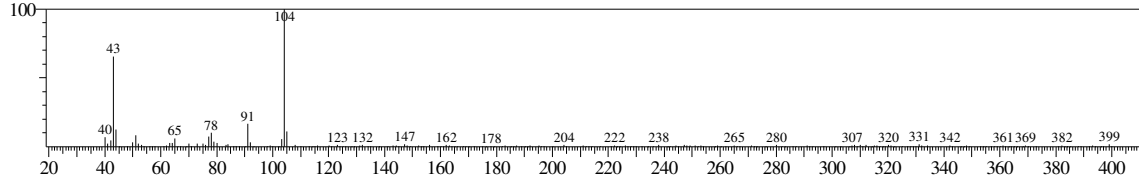


Hit#:5 Entry:16556 Library:WILEY7.LIB  
SI:94 Formula:C8 H10 O CAS:60-12-8 MolWeight:122 RetIndex:0  
CompName:Benzeethanol (CAS) Phenethyl alcohol \$\$ PEA \$\$ PHENETHYL ALCOLHOL \$\$ Phenethanol \$\$ .beta.-PEA \$\$ Benzyl carbinol \$\$ 2-Phenyleth

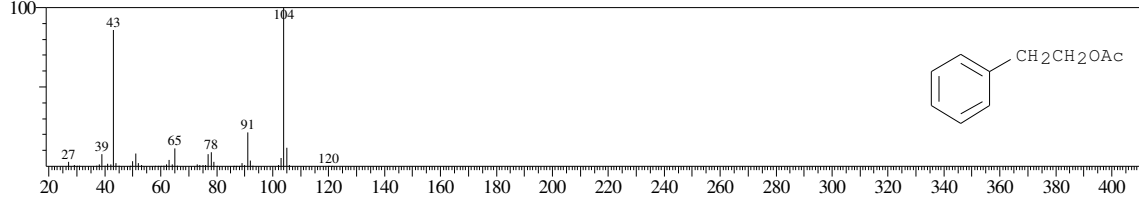


<< Target >>

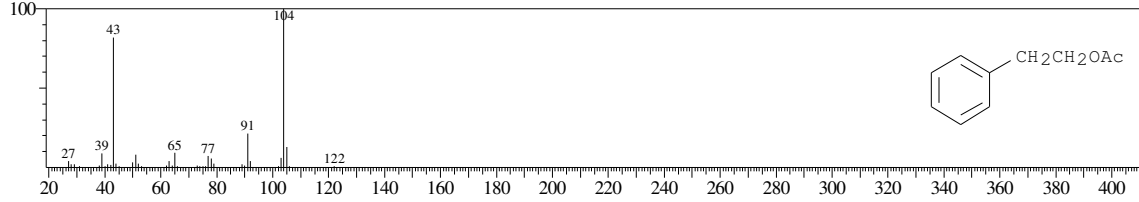
Line#:7 R.Time:12.515(Scan#:2504) MassPeaks:221  
RawMode:Averaged 12.510-12.520(2503-2505) BasePeak:104.15(2764)  
BG Mode:Calc. from Peak Group 1 - Event 1



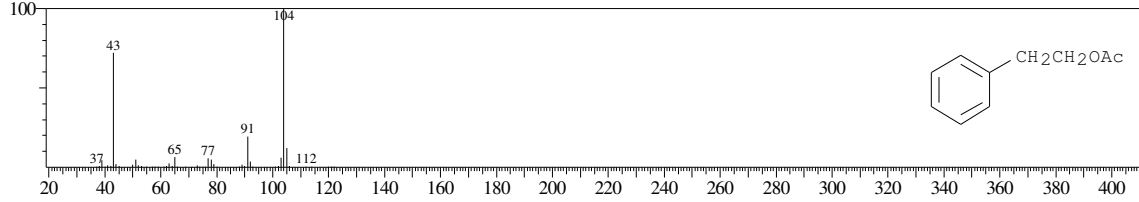
Hit#:1 Entry:53609 Library:WILEY7.LIB  
SI:88 Formula:C10 H12 O2 CAS:103-45-7 MolWeight:164 RetIndex:0  
CompName:Acetic acid, 2-phenylethyl ester (CAS) Phenethyl acetate \$\$ PHENYLETHYL ACETATE \$\$ FORMIC ACID, 2-PHENYLETHANOL ESTER \$\$ 2



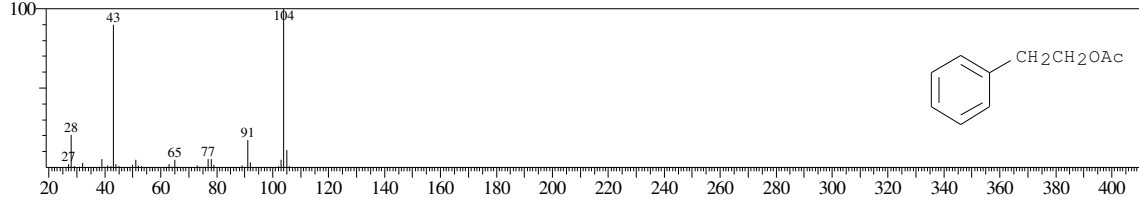
Hit#:2 Entry:53610 Library:WILEY7.LIB  
SI:88 Formula:C10 H12 O2 CAS:103-45-7 MolWeight:164 RetIndex:0  
CompName:Acetic acid, 2-phenylethyl ester (CAS) Phenethyl acetate \$\$ Phenylethyl acetate \$\$ FORMIC ACID, 2-PHENYLETHANOL ESTER \$\$ 2-Phenylet



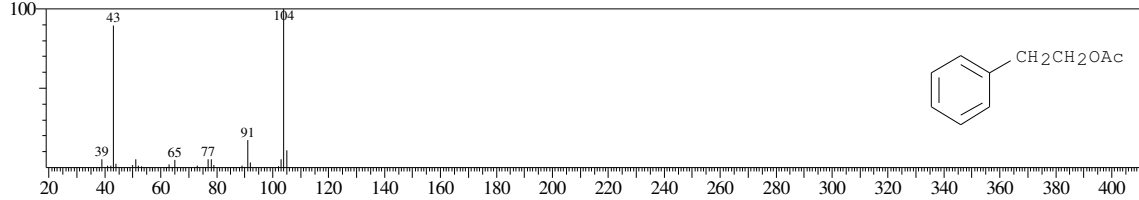
Hit#:3 Entry:53611 Library:WILEY7.LIB  
SI:87 Formula:C10 H12 O2 CAS:103-45-7 MolWeight:164 RetIndex:0  
CompName:Acetic acid, 2-phenylethyl ester (CAS) Phenethyl acetate \$\$ Phenylethyl acetate \$\$ FORMIC ACID, 2-PHENYLETHANOL ESTER \$\$ 2-Phenylet



Hit#:4 Entry:53613 Library:WILEY7.LIB  
SI:87 Formula:C10 H12 O2 CAS:103-45-7 MolWeight:164 RetIndex:0  
CompName:Acetic acid, 2-phenylethyl ester (CAS) Phenethyl acetate \$\$ Phenylethyl acetate \$\$ FORMIC ACID, 2-PHENYLETHANOL ESTER \$\$ 2-Phenylet

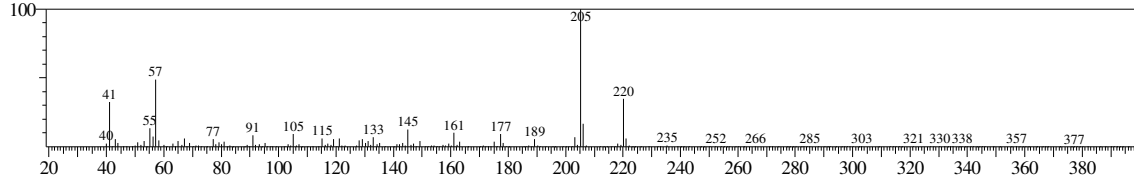


Hit#:5 Entry:53614 Library:WILEY7.LIB  
SI:86 Formula:C10 H12 O2 CAS:103-45-7 MolWeight:164 RetIndex:0  
CompName:Acetic acid, 2-phenylethyl ester (CAS) Phenethyl acetate \$\$ Phenylethyl acetate \$\$ FORMIC ACID, 2-PHENYLETHANOL ESTER \$\$ 2-Phenylet



<< Target >>

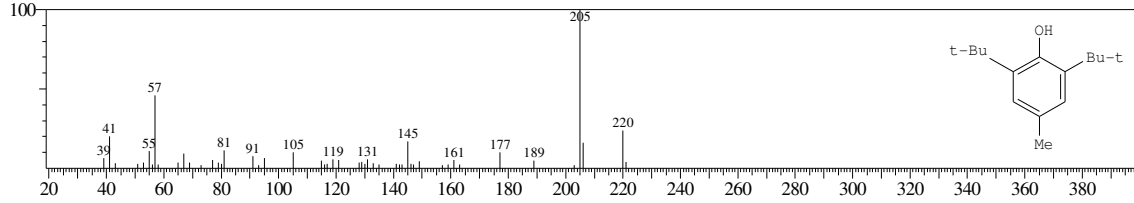
Line#:8 R.Time:16.120(Scan#:3225) MassPeaks:243  
RawMode:Averaged 16.115-16.125(3224-3226) BasePeak:205.20(5707)  
BG Mode:Calc. from Peak Group 1 - Event 1



Hit#:1 Entry:121010 Library:WILEY7.LIB

SI:91 Formula:C15 H24 O CAS:128-37-0 MolWeight:220 RetIndex:0

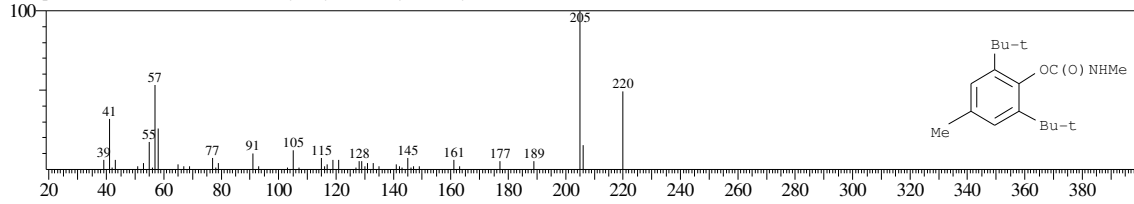
CompName:Phenol, 2,6-bis(1,1-dimethylethyl)-4-methyl- (CAS) 4-Methyl-2,6-di-tert-butylphenol \$\$ BHT \$\$ P 21 \$\$ CAO 3 \$\$ AO 29 \$\$ CAO 1 \$\$ AO 4K \$



Hit#:2 Entry:187546 Library:WILEY7.LIB

SI:89 Formula:C17 H27 N O2 CAS:1918-11-2 MolWeight:277 RetIndex:0

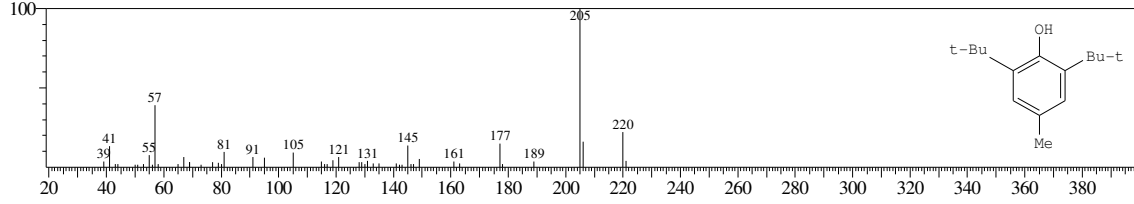
CompName:Phenol, 2,6-bis(1,1-dimethylethyl)-4-methyl-, methylcarbamate (CAS) 2,6-DI-TERT-BUTYL-4-METHYLPHENYL-N-METHYL CARBAMATE \$



Hit#:3 Entry:121000 Library:WILEY7.LIB

SI:88 Formula:C15 H24 O CAS:128-37-0 MolWeight:220 RetIndex:0

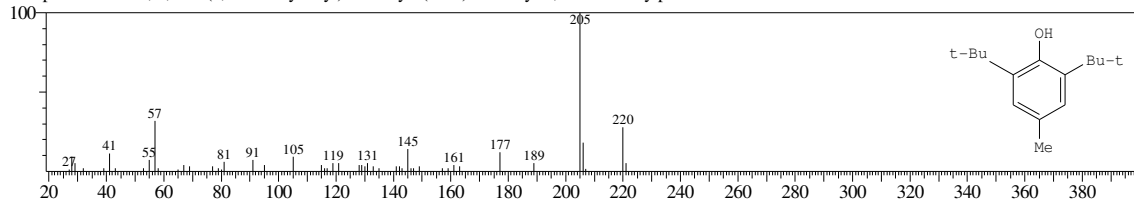
CompName:Phenol, 2,6-bis(1,1-dimethylethyl)-4-methyl- (CAS) 4-Methyl-2,6-di-tert-butylphenol \$\$ BHT \$\$ P 21 \$\$ CAO 3 \$\$ AO 29 \$\$ CAO 1 \$\$ AO 4K \$



Hit#:4 Entry:120998 Library:WILEY7.LIB

SI:87 Formula:C15 H24 O CAS:128-37-0 MolWeight:220 RetIndex:0

CompName:Phenol, 2,6-bis(1,1-dimethylethyl)-4-methyl- (CAS) 4-Methyl-2,6-di-tert-butylphenol \$\$ BHT \$\$ P 21 \$\$ CAO 3 \$\$ AO 29 \$\$ CAO 1 \$\$ AO 4K \$



Hit#:5 Entry:120448 Library:WILEY7.LIB

SI:86 Formula:C15 H24 O CAS:128-37-0 MolWeight:220 RetIndex:0

CompName:BUTYL HYDROXY TOLUENE \$\$

