

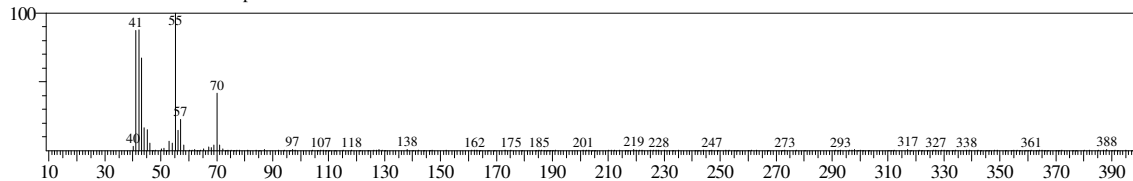
Library

<< Target >>

Line#:1 R.Time:2.740(Scan#:549) MassPeaks:186

RawMode:Averaged 2.735-2.745(548-550) BasePeak:55.15(4803)

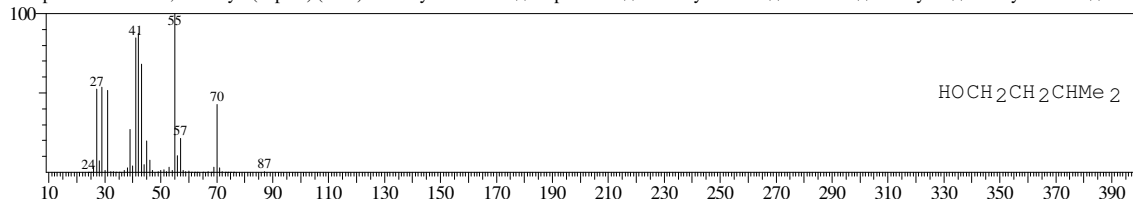
BG Mode:Calc. from Peak Group 1 - Event 1



Hit#:1 Entry:4135 Library:WILEY7.LIB

SI:95 Formula:C5 H12 O CAS:123-51-3 MolWeight:88 RetIndex:0

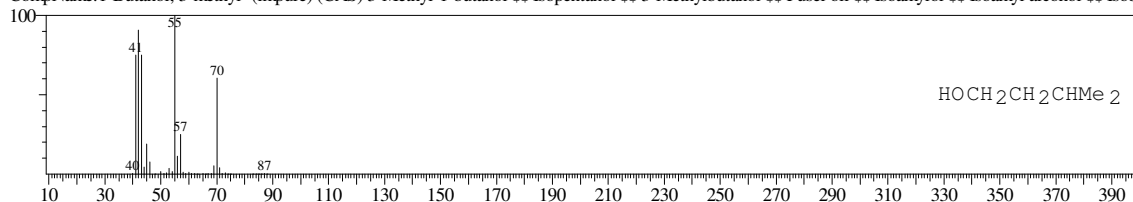
CompName:1-Butanol, 3-methyl- (impure) (CAS) 3-Methyl-1-butanol \$\$ Isopentanol \$\$ 3-Methylbutanol \$\$ Fusel oil \$\$ Isoamylol \$\$ Isoamyl alcohol \$\$ Isobu



Hit#:2 Entry:4141 Library:WILEY7.LIB

SI:94 Formula:C5 H12 O CAS:123-51-3 MolWeight:88 RetIndex:0

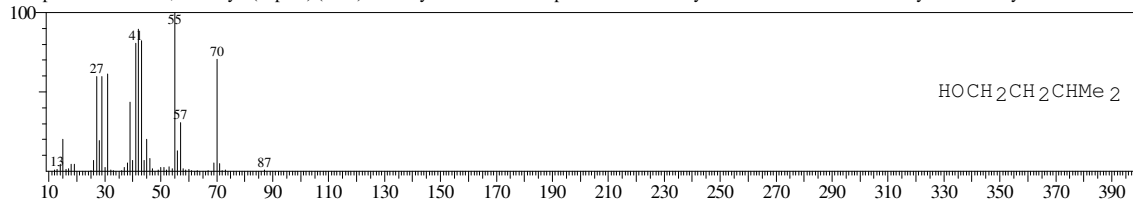
CompName:1-Butanol, 3-methyl- (impure) (CAS) 3-Methyl-1-butanol \$\$ Isopentanol \$\$ 3-Methylbutanol \$\$ Fusel oil \$\$ Isoamylol \$\$ Isoamyl alcohol \$\$ Isobu



Hit#:3 Entry:4138 Library:WILEY7.LIB

SI:93 Formula:C5 H12 O CAS:123-51-3 MolWeight:88 RetIndex:0

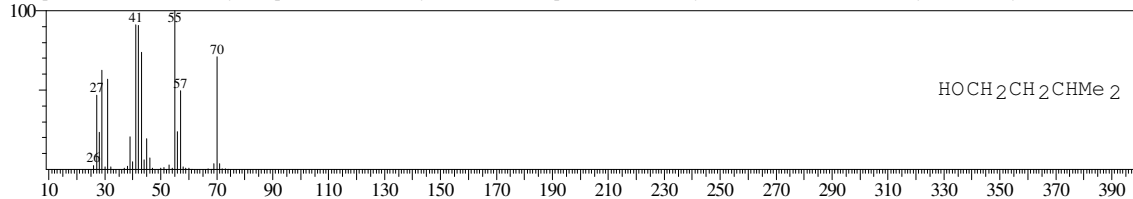
CompName:1-Butanol, 3-methyl- (impure) (CAS) 3-Methyl-1-butanol \$\$ Isopentanol \$\$ 3-Methylbutanol \$\$ Fusel oil \$\$ Isoamylol \$\$ Isoamyl alcohol \$\$ Isobu



Hit#:4 Entry:4140 Library:WILEY7.LIB

SI:93 Formula:C5 H12 O CAS:123-51-3 MolWeight:88 RetIndex:0

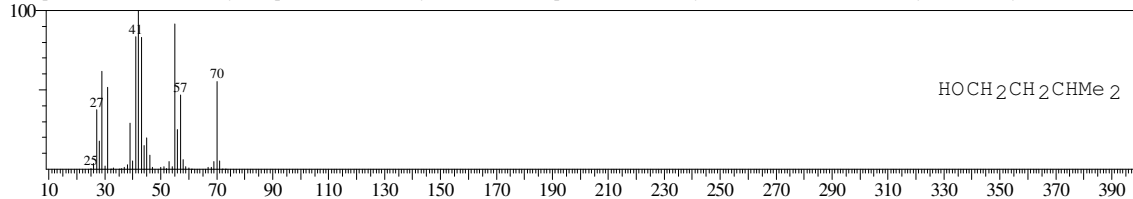
CompName:1-Butanol, 3-methyl- (impure) (CAS) 3-Methyl-1-butanol \$\$ Isopentanol \$\$ 3-Methylbutanol \$\$ Fusel oil \$\$ Isoamylol \$\$ Isoamyl alcohol \$\$ Isobu



Hit#:5 Entry:4136 Library:WILEY7.LIB

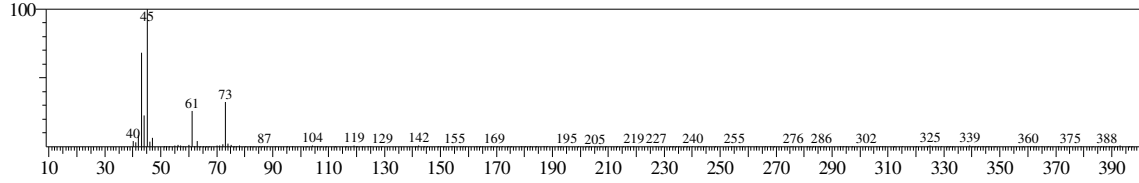
SI:93 Formula:C5 H12 O CAS:123-51-3 MolWeight:88 RetIndex:0

CompName:1-Butanol, 3-methyl- (impure) (CAS) 3-Methyl-1-butanol \$\$ Isopentanol \$\$ 3-Methylbutanol \$\$ Fusel oil \$\$ Isoamylol \$\$ Isoamyl alcohol \$\$ Isobu

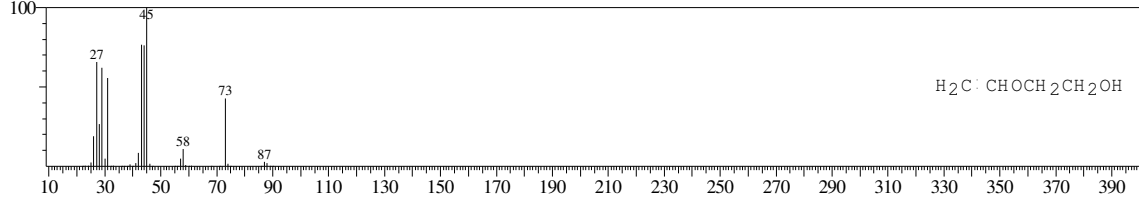


<< Target >>

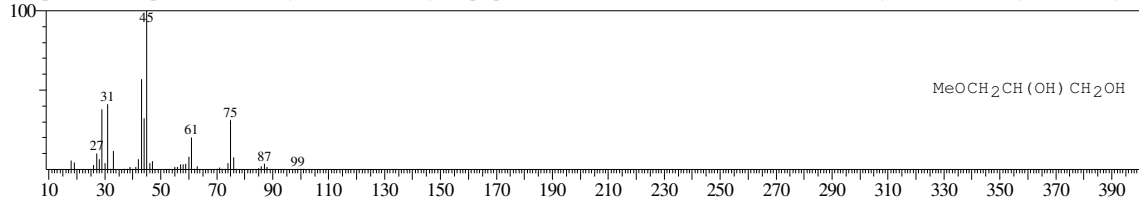
Line#:2 R.Time:4.450(Scan#:891) MassPeaks:178  
RawMode:Averaged 4.445-4.455(890-892) BasePeak:45.10(4741)  
BG Mode:Calc. from Peak Group 1 - Event 1



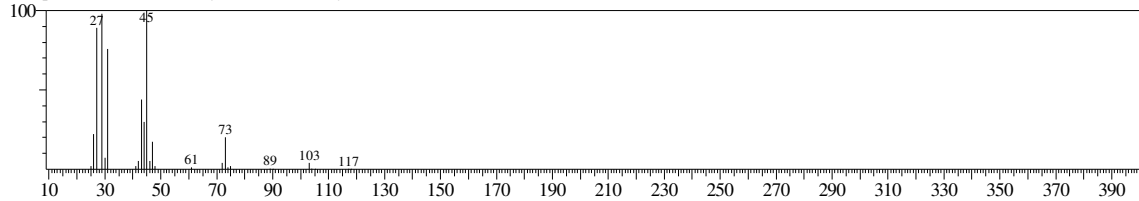
Hit#:1 Entry:3977 Library:WILEY7.LIB  
SI:85 Formula:C4 H8 O2 CAS:764-48-7 MolWeight:88 RetIndex:0  
CompName:Ethanol, 2-(ethenoxy)- (CAS) Vinyloxyethanol \$\$ 2-(Vinyloxy)ethanol \$\$ Ethanol, 2-(vinyloxy)- \$\$ 2-Hydroxyethyl vinyl ether \$\$ Ethylene glycol



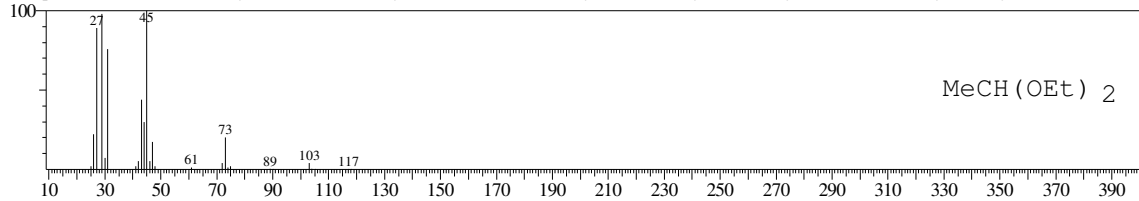
Hit#:2 Entry:8802 Library:WILEY7.LIB  
SI:85 Formula:C4 H10 O3 CAS:623-39-2 MolWeight:106 RetIndex:0  
CompName:1,2-Propanediol, 3-methoxy- (CAS) 3-Methoxy-1,2-propanediol \$\$ 2,3-PROPANDIOL, 1-METHOXY- \$\$ Glycerol 1-monomethyl ether \$\$ Glycerol



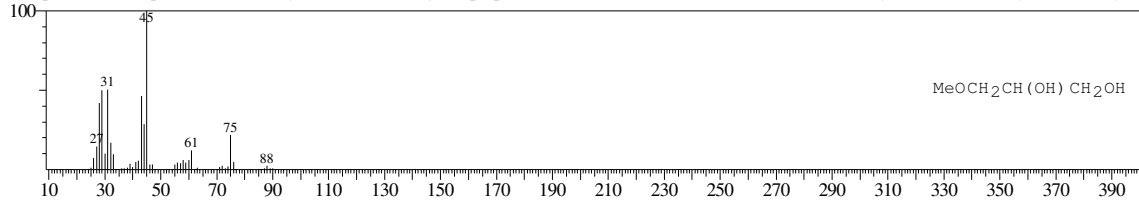
Hit#:3 Entry:14393 Library:WILEY7.LIB  
SI:85 Formula:C6 H14 O2 CAS:73506-93-1 MolWeight:118 RetIndex:0  
CompName:Ethane, diethoxy- (CAS) Diethoxyethane \$\$



Hit#:4 Entry:14720 Library:WILEY7.LIB  
SI:85 Formula:C6 H14 O2 CAS:105-57-7 MolWeight:118 RetIndex:0  
CompName:Ethane, 1,1-diethoxy- (CAS) 1,1-Diethoxyethane \$\$ Acetal \$\$ Diethyl acetal \$\$ Ethylidene diethyl ether \$\$ Acetaldehyde diethyl acetal \$\$ Acetaldehyde

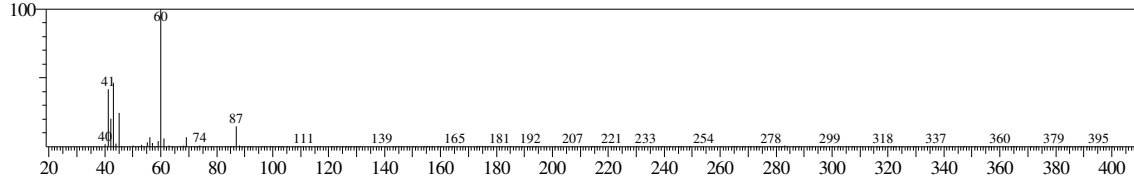


Hit#:5 Entry:8801 Library:WILEY7.LIB  
SI:84 Formula:C4 H10 O3 CAS:623-39-2 MolWeight:106 RetIndex:0  
CompName:1,2-Propanediol, 3-methoxy- (CAS) 3-Methoxy-1,2-propanediol \$\$ 2,3-PROPANDIOL, 1-METHOXY- \$\$ Glycerol 1-monomethyl ether \$\$ Glycerol

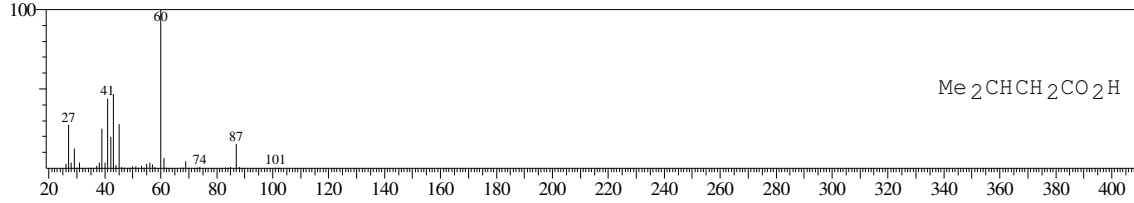


<< Target >>

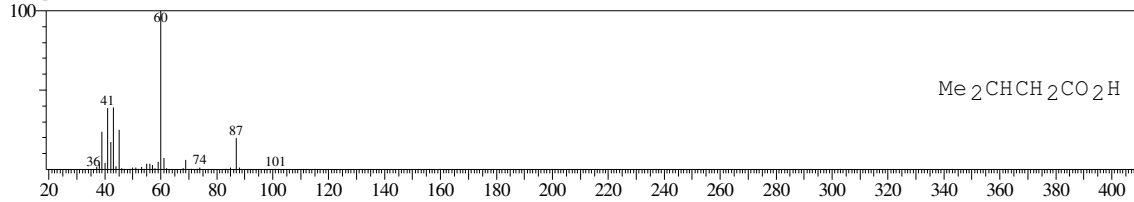
Line#:3 R.Time:5.140(Scan#:1029) MassPeaks:213  
RawMode:Averaged 5.135-5.145(1028-1030) BasePeak:60.05(7832)  
BG Mode:Calc. from Peak Group 1 - Event 1



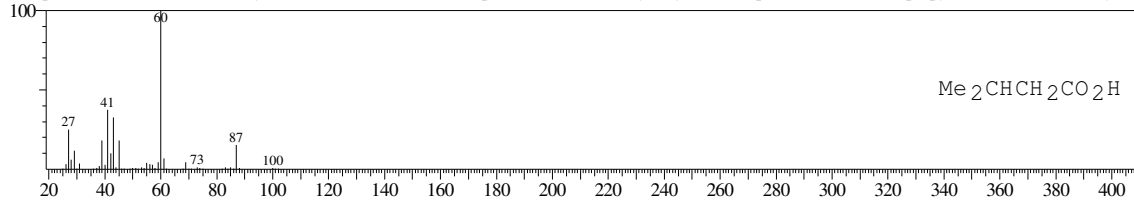
Hit#:1 Entry:7734 Library:WILEY7.LIB  
SI:95 Formula:C5 H10 O2 CAS:503-74-2 MolWeight:102 RetIndex:0  
CompName:Butanoic acid, 3-methyl- (CAS) Isovaleric acid \$\$ Delphinic acid \$\$ 3-Methylbutyrate \$\$ Isopentanoic acid \$\$ Isopropylacetic acid \$\$ 3-Methylbut



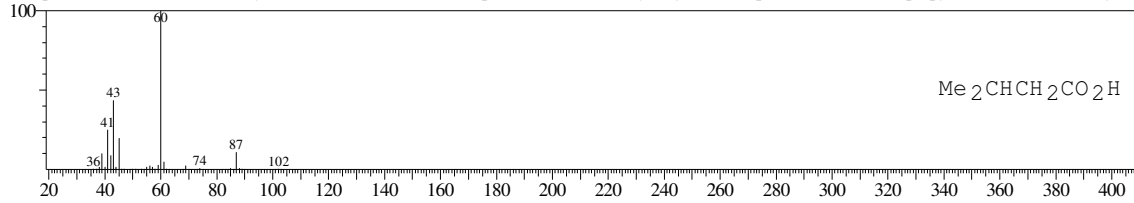
Hit#:2 Entry:7523 Library:WILEY7.LIB  
SI:94 Formula:C5 H10 O2 CAS:503-74-2 MolWeight:102 RetIndex:0  
CompName:iso-VALERIC ACID \$\$



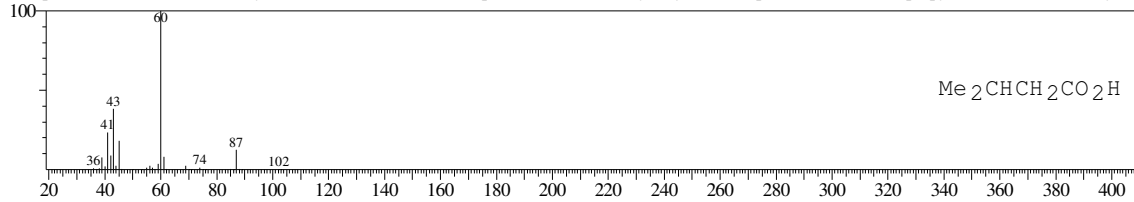
Hit#:3 Entry:7732 Library:WILEY7.LIB  
SI:92 Formula:C5 H10 O2 CAS:503-74-2 MolWeight:102 RetIndex:0  
CompName:Butanoic acid, 3-methyl- (CAS) Isovaleric acid \$\$ Delphinic acid \$\$ 3-Methylbutyrate \$\$ Isopentanoic acid \$\$ Isopropylacetic acid \$\$ 3-Methylbut



Hit#:4 Entry:7733 Library:WILEY7.LIB  
SI:92 Formula:C5 H10 O2 CAS:503-74-2 MolWeight:102 RetIndex:0  
CompName:Butanoic acid, 3-methyl- (CAS) Isovaleric acid \$\$ Delphinic acid \$\$ 3-Methylbutyrate \$\$ Isopentanoic acid \$\$ Isopropylacetic acid \$\$ 3-Methylbut

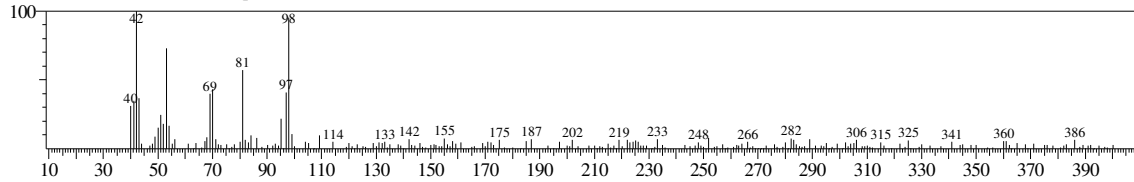


Hit#:5 Entry:7735 Library:WILEY7.LIB  
SI:91 Formula:C5 H10 O2 CAS:503-74-2 MolWeight:102 RetIndex:0  
CompName:Butanoic acid, 3-methyl- (CAS) Isovaleric acid \$\$ Delphinic acid \$\$ 3-Methylbutyrate \$\$ Isopentanoic acid \$\$ Isopropylacetic acid \$\$ 3-Methylbut

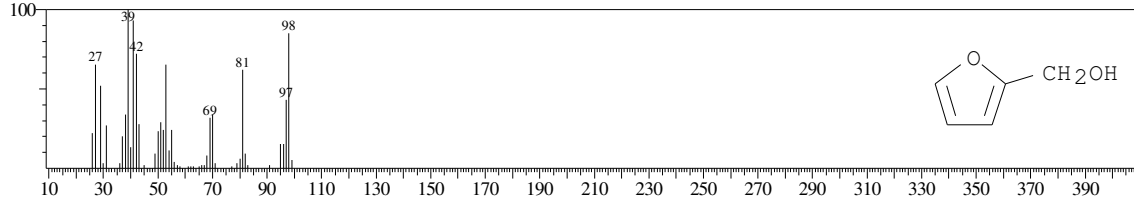


<< Target >>

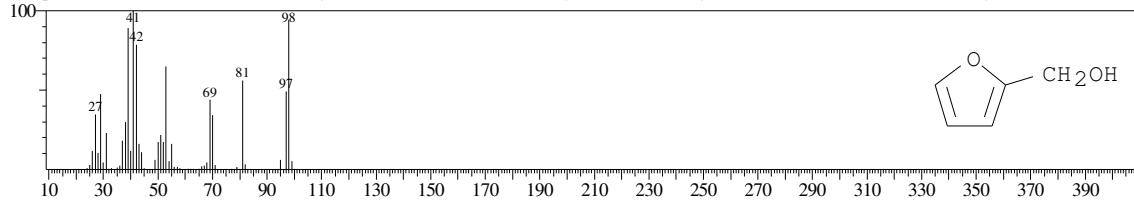
Line#:4 R.Time:5.270(Scan#:1055) MassPeaks:227  
RawMode:Averaged 5.265-5.275(1054-1056) BasePeak:42.15(654)  
BG Mode:Calc. from Peak Group 1 - Event 1



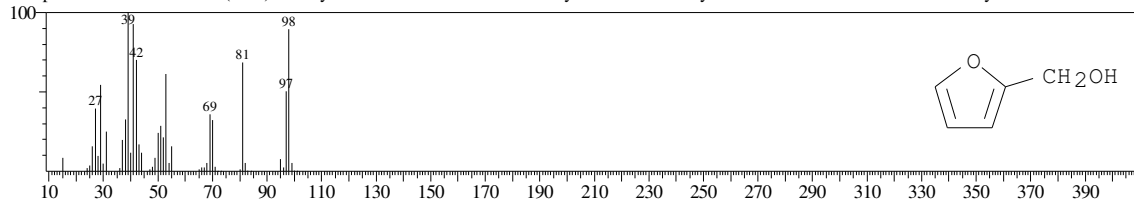
Hit#:1 Entry:5859 Library:WILEY7.LIB  
SI:80 Formula:C5 H6 O2 CAS:98-00-0 MolWeight:98 RetIndex:0  
CompName:2-Furanmethanol (CAS) Furfuryl alcohol \$\$ Furfuralcohol \$\$ Furyl alcohol \$\$ 2-Furylmethanol \$\$ 2-Furancarbinol \$\$ 2-Furylcarbinol \$\$ 2-Furany



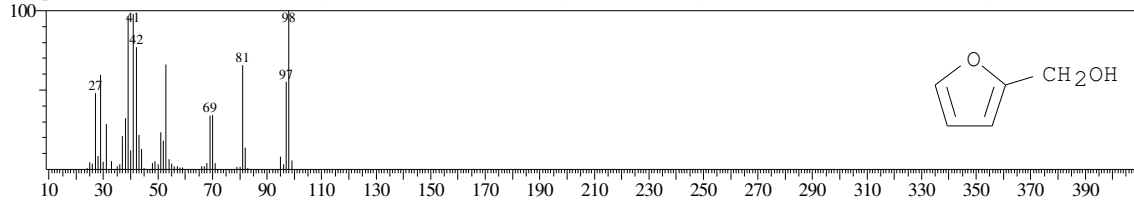
Hit#:2 Entry:5861 Library:WILEY7.LIB  
SI:79 Formula:C5 H6 O2 CAS:98-00-0 MolWeight:98 RetIndex:0  
CompName:2-Furanmethanol (CAS) Furfuryl alcohol \$\$ Furfuralcohol \$\$ Furyl alcohol \$\$ 2-Furylmethanol \$\$ 2-Furancarbinol \$\$ 2-Furylcarbinol \$\$ 2-Furany



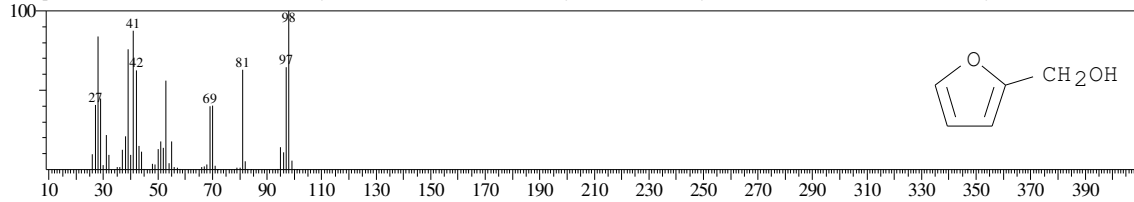
Hit#:3 Entry:5868 Library:WILEY7.LIB  
SI:79 Formula:C5 H6 O2 CAS:98-00-0 MolWeight:98 RetIndex:0  
CompName:2-Furanmethanol (CAS) Furfuryl alcohol \$\$ Furfuralcohol \$\$ Furyl alcohol \$\$ 2-Furylmethanol \$\$ 2-Furancarbinol \$\$ 2-Furylcarbinol \$\$ 2-Furany



Hit#:4 Entry:5863 Library:WILEY7.LIB  
SI:79 Formula:C5 H6 O2 CAS:98-00-0 MolWeight:98 RetIndex:0  
CompName:2-Furanmethanol (CAS) Furfuryl alcohol \$\$ Furfuralcohol \$\$ Furyl alcohol \$\$ 2-Furylmethanol \$\$ 2-Furancarbinol \$\$ 2-Furylcarbinol \$\$ 2-Furany

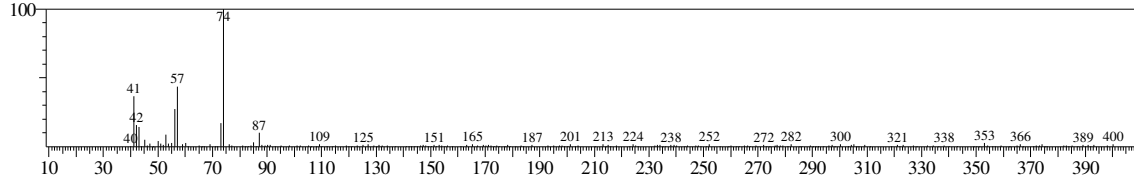


Hit#:5 Entry:5862 Library:WILEY7.LIB  
SI:78 Formula:C5 H6 O2 CAS:98-00-0 MolWeight:98 RetIndex:0  
CompName:2-Furanmethanol (CAS) Furfuryl alcohol \$\$ Furfuralcohol \$\$ Furyl alcohol \$\$ 2-Furylmethanol \$\$ 2-Furancarbinol \$\$ 2-Furylcarbinol \$\$ 2-Furany

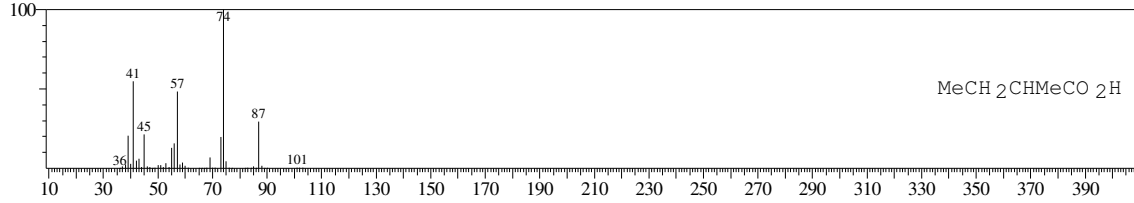


<< Target >>

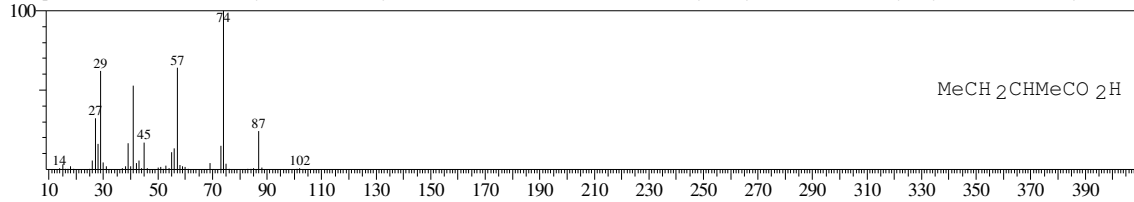
Line# 5 R.Time: 5.345 (Scan#: 1070) MassPeaks: 213  
RawMode: Averaged 5.340-5.350 (1069-1071) BasePeak: 74.10 (2270)  
BG Mode: Calc. from Peak Group 1 - Event 1



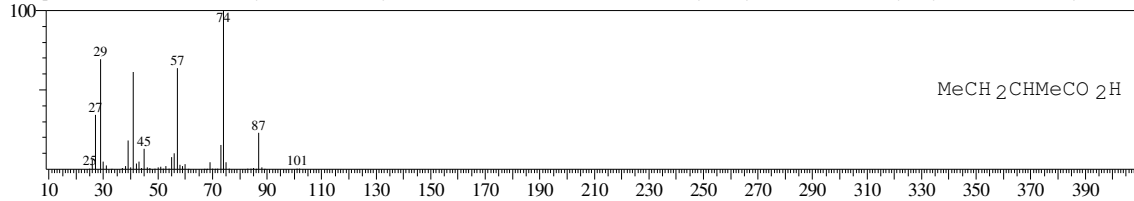
Hit#: 1 Entry: 7728 Library: WILEY7.LIB  
SI: 83 Formula: C<sub>5</sub>H<sub>10</sub>O<sub>2</sub> CAS: 116-53-0 MolWeight: 102 RetIndex: 0  
CompName: Butanoic acid, 2-methyl- (CAS) 2-Methylbutanoic acid \$\$ Active valeric acid \$\$ Ethylmethylacetic acid \$\$ Methyllethylacetic acid \$\$ Butyric acid.



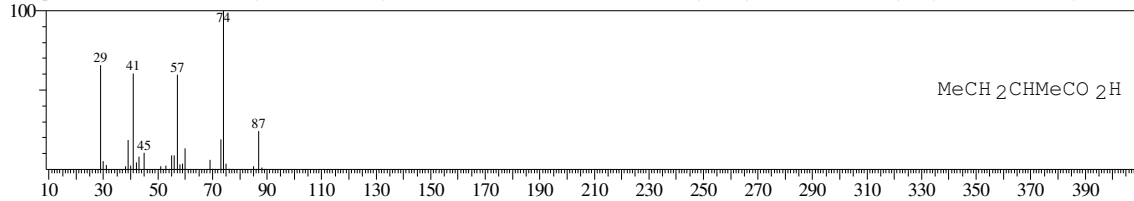
Hit#: 2 Entry: 7727 Library: WILEY7.LIB  
SI: 82 Formula: C<sub>5</sub>H<sub>10</sub>O<sub>2</sub> CAS: 116-53-0 MolWeight: 102 RetIndex: 0  
CompName: Butanoic acid, 2-methyl- (CAS) 2-Methylbutanoic acid \$\$ Active valeric acid \$\$ Ethylmethylacetic acid \$\$ Methyllethylacetic acid \$\$ Butyric acid.



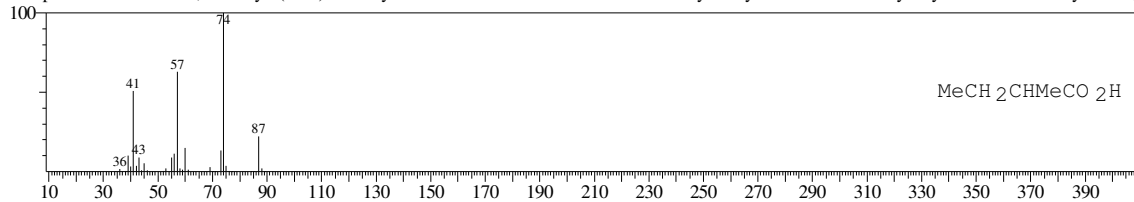
Hit#: 3 Entry: 7726 Library: WILEY7.LIB  
SI: 82 Formula: C<sub>5</sub>H<sub>10</sub>O<sub>2</sub> CAS: 116-53-0 MolWeight: 102 RetIndex: 0  
CompName: Butanoic acid, 2-methyl- (CAS) 2-Methylbutanoic acid \$\$ Active valeric acid \$\$ Ethylmethylacetic acid \$\$ Methyllethylacetic acid \$\$ Butyric acid.



Hit#: 4 Entry: 7730 Library: WILEY7.LIB  
SI: 82 Formula: C<sub>5</sub>H<sub>10</sub>O<sub>2</sub> CAS: 116-53-0 MolWeight: 102 RetIndex: 0  
CompName: Butanoic acid, 2-methyl- (CAS) 2-Methylbutanoic acid \$\$ Active valeric acid \$\$ Ethylmethylacetic acid \$\$ Methyllethylacetic acid \$\$ Butyric acid.

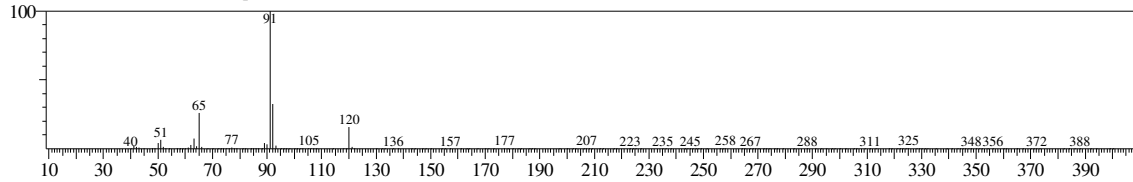


Hit#: 5 Entry: 7729 Library: WILEY7.LIB  
SI: 82 Formula: C<sub>5</sub>H<sub>10</sub>O<sub>2</sub> CAS: 116-53-0 MolWeight: 102 RetIndex: 0  
CompName: Butanoic acid, 2-methyl- (CAS) 2-Methylbutanoic acid \$\$ Active valeric acid \$\$ Ethylmethylacetic acid \$\$ Methyllethylacetic acid \$\$ Butyric acid.



<< Target >>

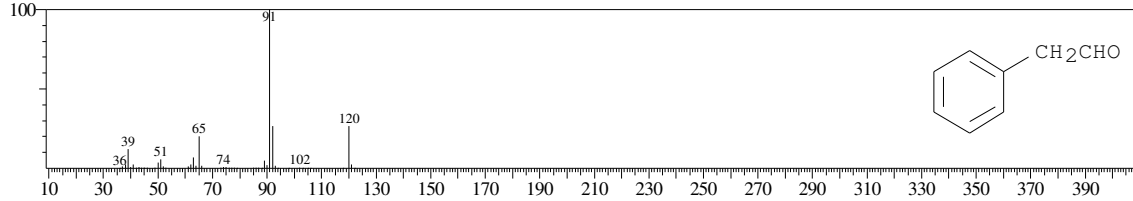
Line#6 R.Time:8.960(Scan#:1793) MassPeaks:188  
RawMode:Averaged 8.955-8.965(1792-1794) BasePeak:91.10(18326)  
BG Mode:Calc. from Peak Group 1 - Event 1



Hit#1 Entry:15499 Library:WILEY7.LIB

SI:95 Formula:C8 H8 O CAS:122-78-1 MolWeight:120 RetIndex:0

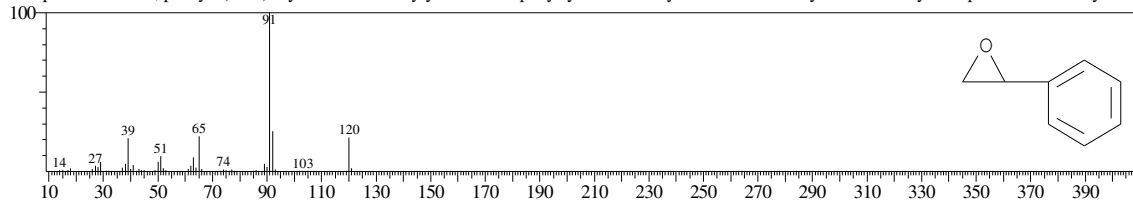
CompName:Benzenecetaldehyde (CAS) Hyacinthin \$\$ Phenylethanal \$\$ Phenylacetaldehyde \$\$ .alpha.-Tolualdehyde \$\$ Acetaldehyde, phenyl- \$\$ Phenylaceti



Hit#2 Entry:15523 Library:WILEY7.LIB

SI:95 Formula:C8 H8 O CAS:96-09-3 MolWeight:120 RetIndex:0

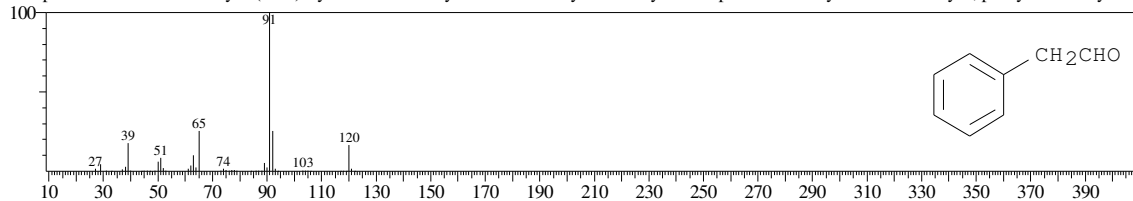
CompName:Oxirane, phenyl- (CAS) Styrene oxide \$\$ Styryl oxide \$\$ Epoxystyrene \$\$ Phenylloxirane \$\$ 1-Phenylloxirane \$\$ Styrene epoxide \$\$ 2-Phenylloxira



Hit#3 Entry:15497 Library:WILEY7.LIB

SI:95 Formula:C8 H8 O CAS:122-78-1 MolWeight:120 RetIndex:0

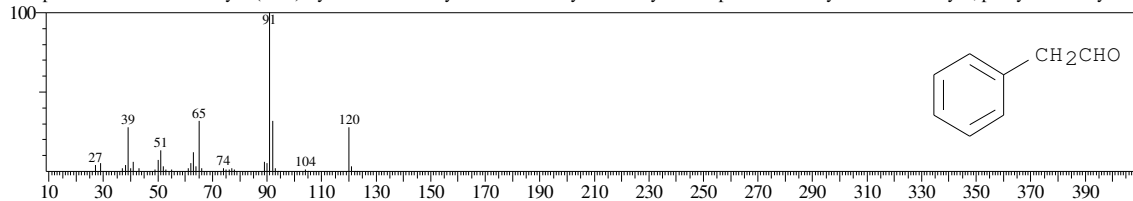
CompName:Benzenecetaldehyde (CAS) Hyacinthin \$\$ Phenylethanal \$\$ Phenylacetaldehyde \$\$ .alpha.-Tolualdehyde \$\$ Acetaldehyde, phenyl- \$\$ Phenylaceti



Hit#4 Entry:15498 Library:WILEY7.LIB

SI:93 Formula:C8 H8 O CAS:122-78-1 MolWeight:120 RetIndex:0

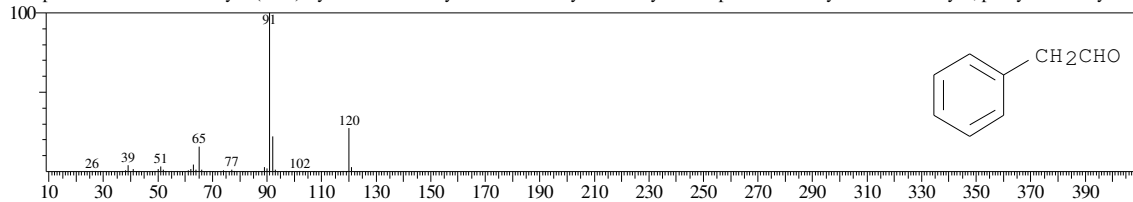
CompName:Benzenecetaldehyde (CAS) Hyacinthin \$\$ Phenylethanal \$\$ Phenylacetaldehyde \$\$ .alpha.-Tolualdehyde \$\$ Acetaldehyde, phenyl- \$\$ Phenylaceti



Hit#5 Entry:15500 Library:WILEY7.LIB

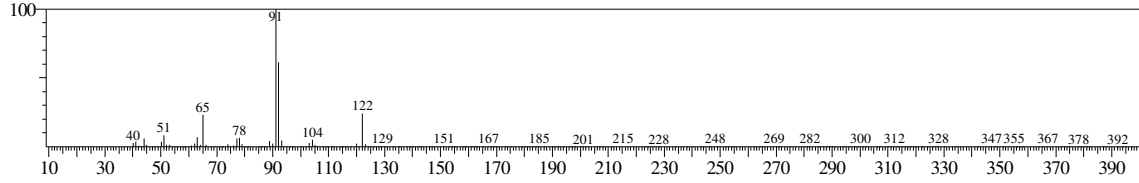
SI:92 Formula:C8 H8 O CAS:122-78-1 MolWeight:120 RetIndex:0

CompName:Benzenecetaldehyde (CAS) Hyacinthin \$\$ Phenylethanal \$\$ Phenylacetaldehyde \$\$ .alpha.-Tolualdehyde \$\$ Acetaldehyde, phenyl- \$\$ Phenylaceti

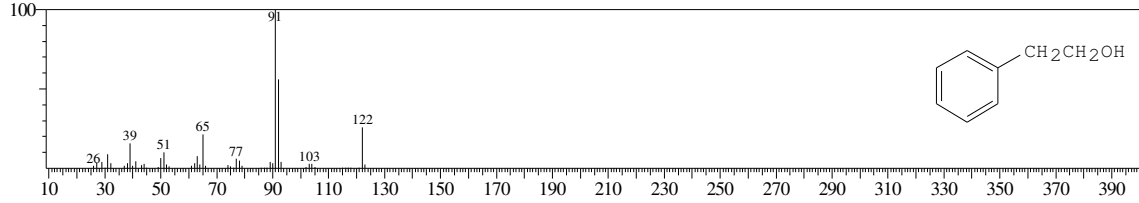


<< Target >>

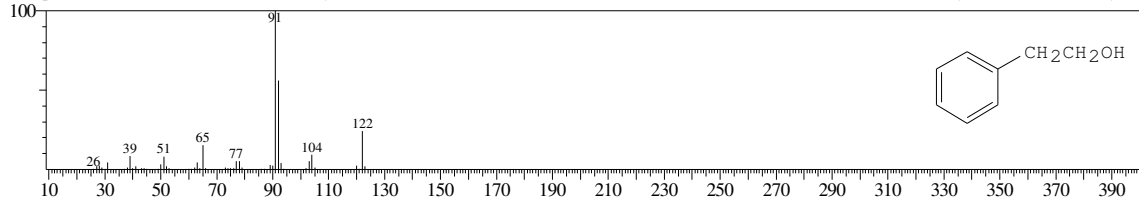
Line#:7 R.Time:10.200(Scan#:2041) MassPeaks:211  
RawMode:Averaged 10.195-10.205(2040-2042) BasePeak:91.10(10772)  
BG Mode:Calc. from Peak Group 1 - Event 1



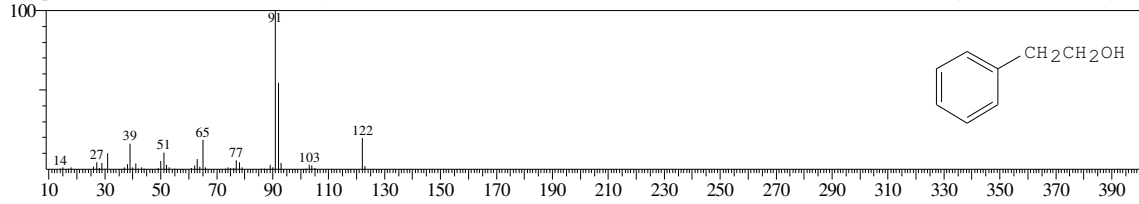
Hit#:1 Entry:16556 Library:WILEY7.LIB  
SI:95 Formula:C8 H10 O CAS:60-12-8 MolWeight:122 RetIndex:0  
CompName:Benzeethanol (CAS) Phenethyl alcohol \$\$ PEA \$\$ PHENETHYL ALCOLHOL \$\$ Phenethanol \$\$ .beta.-PEA \$\$ Benzyl carbinol \$\$ 2-Phenyleth



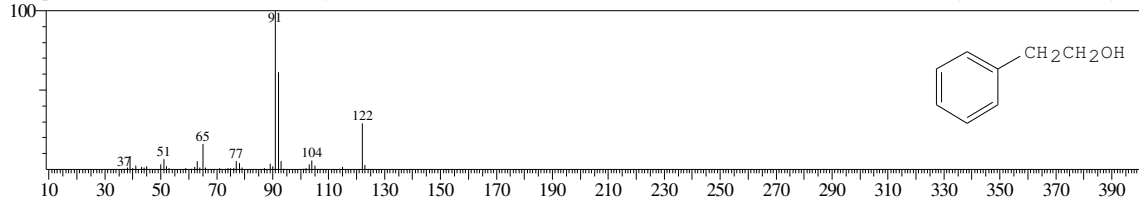
Hit#:2 Entry:16560 Library:WILEY7.LIB  
SI:95 Formula:C8 H10 O CAS:60-12-8 MolWeight:122 RetIndex:0  
CompName:Benzeethanol (CAS) Phenethyl alcohol \$\$ PEA \$\$ PHENETHYL ALCOLHOL \$\$ Phenethanol \$\$ .beta.-PEA \$\$ Benzyl carbinol \$\$ 2-Phenyleth



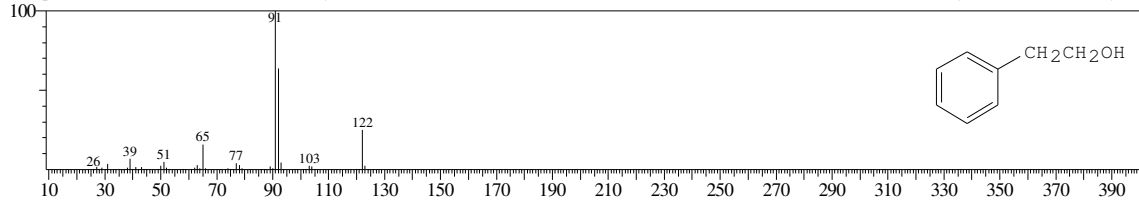
Hit#:3 Entry:16553 Library:WILEY7.LIB  
SI:94 Formula:C8 H10 O CAS:60-12-8 MolWeight:122 RetIndex:0  
CompName:Benzeethanol (CAS) Phenethyl alcohol \$\$ PEA \$\$ PHENETHYL ALCOLHOL \$\$ Phenethanol \$\$ .beta.-PEA \$\$ Benzyl carbinol \$\$ 2-Phenyleth



Hit#:4 Entry:16559 Library:WILEY7.LIB  
SI:94 Formula:C8 H10 O CAS:60-12-8 MolWeight:122 RetIndex:0  
CompName:Benzeethanol (CAS) Phenethyl alcohol \$\$ PEA \$\$ PHENETHYL ALCOLHOL \$\$ Phenethanol \$\$ .beta.-PEA \$\$ Benzyl carbinol \$\$ 2-Phenyleth

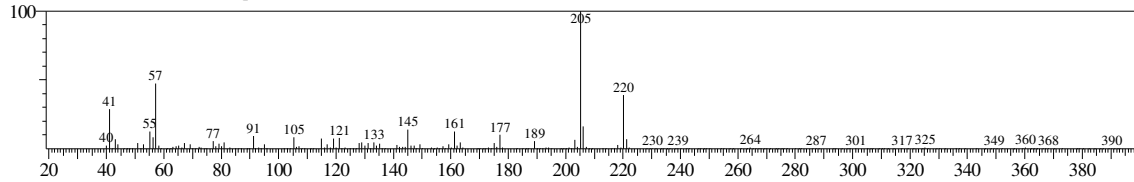


Hit#:5 Entry:16555 Library:WILEY7.LIB  
SI:94 Formula:C8 H10 O CAS:60-12-8 MolWeight:122 RetIndex:0  
CompName:Benzeethanol (CAS) Phenethyl alcohol \$\$ PEA \$\$ PHENETHYL ALCOLHOL \$\$ Phenethanol \$\$ .beta.-PEA \$\$ Benzyl carbinol \$\$ 2-Phenyleth



<< Target >>

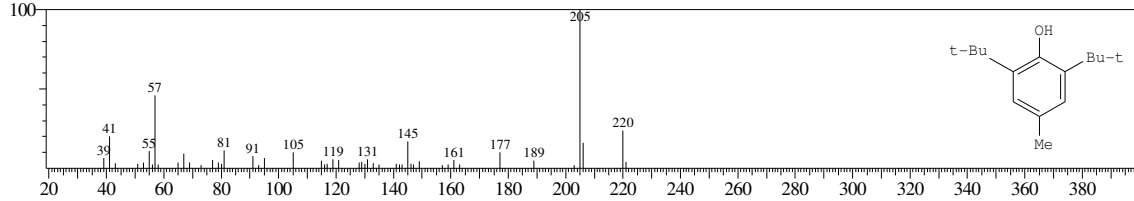
Line#:8 R.Time:16.120(Scan#:3225) MassPeaks:243  
RawMode:Averaged 16.115-16.125(3224-3226) BasePeak:205.15(5828)  
BG Mode:Calc. from Peak Group 1 - Event 1



Hit#:1 Entry:121010 Library:WILEY7.LIB

SI:90 Formula:C15 H24 O CAS:128-37-0 MolWeight:220 RetIndex:0

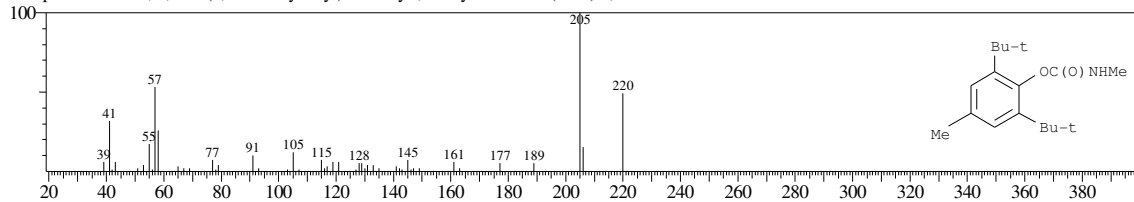
CompName:Phenol, 2,6-bis(1,1-dimethylethyl)-4-methyl- (CAS) 4-Methyl-2,6-di-tert-butylphenol \$\$ BHT \$\$ P 21 \$\$ CAO 3 \$\$ AO 29 \$\$ CAO 1 \$\$ AO 4K \$



Hit#:2 Entry:187546 Library:WILEY7.LIB

SI:88 Formula:C17 H27 N O2 CAS:1918-11-2 MolWeight:277 RetIndex:0

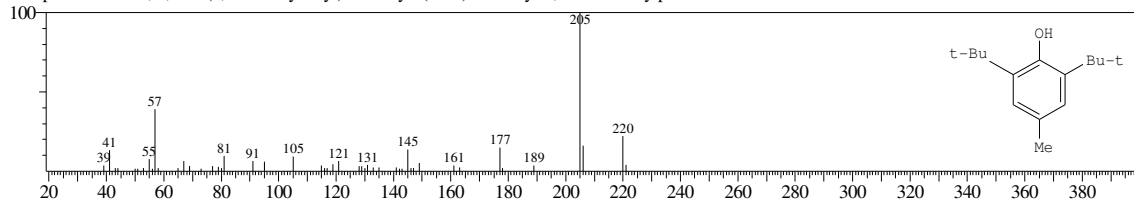
CompName:Phenol, 2,6-bis(1,1-dimethylethyl)-4-methyl-, methylcarbamate (CAS) 2,6-DI-TERT-BUTYL-4-METHYLPHENYL-N-METHYL CARBAMATE \$



Hit#:3 Entry:121000 Library:WILEY7.LIB

SI:88 Formula:C15 H24 O CAS:128-37-0 MolWeight:220 RetIndex:0

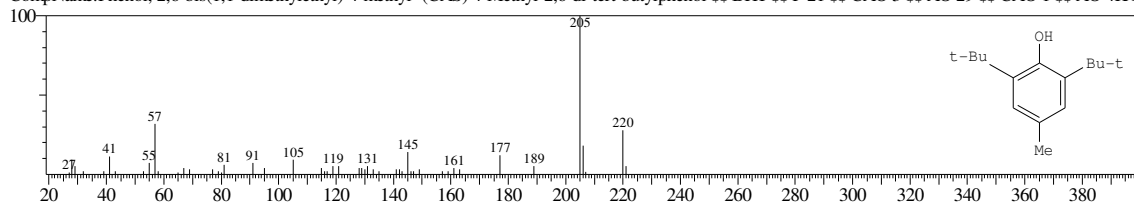
CompName:Phenol, 2,6-bis(1,1-dimethylethyl)-4-methyl- (CAS) 4-Methyl-2,6-di-tert-butylphenol \$\$ BHT \$\$ P 21 \$\$ CAO 3 \$\$ AO 29 \$\$ CAO 1 \$\$ AO 4K \$



Hit#:4 Entry:120998 Library:WILEY7.LIB

SI:88 Formula:C15 H24 O CAS:128-37-0 MolWeight:220 RetIndex:0

CompName:Phenol, 2,6-bis(1,1-dimethylethyl)-4-methyl- (CAS) 4-Methyl-2,6-di-tert-butylphenol \$\$ BHT \$\$ P 21 \$\$ CAO 3 \$\$ AO 29 \$\$ CAO 1 \$\$ AO 4K \$



Hit#:5 Entry:121001 Library:WILEY7.LIB

SI:87 Formula:C15 H24 O CAS:128-37-0 MolWeight:220 RetIndex:0

CompName:Phenol, 2,6-bis(1,1-dimethylethyl)-4-methyl- (CAS) 4-Methyl-2,6-di-tert-butylphenol \$\$ BHT \$\$ P 21 \$\$ CAO 3 \$\$ AO 29 \$\$ CAO 1 \$\$ AO 4K \$

