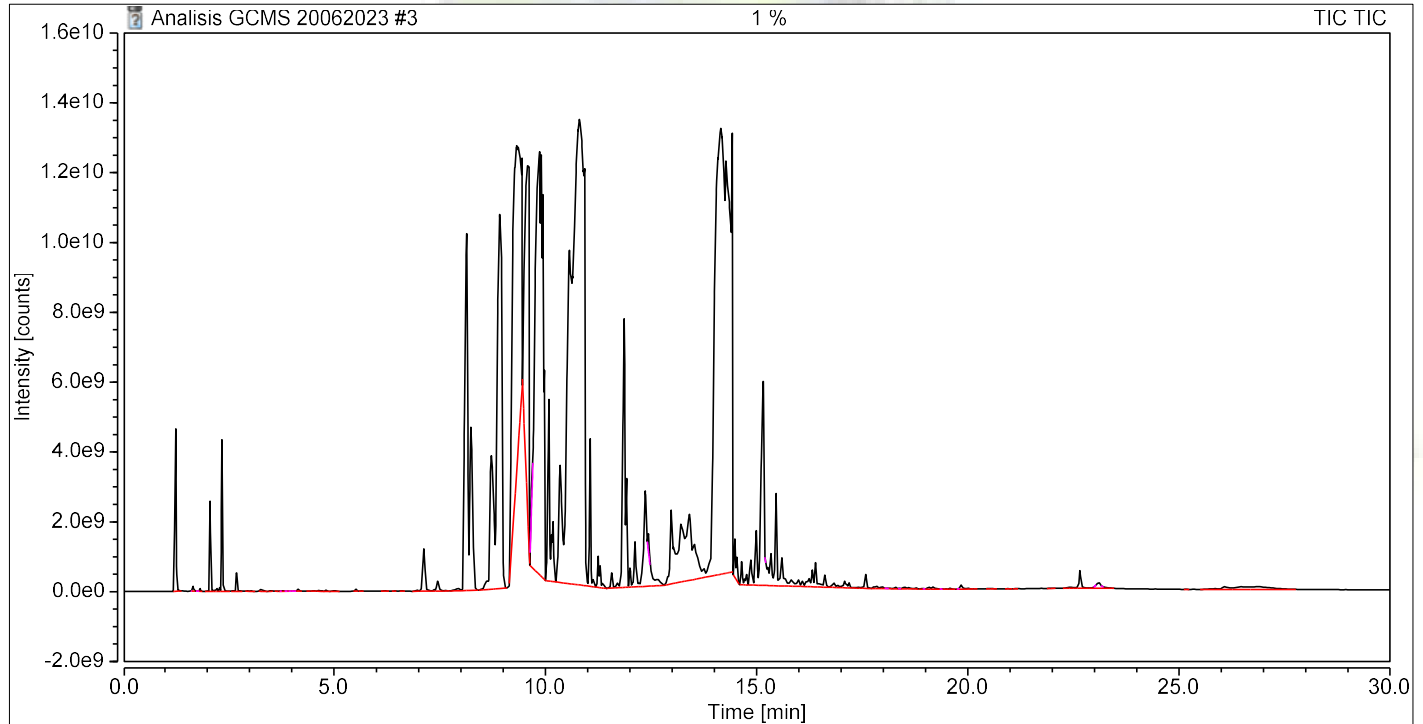


Chromatogram and Results

Injection Details

Injection Name:	1 %	Run Time (min):	29.96
Vial Number:	3	Injection Volume:	1.00
Injection Type:	Unknown	Channel:	TIC
Calibration Level:		Wavelength:	n.a.
Instrument Method:	Analisis Minyak Nilam A	Bandwidth:	n.a.
Processing Method:	MS Quantitative	Dilution Factor:	1.0000
Injection Date/Time:	20/Jun/23 11:07	Sample Weight:	1.0000

Chromatogram



Integration Results

No.	Peak Name	Retention Time min	Area counts*min	Height counts	Relative Area %	Relative Height %	Amount n.a.
1		1.204	23642109.864	1310241973.894	0.10	0.22	n.a.
2		1.252	156192473.327	4650909058.103	0.66	0.79	n.a.
3		1.320	566927.802	25940131.320	0.00	0.00	n.a.
4		1.377	431610.034	19240070.895	0.00	0.00	n.a.
5		1.619	167437.556	13483050.091	0.00	0.00	n.a.
6		1.663	2538739.550	136659002.978	0.01	0.02	n.a.
7		1.782	281282.373	10128768.186	0.00	0.00	n.a.
8		1.833	1424923.268	74832688.499	0.01	0.01	n.a.
9		2.007	1144964.966	31260107.952	0.00	0.01	n.a.
10		2.064	49345913.147	2580368348.953	0.21	0.44	n.a.
11		2.166	1517029.403	66327904.901	0.01	0.01	n.a.
12		2.207	682999.823	41423126.462	0.00	0.01	n.a.
13		2.231	1755503.148	78137171.724	0.01	0.01	n.a.
14		2.285	2350201.449	109605759.748	0.01	0.02	n.a.
15		2.343	105573664.053	4340643664.957	0.45	0.73	n.a.
16		2.595	654157.975	17430708.357	0.00	0.00	n.a.
17		2.643	590712.476	18641668.283	0.00	0.00	n.a.
18		2.690	12769496.217	528852108.288	0.05	0.09	n.a.
19		2.775	349193.593	13168983.688	0.00	0.00	n.a.
20		2.938	725671.846	21516467.037	0.00	0.00	n.a.
21		3.034	634371.085	17914750.051	0.00	0.00	n.a.
22		3.251	1953336.132	76796439.574	0.01	0.01	n.a.
23		3.292	1834953.534	67081709.957	0.01	0.01	n.a.

24		3.330	815168.710	20543884.465	0.00	0.00	n.a.
25		3.472	512873.575	20215838.355	0.00	0.00	n.a.
26		3.513	612640.096	20844381.633	0.00	0.00	n.a.
27		3.639	427234.255	12013597.563	0.00	0.00	n.a.
28		3.734	136794.631	7599897.165	0.00	0.00	n.a.
29		3.779	2363738.998	16676777.990	0.01	0.00	n.a.
30		3.850	180126.051	5458782.165	0.00	0.00	n.a.
31		3.962	162437.172	4834972.616	0.00	0.00	n.a.
32		4.064	465674.486	8049654.332	0.00	0.00	n.a.
33		4.139	2696845.033	72270029.062	0.01	0.01	n.a.
34		4.391	471189.657	16379266.951	0.00	0.00	n.a.
35		4.489	664526.588	12726699.359	0.00	0.00	n.a.
36		4.557	720871.246	21121432.927	0.00	0.00	n.a.
37		4.615	1739612.275	33133667.040	0.01	0.01	n.a.
38		4.714	676783.980	15853709.433	0.00	0.00	n.a.
39		4.809	1577766.748	33536310.996	0.01	0.01	n.a.
40		5.003	973724.009	22066701.914	0.00	0.00	n.a.
41		5.047	805426.738	20382265.692	0.00	0.00	n.a.
42		5.503	2477252.507	68267154.377	0.01	0.01	n.a.
43		5.656	360183.985	7667737.012	0.00	0.00	n.a.
44		6.173	534646.876	10186039.990	0.00	0.00	n.a.
45		6.241	959641.255	23877677.668	0.00	0.00	n.a.
46		6.421	985715.246	24652976.850	0.00	0.00	n.a.
47		6.601	1340449.725	31928472.352	0.01	0.01	n.a.
48		6.962	2133353.125	35476644.160	0.01	0.01	n.a.
49		7.122	70178315.678	1212428035.115	0.30	0.20	n.a.
50		7.248	1366860.513	26380320.886	0.01	0.00	n.a.
51		7.360	2593147.786	53611458.915	0.01	0.01	n.a.
52		7.448	19078885.818	278839680.020	0.08	0.05	n.a.
53		7.639	1119863.999	12793255.942	0.00	0.00	n.a.
54		7.839	1522263.886	30629169.351	0.01	0.01	n.a.
55		7.928	7234825.678	75464718.356	0.03	0.01	n.a.
56		8.101	492554214.356	7594144433.108	2.08	1.28	n.a.
57		8.142	348878853.228	10219785249.635	1.47	1.73	n.a.
58		8.237	364658734.371	4675503053.613	1.54	0.79	n.a.
59		8.523	2143222.287	28636065.736	0.01	0.00	n.a.
60		8.598	20607001.094	252342387.120	0.09	0.04	n.a.
61		8.720	210121458.797	3817986799.897	0.89	0.65	n.a.
62		8.754	99165486.565	3351783531.086	0.42	0.57	n.a.
63		8.782	87041864.880	2455919386.370	0.37	0.42	n.a.
64		8.918	732119406.686	10716162483.430	3.09	1.81	n.a.
65		8.969	621935027.442	8903012553.175	2.62	1.50	n.a.
66		9.213	525638711.319	6912020420.058	2.22	1.17	n.a.
67		9.288	319599102.020	9534218590.016	1.35	1.61	n.a.
68		9.322	507626774.920	9320480279.421	2.14	1.58	n.a.
69		9.350	290742041.463	8803586206.184	1.23	1.49	n.a.
70		9.377	161741059.314	8167317819.167	0.68	1.38	n.a.
71		9.407	174001515.035	7394755542.767	0.73	1.25	n.a.
72		9.448	202536829.393	6630507311.182	0.85	1.12	n.a.
73		9.462	47188298.495	661568153.650	0.20	0.11	n.a.
74		9.496	52924669.551	4251472270.912	0.22	0.72	n.a.
75		9.526	373290917.466	7043391894.221	1.57	1.19	n.a.
76		9.577	390201015.415	9807032628.898	1.65	1.66	n.a.
77		9.615	279852308.021	10929225579.721	1.18	1.85	n.a.
78		9.666	22874889.220	636044446.451	0.10	0.11	n.a.
79		9.751	447654408.715	7590315561.227	1.89	1.28	n.a.
80		9.805	672666828.493	11004262749.044	2.84	1.86	n.a.
81		9.866	598179536.993	12113549066.205	2.52	2.05	n.a.
82		9.907	535062345.354	12077277329.823	2.26	2.04	n.a.
83		9.945	316186640.959	10985093008.240	1.33	1.86	n.a.
84		9.975	154452558.595	6343227221.917	0.65	1.07	n.a.
85		10.026	7070622.051	432654547.967	0.03	0.07	n.a.
86		10.084	230139133.440	5199139060.684	0.97	0.88	n.a.
87		10.145	44893481.999	1338514541.664	0.19	0.23	n.a.
88		10.183	66771078.597	1718292511.827	0.28	0.29	n.a.

89		10.353	310955265.790	3355303838.772	1.31	0.57	n.a.
90		10.506	226047950.844	5234033700.826	0.95	0.88	n.a.
91		10.574	884502464.649	9544273139.656	3.73	1.61	n.a.
92		10.642	327032979.124	8793141607.818	1.38	1.49	n.a.
93		10.676	296018150.511	9935270621.339	1.25	1.68	n.a.
94		10.700	212822929.933	10572946472.757	0.90	1.79	n.a.
95		10.734	644415935.631	12042318765.552	2.72	2.04	n.a.
96		10.781	264157610.783	13031653357.237	1.11	2.20	n.a.
97		10.809	807016412.466	13332956407.299	3.40	2.25	n.a.
98		10.843	305925347.516	12973834215.005	1.29	2.19	n.a.
99		10.883	418654066.183	12435901922.337	1.77	2.10	n.a.
100		10.904	161043531.718	11976306550.133	0.68	2.02	n.a.
101		10.934	349572359.530	11940246052.644	1.47	2.02	n.a.
102		10.979	9380351.553	296641070.309	0.04	0.05	n.a.
103		11.064	137999951.183	4221869877.671	0.58	0.71	n.a.
104		11.128	7010894.264	216516230.180	0.03	0.04	n.a.
105		11.162	3085201.645	119314091.702	0.01	0.02	n.a.
106		11.251	30718912.639	895205213.110	0.13	0.15	n.a.
107		11.298	21859481.236	628058047.905	0.09	0.11	n.a.
108		11.353	4825664.822	129803014.559	0.02	0.02	n.a.
109		11.404	2559334.538	72844184.350	0.01	0.01	n.a.
110		11.468	1168623.630	39938986.567	0.00	0.01	n.a.
111		11.574	19838529.978	438722620.611	0.08	0.07	n.a.
112		11.655	1251716.477	40313082.261	0.01	0.01	n.a.
113		11.713	7425779.162	136897523.094	0.03	0.02	n.a.
114		11.819	81911215.888	2464769808.108	0.35	0.42	n.a.
115		11.870	356722844.524	7693388445.401	1.50	1.30	n.a.
116		11.921	114935376.641	3254084472.923	0.48	0.55	n.a.
117		12.006	20414518.261	545132858.497	0.09	0.09	n.a.
118		12.067	3686293.691	139965973.409	0.02	0.02	n.a.
119		12.121	65353160.372	1291705627.516	0.28	0.22	n.a.
120		12.227	4418926.509	106172994.650	0.02	0.02	n.a.
121		12.291	20087017.690	510226522.892	0.08	0.09	n.a.
122		12.363	265536371.041	2735365178.260	1.12	0.46	n.a.
123		12.448	15608951.834	515878399.140	0.07	0.09	n.a.
124		12.496	15817100.359	492969120.699	0.07	0.08	n.a.
125		12.530	12661347.549	307015173.948	0.05	0.05	n.a.
126		12.598	8623101.154	164288347.622	0.04	0.03	n.a.
127		12.666	14083922.887	224514279.630	0.06	0.04	n.a.
128		12.734	6155353.826	108488817.114	0.03	0.02	n.a.
129		12.842	1901577.174	53602668.658	0.01	0.01	n.a.
130		12.907	10549012.761	242892496.439	0.04	0.04	n.a.
131		12.978	118552339.817	2113597506.622	0.50	0.36	n.a.
132		13.033	54837598.073	1039801473.469	0.23	0.18	n.a.
133		13.104	50522795.067	839307452.352	0.21	0.14	n.a.
134		13.210	101436370.239	1658873648.029	0.43	0.28	n.a.
135		13.223	100716548.945	1596393895.574	0.42	0.27	n.a.
136		13.325	38749680.027	1298462817.746	0.16	0.22	n.a.
137		13.332	17772945.716	1318776657.324	0.07	0.22	n.a.
138		13.414	207087475.068	1891701873.177	0.87	0.32	n.a.
139		13.509	40264325.436	943195591.487	0.17	0.16	n.a.
140		13.533	47527665.592	997630708.907	0.20	0.17	n.a.
141		13.614	53054327.368	592568647.090	0.22	0.10	n.a.
142		13.757	20471901.844	256063280.479	0.09	0.04	n.a.
143		13.866	26120100.112	348085244.140	0.11	0.06	n.a.
144		14.002	391950963.487	7942879558.227	1.65	1.34	n.a.
145		14.043	688451493.329	10810055236.669	2.90	1.83	n.a.
146		14.087	242996056.282	11944691186.368	1.02	2.02	n.a.
147		14.131	420113704.203	12577853746.372	1.77	2.13	n.a.
148		14.155	473861392.478	12768481539.438	2.00	2.16	n.a.
149		14.169	424019441.414	12647165411.712	1.79	2.14	n.a.
150		14.213	282968765.750	12006225040.563	1.19	2.03	n.a.
151		14.244	338879006.033	11071486432.669	1.43	1.87	n.a.
152		14.274	347583836.340	11801908556.763	1.47	1.99	n.a.
153		14.298	310299159.030	11603576673.061	1.31	1.96	n.a.

154		14.332	296022477.274	10852815991.066	1.25	1.83	n.a.
155		14.342	215617190.717	10636746415.036	0.91	1.80	n.a.
156		14.366	379833849.374	10338608238.676	1.60	1.75	n.a.
157		14.424	305928087.983	12571236879.536	1.29	2.12	n.a.
158		14.485	36962429.868	1094934653.602	0.16	0.19	n.a.
159		14.536	22611524.981	671090296.033	0.10	0.11	n.a.
160		14.648	26608677.276	658188818.738	0.11	0.11	n.a.
161		14.720	6227344.238	180049886.789	0.03	0.03	n.a.
162		14.764	11560054.503	303885370.319	0.05	0.05	n.a.
163		14.863	33498510.135	718510475.876	0.14	0.12	n.a.
164		14.903	6321248.295	254422306.661	0.03	0.04	n.a.
165		14.992	77404817.322	1562349068.684	0.33	0.26	n.a.
166		15.118	157307862.311	3946918189.702	0.66	0.67	n.a.
167		15.155	294856948.116	5842976202.698	1.24	0.99	n.a.
168		15.206	106580.126	13009787.738	0.00	0.00	n.a.
169		15.264	26540892.834	521507181.729	0.11	0.09	n.a.
170		15.346	50665640.961	912374752.739	0.21	0.15	n.a.
171		15.461	121286767.520	2643256057.075	0.51	0.45	n.a.
172		15.597	52972882.583	804077163.420	0.22	0.14	n.a.
173		15.672	14745897.919	237441513.530	0.06	0.04	n.a.
174		15.818	11780255.645	178054640.477	0.05	0.03	n.a.
175		15.863	5996492.068	119446990.949	0.03	0.02	n.a.
176		15.937	3614038.918	88694613.574	0.02	0.01	n.a.
177		15.992	9122050.676	190739619.407	0.04	0.03	n.a.
178		16.084	9061026.166	155000552.930	0.04	0.03	n.a.
179		16.186	7023120.598	168961252.137	0.03	0.03	n.a.
180		16.244	13109160.185	228611776.912	0.06	0.04	n.a.
181		16.322	21183650.669	477574206.559	0.09	0.08	n.a.
182		16.397	31078612.315	691301938.946	0.13	0.12	n.a.
183		16.461	6510234.575	139606324.468	0.03	0.02	n.a.
184		16.546	6172072.900	117606942.064	0.03	0.02	n.a.
185		16.618	16806338.773	362047543.434	0.07	0.06	n.a.
186		16.774	3321144.201	63009291.876	0.01	0.01	n.a.
187		16.845	7827968.940	146178484.966	0.03	0.02	n.a.
188		16.917	3836191.468	69370420.404	0.02	0.01	n.a.
189		17.016	1936550.658	41904475.926	0.01	0.01	n.a.
190		17.084	8648778.397	187958825.699	0.04	0.03	n.a.
191		17.135	3472724.246	94084266.045	0.01	0.02	n.a.
192		17.189	6080136.759	143295088.603	0.03	0.02	n.a.
193		17.291	473439.450	13309474.412	0.00	0.00	n.a.
194		17.335	916889.045	18636242.588	0.00	0.00	n.a.
195		17.400	1158183.961	21123330.102	0.00	0.00	n.a.
196		17.475	1859192.802	29636386.195	0.01	0.01	n.a.
197		17.590	19009460.318	406671934.430	0.08	0.07	n.a.
198		17.669	585475.084	15290552.813	0.00	0.00	n.a.
199		17.788	3954335.250	82313997.336	0.02	0.01	n.a.
200		17.862	3446789.523	67919944.043	0.01	0.01	n.a.
201		17.927	1839196.997	41404282.611	0.01	0.01	n.a.
202		17.975	3158324.497	47330918.422	0.01	0.01	n.a.
203		18.080	368161.278	7489346.586	0.00	0.00	n.a.
204		18.175	1153607.275	28455578.590	0.00	0.00	n.a.
205		18.294	3033602.873	46650665.283	0.01	0.01	n.a.
206		18.379	251064.952	7742553.923	0.00	0.00	n.a.
207		18.495	5545980.259	77957293.700	0.02	0.01	n.a.
208		18.607	3407886.640	41113401.953	0.01	0.01	n.a.
209		18.767	1660306.630	33078609.030	0.01	0.01	n.a.
210		18.900	1121532.362	17174451.292	0.00	0.00	n.a.
211		18.961	223635.887	6788576.029	0.00	0.00	n.a.
212		19.080	3776185.183	64144647.539	0.02	0.01	n.a.
213		19.172	5967232.987	62652744.273	0.03	0.01	n.a.
214		19.383	178616.845	4967932.622	0.00	0.00	n.a.
215		19.471	884963.582	11735991.472	0.00	0.00	n.a.
216		19.590	1946167.247	39109060.619	0.01	0.01	n.a.
217		19.781	164264.481	7192157.134	0.00	0.00	n.a.
218		19.845	7932141.897	122193171.879	0.03	0.02	n.a.

219		20.015	2964593.925	26625297.867	0.01	0.00	n.a.
220		20.189	449326.023	7637824.931	0.00	0.00	n.a.
221		20.478	1219579.473	21556910.779	0.01	0.00	n.a.
222		20.566	1009702.448	12842643.385	0.00	0.00	n.a.
223		20.927	532527.203	9268263.050	0.00	0.00	n.a.
224		21.148	451786.956	9671273.311	0.00	0.00	n.a.
225		21.927	629902.243	11110157.592	0.00	0.00	n.a.
226		21.988	515855.136	9011568.905	0.00	0.00	n.a.
227		22.311	592437.653	13203706.868	0.00	0.00	n.a.
228		22.369	1244026.887	23505242.293	0.01	0.00	n.a.
229		22.427	2709802.795	39828108.286	0.01	0.01	n.a.
230		22.556	1948914.910	22399518.758	0.01	0.00	n.a.
231		22.655	26921416.395	509533981.430	0.11	0.09	n.a.
232		22.899	957782.891	13894078.024	0.00	0.00	n.a.
233		22.998	89385.881	3184729.790	0.00	0.00	n.a.
234		23.100	25450617.136	189191474.885	0.11	0.03	n.a.
235		23.185	430238.051	13356640.719	0.00	0.00	n.a.
236		23.345	958508.907	13175841.965	0.00	0.00	n.a.
237		25.178	608273.152	11884047.261	0.00	0.00	n.a.
238		25.845	5853547.056	22281856.892	0.02	0.00	n.a.
239		26.062	14903149.637	82262127.464	0.06	0.01	n.a.
240		26.471	27907819.727	77041465.617	0.12	0.01	n.a.
241		26.868	43181068.869	81267994.741	0.18	0.01	n.a.
Total:			23716737112.250	591712956020.517	100.00	100.00	

